

ROBOTICS

Product manual, spare parts

IRBP /D2009



Trace back information:
Workspace 22C version a9
Checked in 2022-09-28
Skribenta version 5.5.019

Product manual, spare parts

IRBP A -250/500/750

IRBP B -250/500/750

IRBP C -500/1000

IRBP D -300/600

IRBP K -300/600/1000

IRBP L -300/600/1000/2000/5000

IRBP R -300/600/1000

Document ID: 3HAC038416-001

Revision: L

The information in this manual is subject to change without notice and should not be construed as a commitment by ABB. ABB assumes no responsibility for any errors that may appear in this manual.

Except as may be expressly stated anywhere in this manual, nothing herein shall be construed as any kind of guarantee or warranty by ABB for losses, damage to persons or property, fitness for a specific purpose or the like.

In no event shall ABB be liable for incidental or consequential damages arising from use of this manual and products described herein.

This manual and parts thereof must not be reproduced or copied without ABB's written permission.

Keep for future reference.

Additional copies of this manual may be obtained from ABB.

Original instructions.

© Copyright 2010-2022 ABB. All rights reserved.
Specifications subject to change without notice.

Table of contents

Overview of this manual	7
1 Positioners	9
1.1 IRBP A	9
1.2 IRBP B	10
1.3 IRBP C	12
1.4 IRBP D	13
1.5 IRBP K	14
1.6 IRBP L	15
1.7 IRBP R	16
2 Rotary units and supports	19
2.1 MTD 250	19
2.2 MTD 500/750	24
2.3 MTD 2000	29
2.4 MTD 5000	34
2.5 MID 1.1	39
2.6 MID 1.2	41
2.7 MID 2.1	43
2.8 Support collar	45
2.9 Stop lug	47
3 Motor units	49
3.1 Motor units for MTD 250	49
3.2 Motor unit for MTD 500-750	52
3.3 Motor units for MTD 2000	55
3.4 Motor units for MTD 5000	58
3.5 Motor unit for MID 1.2	61
3.6 Motor unit for MID 2.1-2.2	64
4 Electrical spare parts	67
4.1 External connectors	67
4.1.1 Spare parts, cables	67
4.2 Internal connectors	69
4.2.1 Spare parts, connectors in manipulator	69
4.2.2 Spare part, SMB box	77
4.3 Electrical options	79
4.3.1 SIB V , spare parts	79
4.3.2 Spare parts, SIB V option board 1 and 2	81
4.3.3 Spare parts, manual jog L/K/R	82
4.3.4 Spare parts station sync	83
4.3.5 Spare parts, active relay supervision	84
5 Controller	85
5.1 Spare parts, controller IRBP	85
6 Safety equipment	93
6.1 Spare parts, light beam	93

This page is intentionally left blank

Overview of this manual

About this manual

This manual contains information on all the spare parts for positioner IRBP A, B, C, D, K, R, and L presented in *Product manual - IRBP /D2009*.

Usage

This manual should be used as a complement to the product manual during:

- maintenance work
- repair work.

Who should read this manual?

This manual is intended for:

- maintenance personnel
- repair personnel.

Prerequisites

A maintenance/repair technician working with an ABB manipulator must:

- be trained by ABB and have the required knowledge of mechanical and electrical installation/repair/maintenance work.

Organization of chapters

The manual is organized in the following chapters:

Chapter	Contents
1	Frame parts
2	Rotary units and supports
3	Motor units
4	Electrical spare parts
5	Controller
6	Safety equipment

References

Reference	Document ID
<i>Product manual - IRBP /D2009</i>	3HAC037731-001

Revisions

Revision	Description
-	First edition
A	This revision includes the following additions and/or changes: <ul style="list-style-type: none"> • Added IRBP C in IRBP C on page 12.
B	This revision includes the following additions and/or changes: <ul style="list-style-type: none"> • Structural modification of chapter 1, and references to the components.

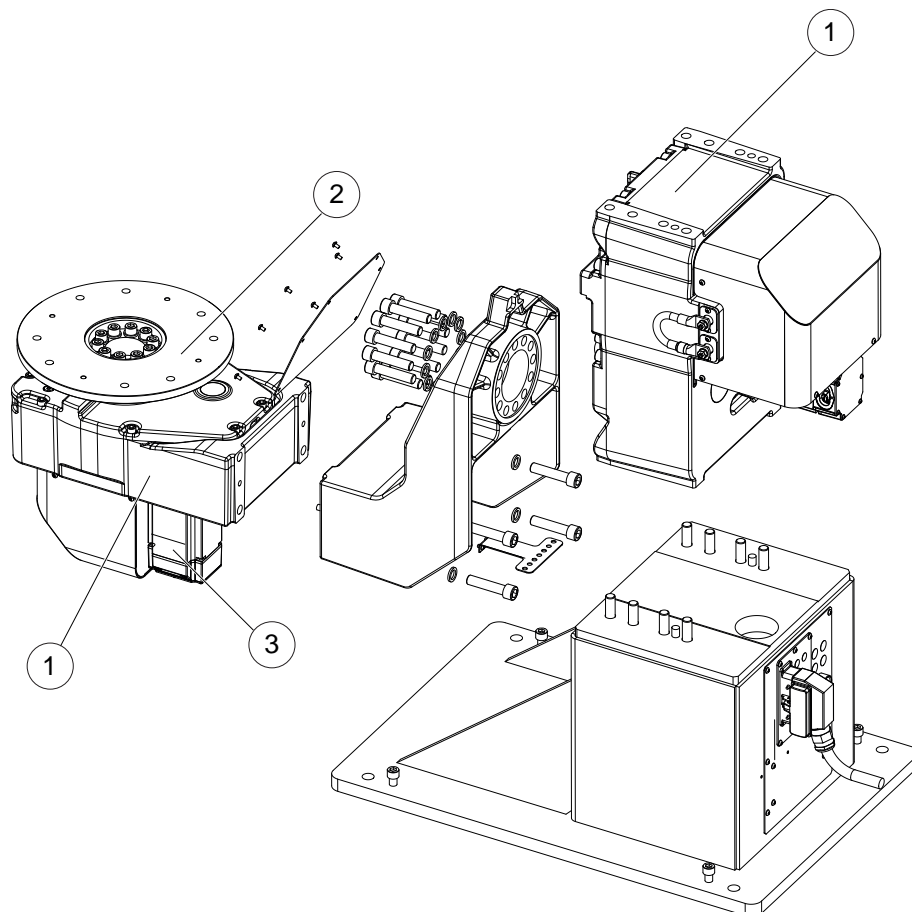
Continues on next page

Revision	Description
C	This revision includes the following additions and/or changes: <ul style="list-style-type: none">• Article number changed for grease in MTD 250, see Rotary units and supports on page 19.• Part number for Graphite white spare parts added.
D	This revision includes the following additions and/or changes: <ul style="list-style-type: none">• Page 3, model designation updated for model K and R• Figures and tables updated for IRBP B and IRBP R, MID unit added.• Added that lifting eyes no longer is delivered with the IRBP:s.• Added new spare part numbers for gearboxes and motors, valid from these serial numbers, onwards: SEROP POF-110001- and CNAUS POF-510001-
E	This revision includes the following additions and/or changes: <ul style="list-style-type: none">• Description for spare part 3HAC035881-001/002 is changed from <i>Cable WCS1/WCS2</i> to <i>Cable slipring WCS3/WCS4</i>.• Number for insulation kit for MTD 500, 750 and 2000 is changed to 3HAC032214-002.
F	This revision includes the following additions and/or changes: <ul style="list-style-type: none">• Replaced spare part number for motor unit MTD 500-750, orange (is 3HAC038210-014, was 3HAC038187-014).
G	Published in release R17.2. The following updates are made in this revision: <ul style="list-style-type: none">• Spare part number for seal and isolation kit for motor units MTD 500-750 and MTD 2000 is changed to 3HAC038214-002.• Spare part list for SMB box 3HAC046493-001 updated.
H	Published in release 19B. The following updates are made in this revision: <ul style="list-style-type: none">• New article numbers for manipulator cables in section Spare parts, cables on page 67.
J	Published in release 20A. The following updates are made in this revision: <ul style="list-style-type: none">• Added item 45 (washer) to spare part lists for the rotary units MTD 250 and MTD 500.
K	Published in release 20D. The following updates are made in this revision: <ul style="list-style-type: none">• Spare part numbers for gearboxes MTD 500 and MTD 750 are updated.
L	Published in release 22C. The following updates are made in this revision: <ul style="list-style-type: none">• Color of spare part number 3HAC035436-003 changed to ABB Orange.

1 Positioners

1.1 IRBP A

Frame parts



xx100000187

Pos	Part	Spare part
1	Gearbox	MTD 250, see MTD 250 on page 19 MTD 500/750, see MTD 500/750 on page 24
2	Rotary disc	MTD 250, see MTD 250 on page 19 MTD 500/750, see MTD 500/750 on page 24
3	Motor unit	MTD 250, see Motor units for MTD 250 on page 49 MTD 500/750, see Motor unit for MTD 500-750 on page 52



Note

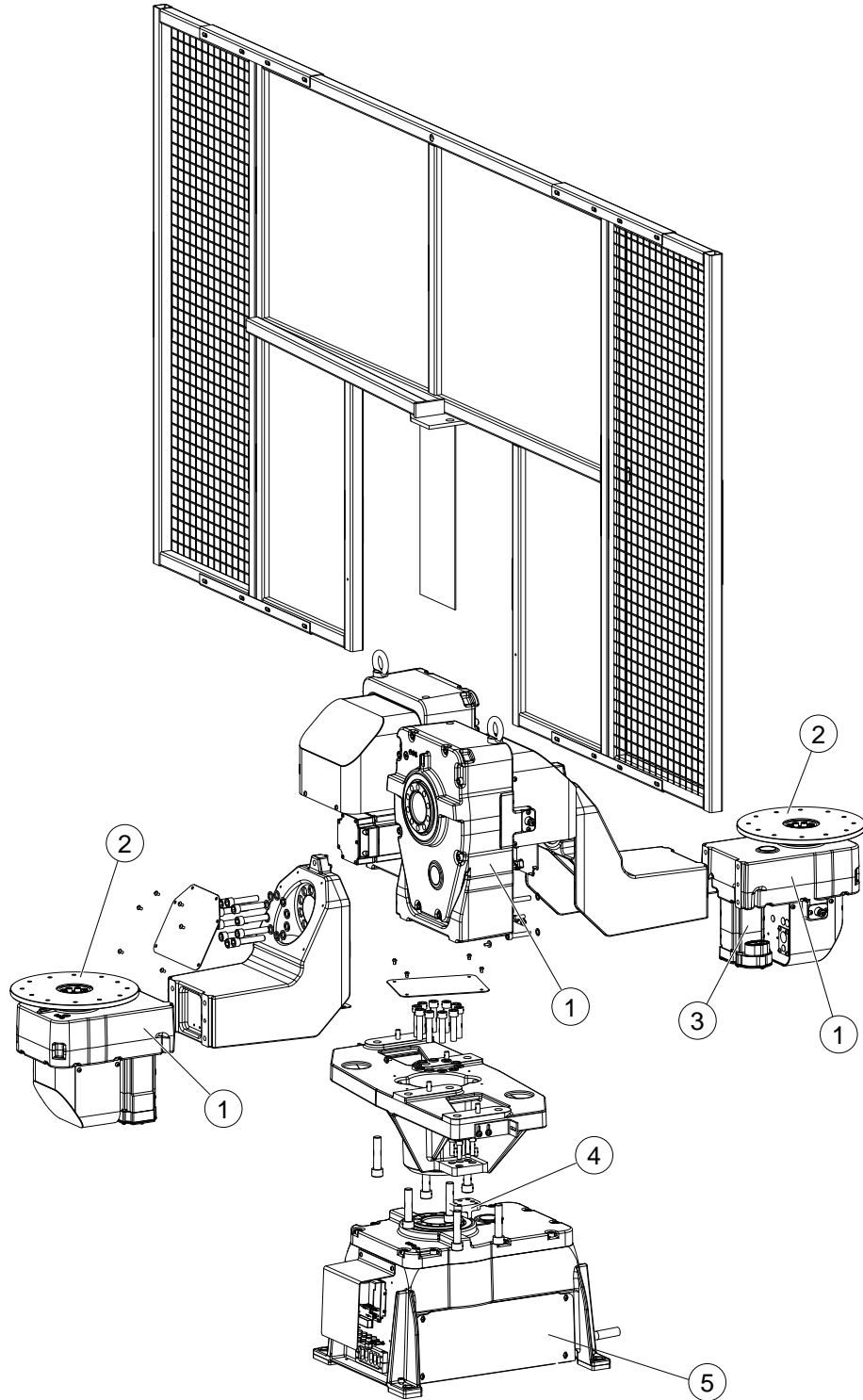
Lifting eyes are not delivered with the IRBP.

1 Positioners

1.2 IRBP B

1.2 IRBP B

Frame parts



xx100000190

Continues on next page

Pos	Part	Spare part
1	Gearbox	MTD 200, see MTD 250 on page 19 MTD 500/750, see MTD 500/750 on page 24
2	Rotary disc	MTD 200, see MTD 250 on page 19 MTD 500/750, see MTD 500/750 on page 24
3	Motor units	See Motor units on page 49
4	Stop lug	See Stop lug on page 47
5	Rotary unit	250 MID 1.1, see MID 1.1 on page 39 500/750 MID 2.1, see MID 2.1 on page 43



Note

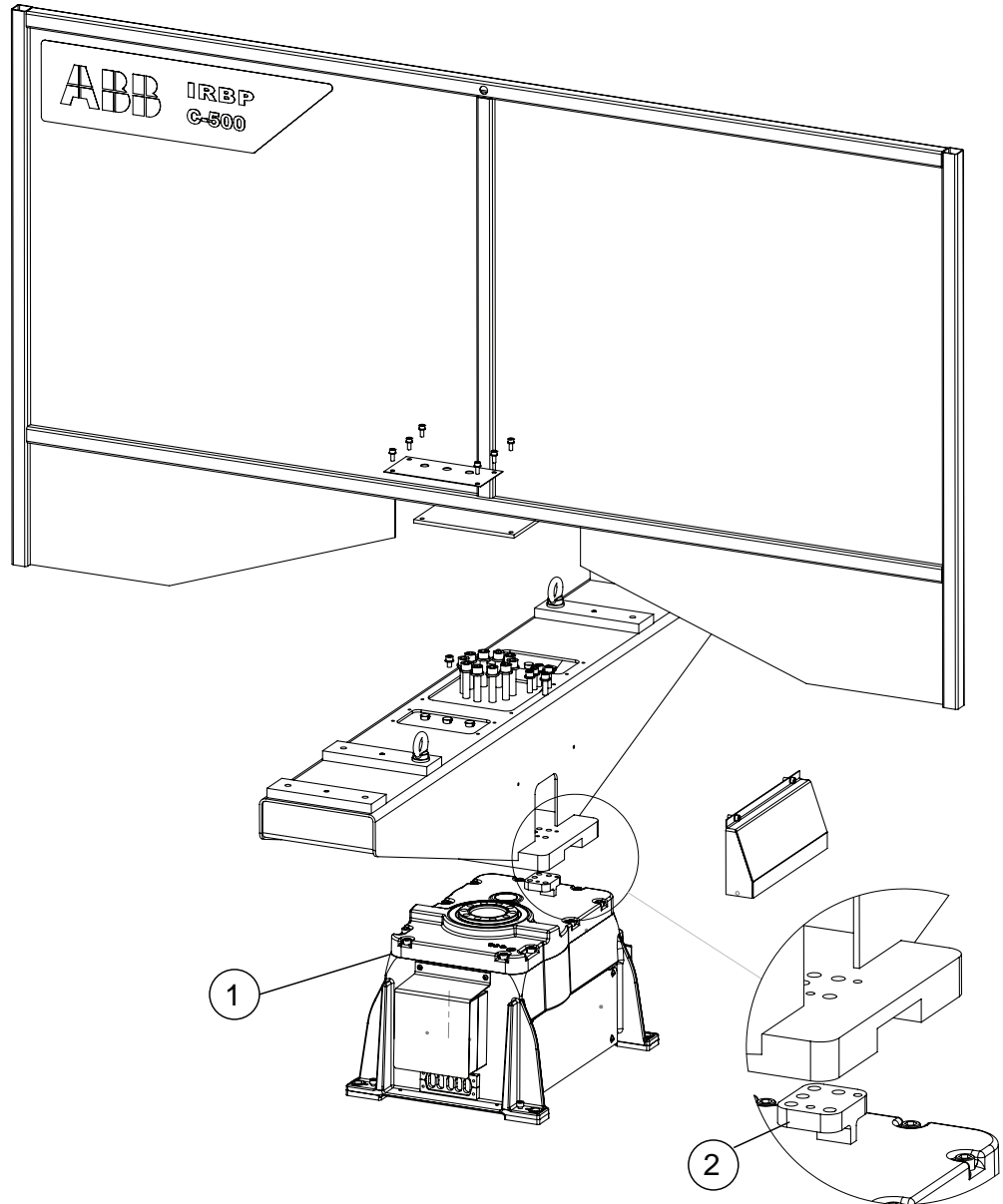
Lifting eyes are not delivered with the IRBP.

1 Positioners

1.3 IRBP C

1.3 IRBP C

Frame parts



xx130000002

Pos	Part	Spare part
1	Rotary unit	500, MID 1.1, see MID 1.1 on page 39 1000, MID 2.1, see Motor unit for MID 2.1-2.2 on page 64
2	Stop lug	See Stop lug on page 47

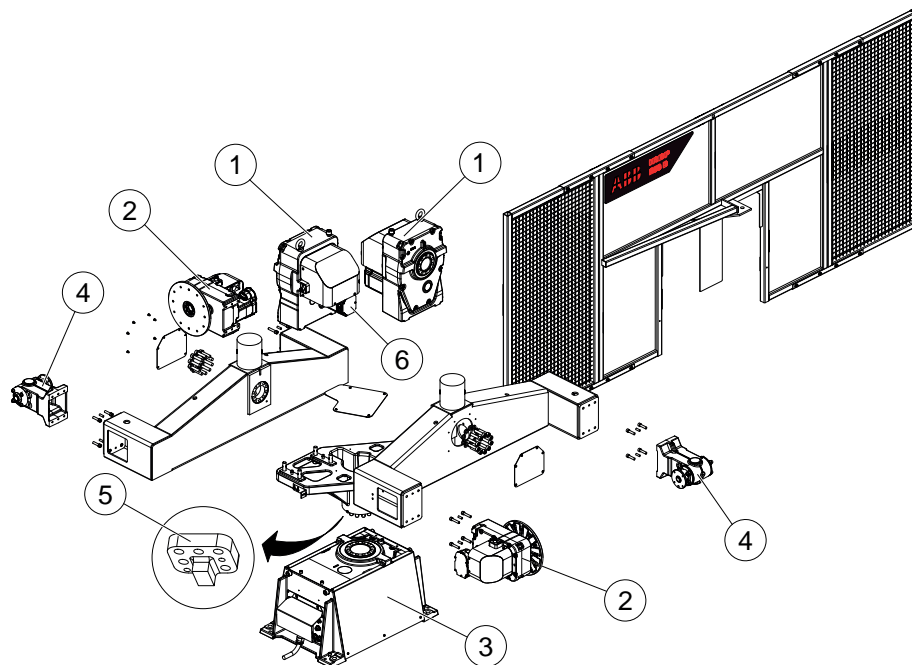


Note

Lifting eyes are not delivered with the IRBP.

1.4 IRBP D

Frame parts



xx100000185

Pos	Part	Spare part
1	Rotary unit	MID 1.2, see MID 1.2 on page 41
2	Rotary unit	300, (MTD 250), see MTD 250 on page 19 600, (MTD 500/750), See MTD 500/750 on page 24
3	Rotary unit	MID 2.1-2.2, see MID 2.1 on page 43
4	Support collar	See Support collar on page 45
5	Stop lug	See Stop lug on page 47
6	Motor unit	300, (MTD 250), see Motor units for MTD 250 on page 49 600, (MTD 500/750, see Motor unit for MTD 500-750 on page 52

**Note**

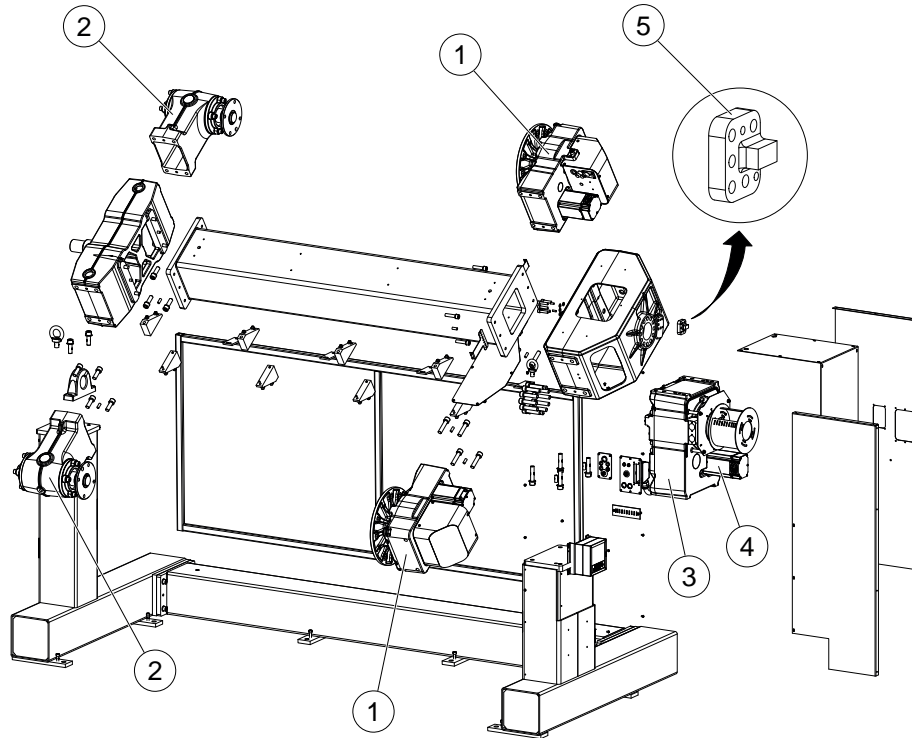
Lifting eyes are not delivered with the IRBP.

1 Positioners

1.5 IRBP K

1.5 IRBP K

Frame parts



xx100000184

Pos	Part	Spare part
1	Rotary unit	300, (MTD 250), see MTD 250 on page 19 600, (MTD 500/750), see MTD 500/750 on page 24 1000, (MTD 500/750), see MTD 500/750 on page 24
2	Support collar	See Support collar on page 45
3	Rotary unit	MID 1.2, see MID 1.2 on page 41
4	Motor unit	300, (MTD 250), see Motor units for MTD 250 on page 49 600, (MTD 500/750, see Motor unit for MTD 500-750 on page 52 1000, (MTD 500/750, see Motor unit for MTD 500-750 on page 52
5	Stop lug	See Stop lug on page 47

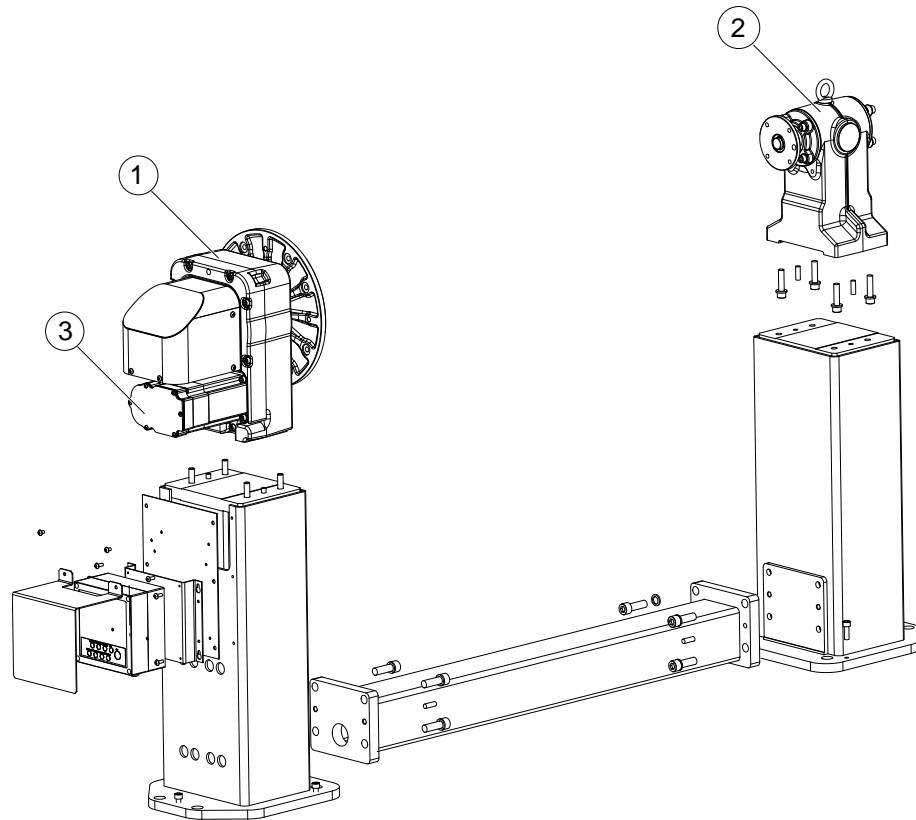


Note

Lifting eyes are not delivered with the IRBP.

1.6 IRBP L

Frame parts



xx100000188

Pos	Part	Spare part
1	Rotary unit	300, (MTD 250), see MTD 250 on page 19 600, (MTD 500)/750), see MTD 500/750 on page 24 1000, (MTD 500)/750), see MTD 500/750 on page 24 2000, (MTD 2000), see MTD 2000 on page 29 5000, (MTD 5000), see MTD 5000 on page 34
2	Support collar	See Support collar on page 45
3	Motor unit	300, (MTD 250), see Motor units for MTD 250 on page 49 600, (MTD 500/750), see Motor unit for MTD 500-750 on page 52 1000, (MTD 500/750), see Motor unit for MTD 500-750 on page 52 2000, (MTD 2000), see Motor units for MTD 2000 on page 55 5000, (MTD 5000), see Motor units for MTD 5000 on page 58

**Note**

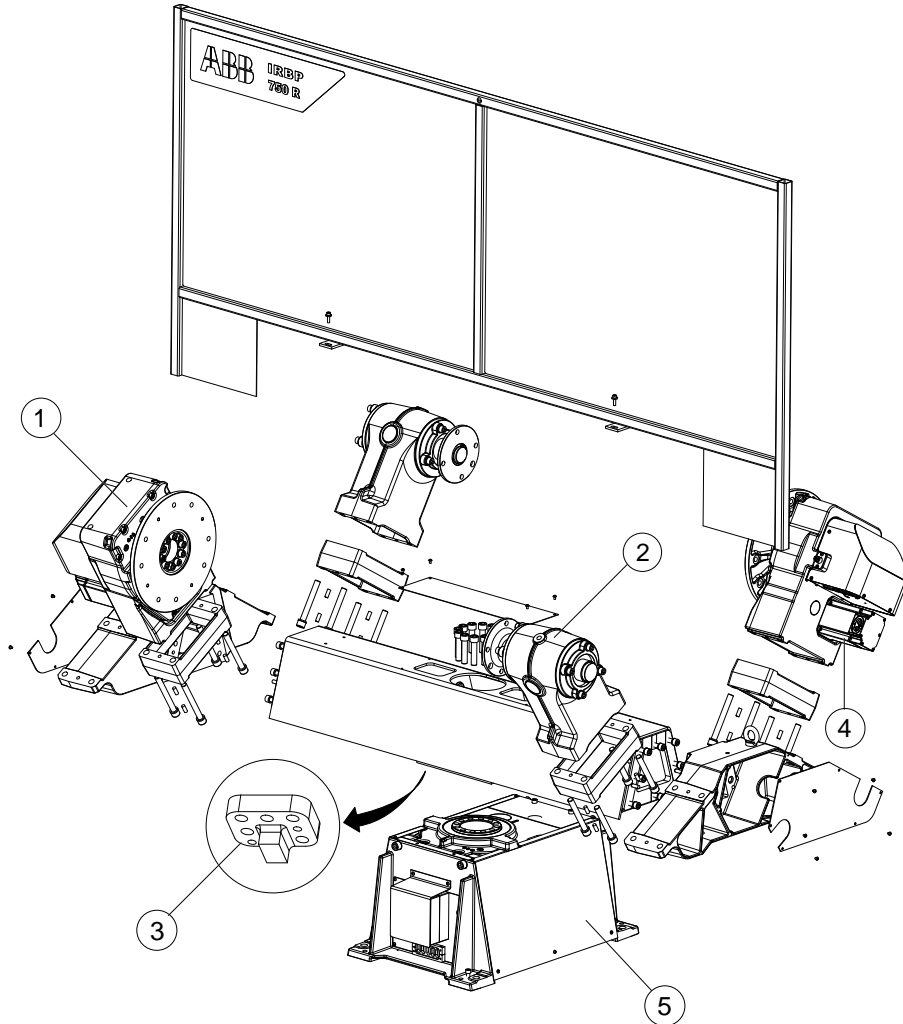
Lifting eyes are not delivered with the IRBP.

1 Positioners

1.7 IRBP R

1.7 IRBP R

Frame parts



xx100000194

Pos	Parts	Spare part
1	Rotary unit	300, (MTD 250), see MTD 250 on page 19 600, (MTD 500/750), see MTD 500/750 on page 24 1000, (MTD 500/750), see MTD 500/750 on page 24
2	Support collar	See Support collar on page 45
3	Stop lug	See Stop lug on page 47
4	Motor unit	300, (MTD 250), see Motor units for MTD 250 on page 49 600, (MTD 500/750, see Motor unit for MTD 500-750 on page 52 1000, (MTD 500/750, see Motor unit for MTD 500-750 on page 52
5	Rotary unit	300, MID1.1, see MID 1.1 on page 39 600, MID 2.1, see MID 2.1 on page 43 1000, MID 2.1, see MID 2.1 on page 43

Continues on next page



Note

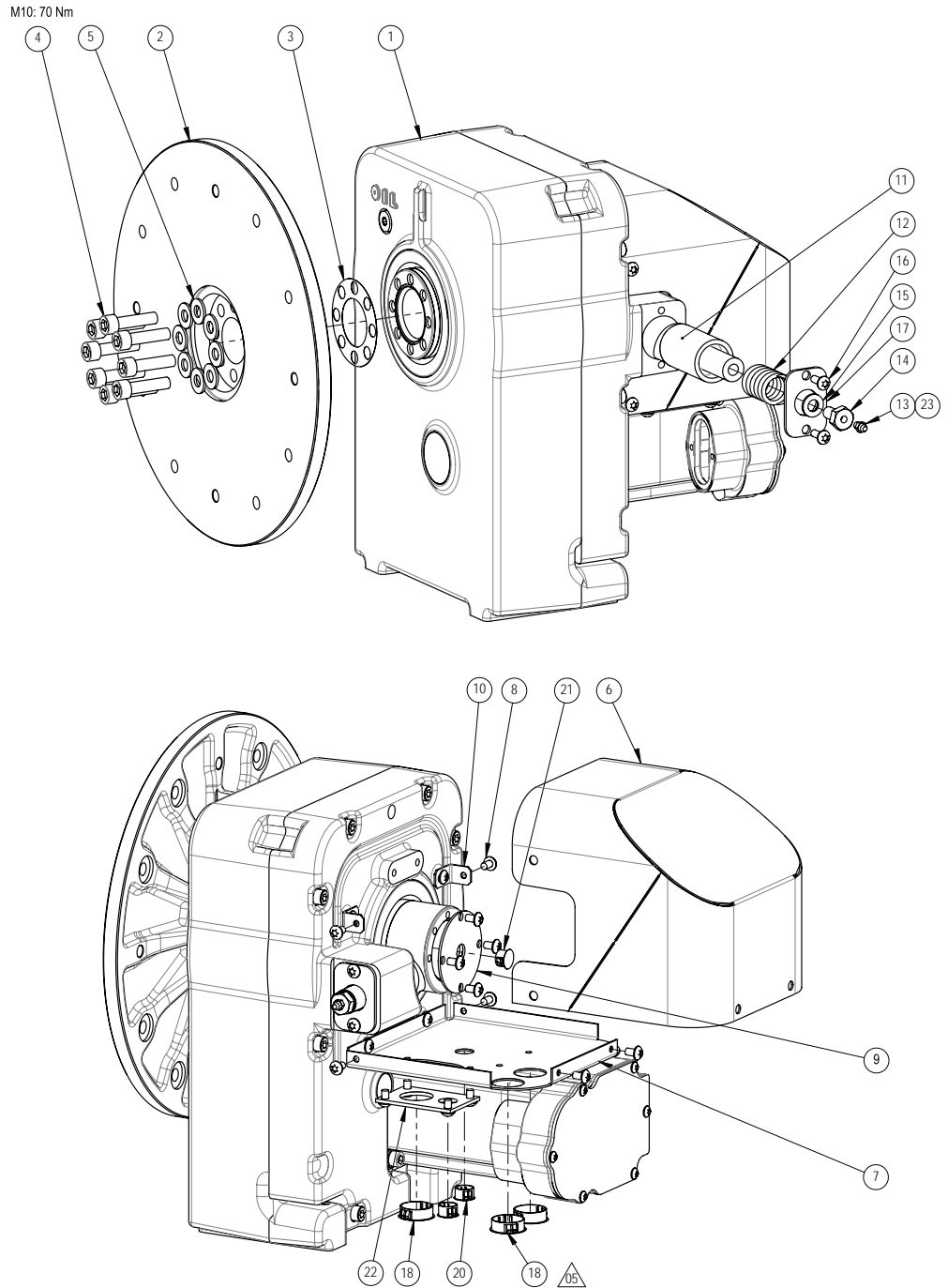
Lifting eyes are not delivered with the IRBP.

This page is intentionally left blank

2 Rotary units and supports

2.1 MTD 250

Rotary unit MTD 250



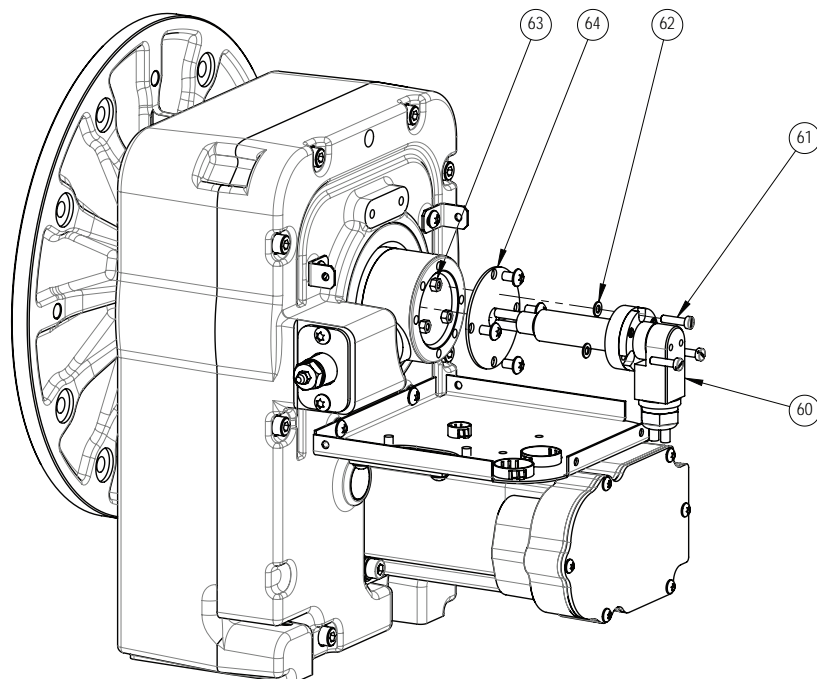
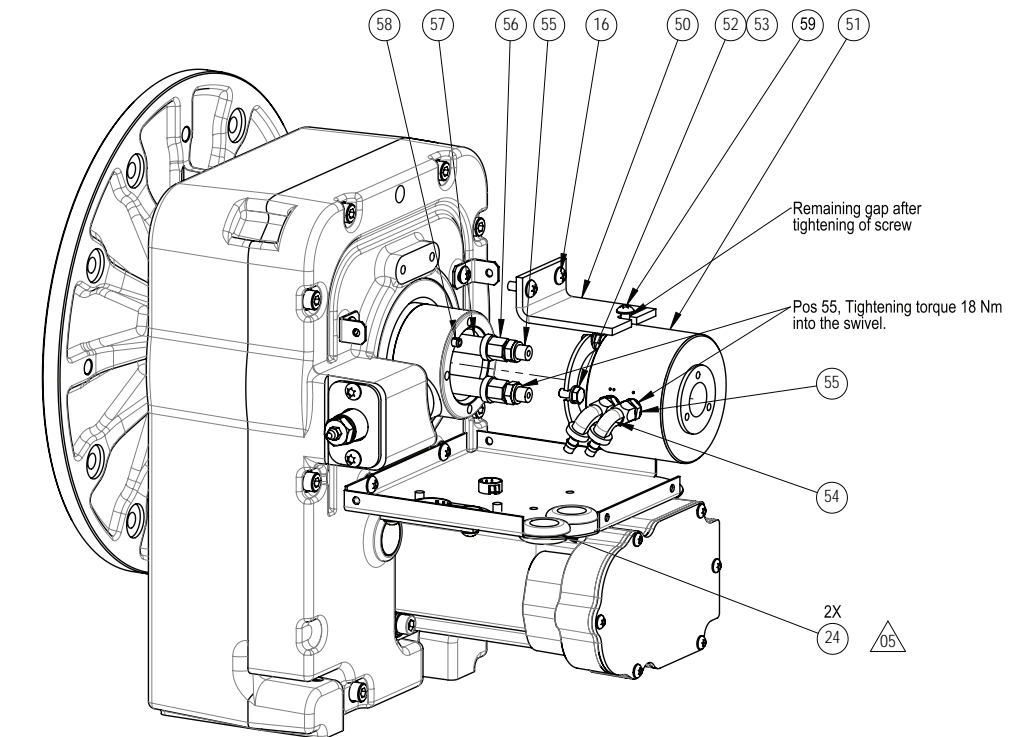
xx100000160

Continues on next page

2 Rotary units and supports

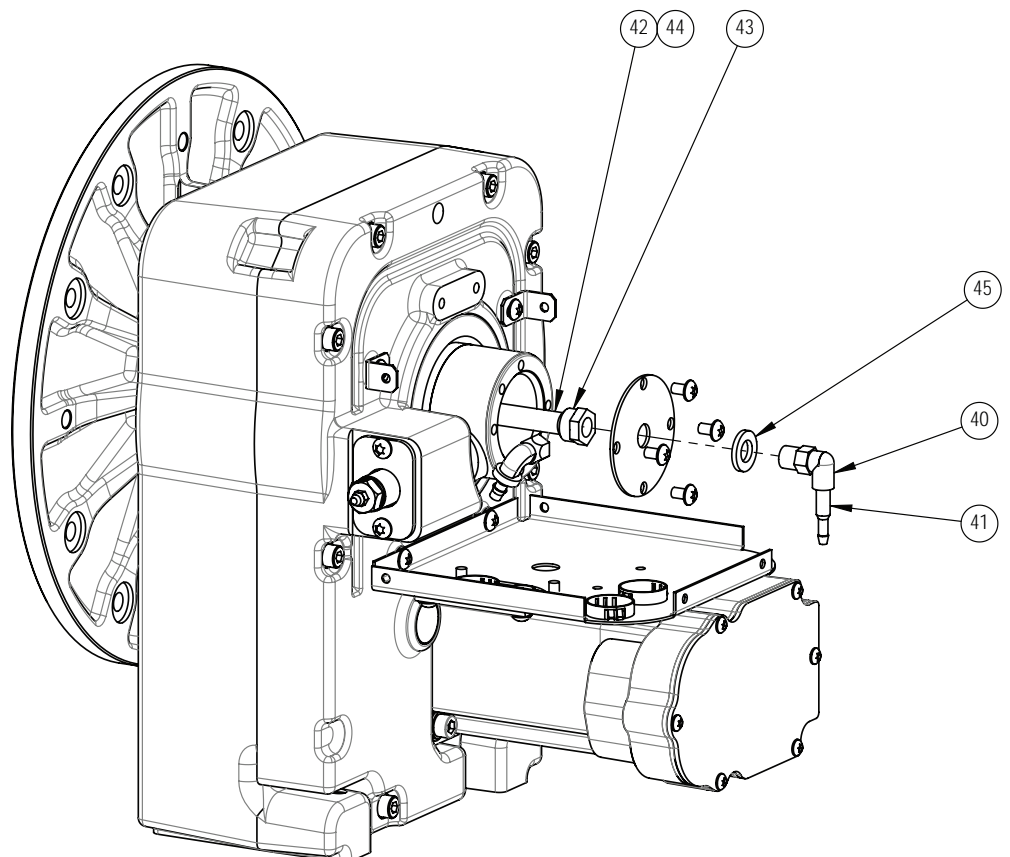
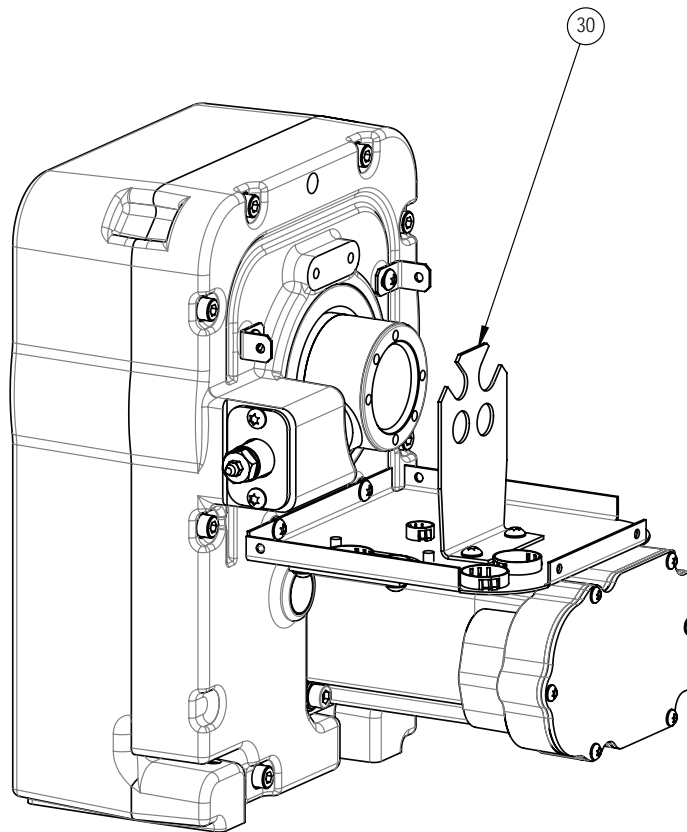
2.1 MTD 250

Continued



xx100000161

Continues on next page



Continues on next page

2 Rotary units and supports

2.1 MTD 250

Continued

xx100000162

Components valid from these serial numbers, onwards:

SEROP: POF-110001 -

CNAUS: POF-510001 -



Note

Before ordering these components, make sure that they match the serial number of the IRBP.

Item	Component	Description	Qty	Material, type, etc.	Dimension
1	3HAC048683-001	Gearbox MTD 250, incl motor	1	Graphite White	
1	3HAC048683-002	Gearbox MTD 250, incl motor	1	ABB Orange	
6	3HAC052131-001	Cover MTD 250	1	Graphite White	
6	3HAC034827-001	Cover MTD 250	1	ABB Orange	

Components valid up to these serial numbers:

SEROP: - POF-110000

CNAUS: - POF-510000



Note

Before ordering these components, make sure that they match the serial number of the IRBP.

Item	Component	Description	Qty	Material, type, etc.	Dimension
1	3HAC035434-003	Gearbox MTD 250, incl motor	1	ABB Orange	
6	3HAC034827-001	Cover MTD 250	1	ABB Orange	

Components valid for all serial numbers



Note

These components are valid for all serial numbers of the IRBP.

Item	Component	Description	Qty	Material, type, etc.	Dimension
2	3HAC032817-001	Rotary disc MTD 250	1		
3	3HAC035527-001	Friction shim	1		
4	3HAB7700-2	Hex socket head cap screw	8		
5	3HAC028304-003	Washer 10.5/22	8		10.5 x 22 T=2
6	3HAC034827-001	Cover MTD 250	1	ABB Orange	
6	3HAC052131-001	Cover MTD 250	1	Graphite White	
7	3HAC034870-001	Bottom sheet MTD 250	1	ABB Orange	
7	3HAC050219-001	Bottom sheet MTD 250		Graphite White	
8	9ADA629-54	Torx pan head roll. screw	18		

Continues on next page

2 Rotary units and supports

2.1 MTD 250

Continued

Item	Component	Description	Qty	Material, type, etc.	Dimension
9	503839001	Cover MTC 250	1		
10	503861001	Bracket	1		
11	503852001	Contact bar 250	1		
12	418554002	Spring 3x22x45	1		3X22X4
13	25452021-21	Lubricating nipple	1		AH M6
14	503880001	Screw, Current Collector	1		
15	9ADA312-8	Plain washer, DIN 125	1		
16	9ADA629-56	Torx pan head roll. screw	2		
17	3HAC051738-001	Washer MTC	1	ABB Orange	
17	503857001	Washer MTC		Graphite White	
18	3HAC029662-006	Blind Plug	1		D=28
19	3HAC029662-003	Blind Plug	2		D=19
20	3HAC029662-002	Blind Plug	2		D=16
21	3HAC029662-001	Blind Plug	1		D=14
22	3HAC036336-001	Insulated connection plate	1		
23	0501869002	Special grease type P 34	5		
40	501728007	ROTATING COUPLING	1		
41	192200103	Hose Nipple	1		1/4" D4.25-4.4"
42	504478001	Hose 1/4	1		
43	503882001	NIPPEL 1/4	1		
44	193761002	HOSE CLAMP	1		D 13/7
45	3HAC028304-004	Washer 13/24	1		13 x 24 T=3
50	503871001	Bar MTC 250	1		
51	503875880	SWIVEL	1	2-CH	DIAM. 45
54	504474001	Elbow Coupling M12X1.5	2	Steel-A2F	90 degrees
55	504476001	Coupling	4		M10X1
56	504477001	NIPPEL 1/4	2		M12X1.5
57	504478001	Hose 1/4	2		
58	9ABA142-57	Spring pin, slotted	2	Steel	6x16
60	3HAC032972-002	Slip ring capsule	1		
61	3HAC033459-002	Screw	3	Polyamide	M5x20
62	3HAC033458-001	Washer	3	Polyamide	5.3x10x1
64	503883001	Cover elec. Swivel MTC 250			

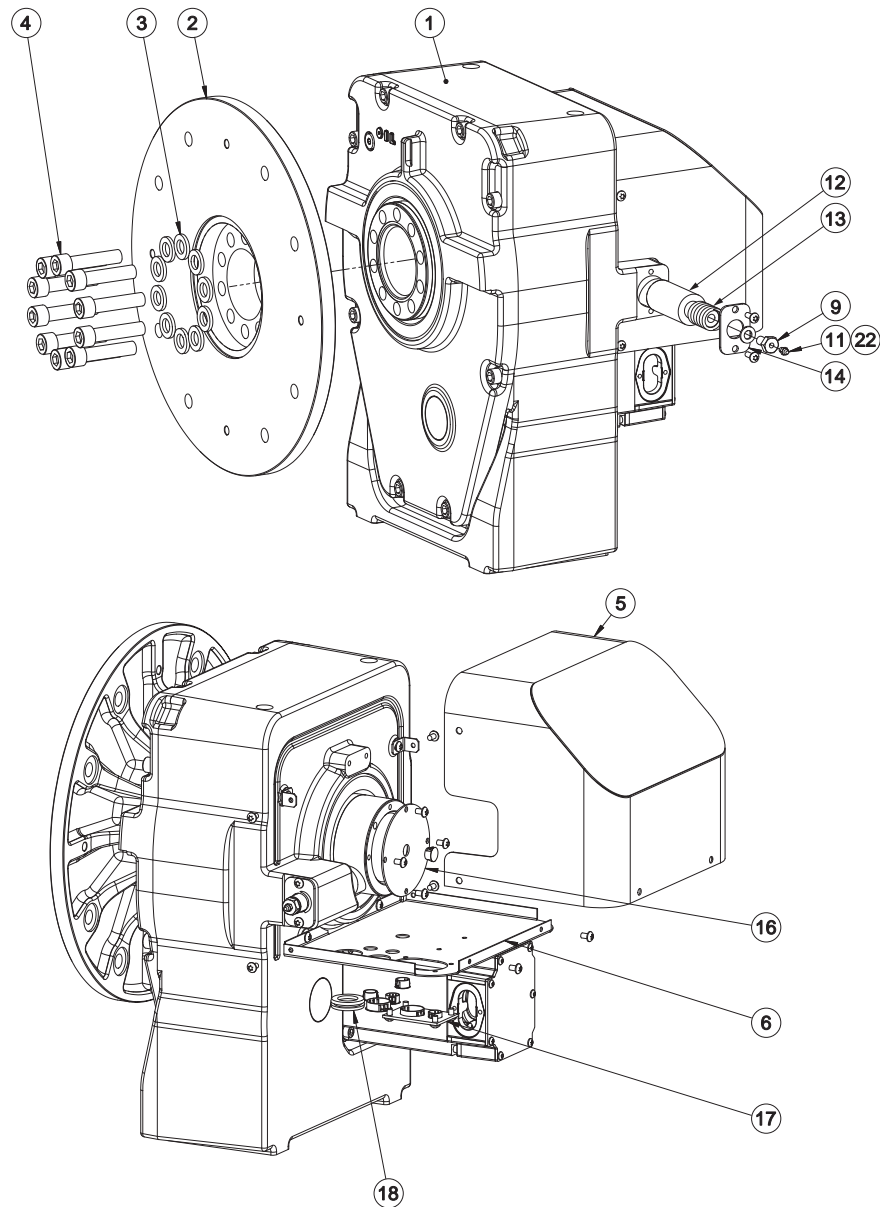
2 Rotary units and supports

2.2 MTD 500/750

2.2 MTD 500/750

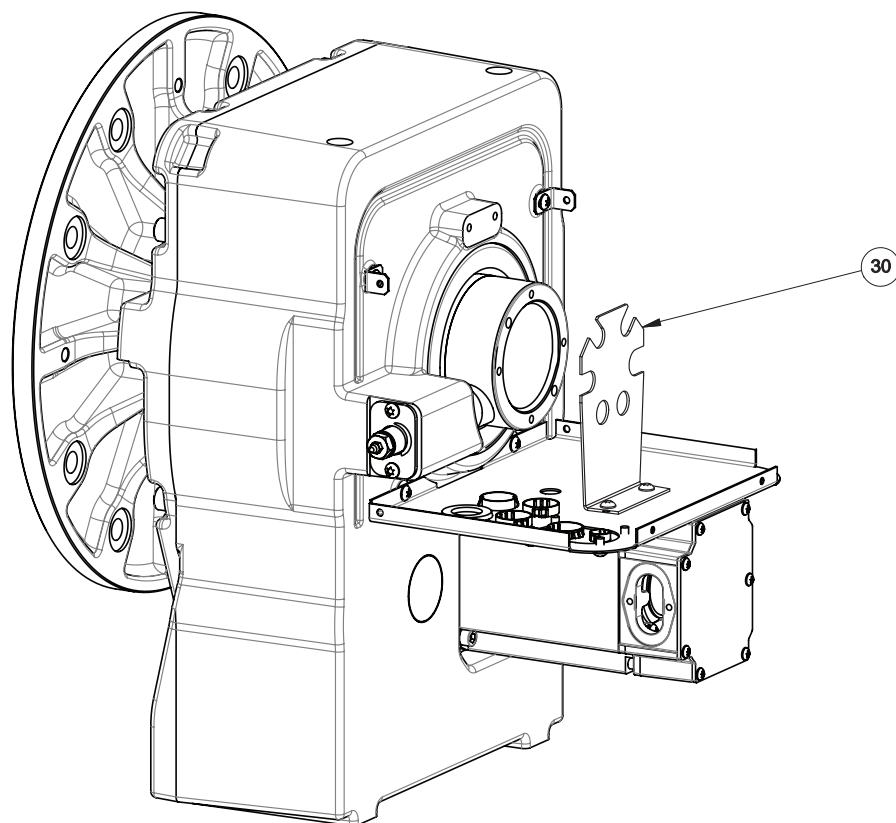
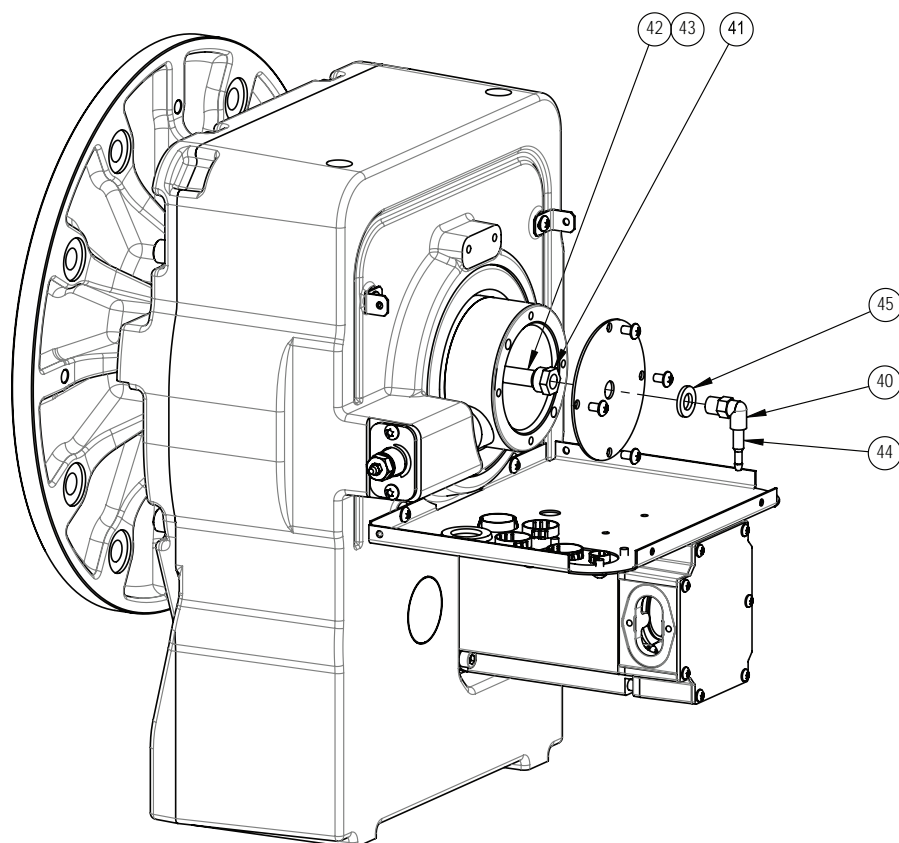
Rotary unit MTD 500/750

M16 12.9: 300 Nm



xx100000164

Continues on next page



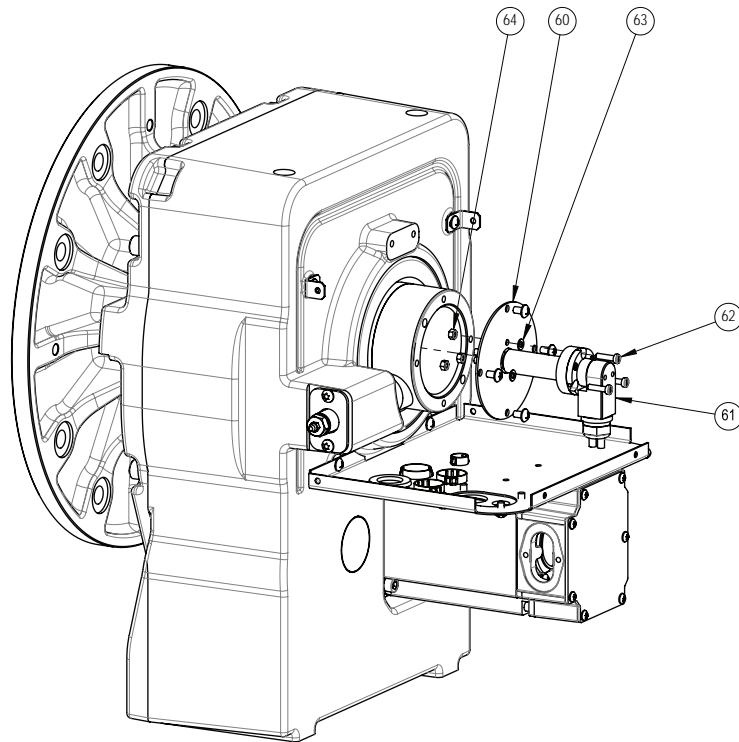
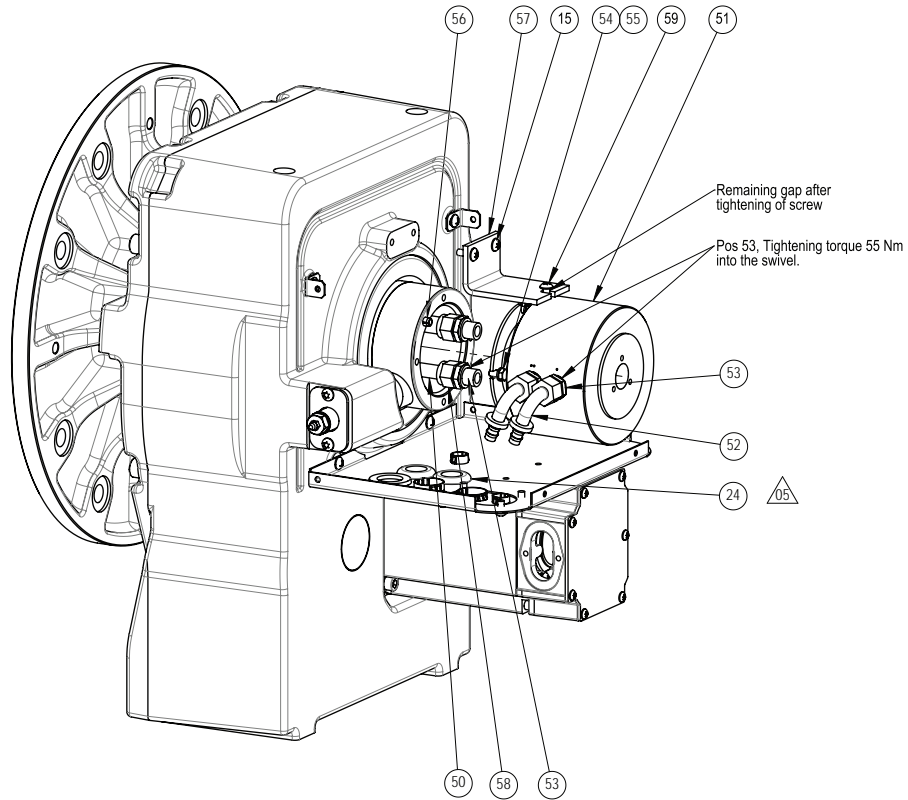
Continues on next page

2 Rotary units and supports

2.2 MTD 500/750

Continued

xx100000165



xx100000166

Components valid from these serial numbers, onwards:

SEROP: POF-110001 -

Continues on next page

CNAUS: POF-510001 -

**Note**

Before ordering these components, make sure that they match the serial number of the IRBP.

Item	Component	Description	Qty	Material, type, etc.	Dimension
1	3HAC035436-003	Gearbox MTD 500, incl motor	1	ABB Orange	
1	3HAC076879-005	Gearbox MTD 500, incl motor	1	Graphite White	
1	3HAC076879-006	Gearbox MTD 500, incl motor	1	ABB Orange	
1	3HAC035398-004	Gearbox MTD 750, incl motor	1	ABB Orange	
1	3HAC076880-004	Gearbox MTD 750, incl motor	1	Graphite White	
1	3HAC076880-005	Gearbox MTD 750, incl motor	1	ABB Orange	
5	3HAC050288-001	Cover MTD 500/750	1	Graphite White	
5	3HAC036974-001	Cover MTD 500/750	1	ABB Orange	

Components valid up to these serial numbers:

SEROP: - POF-110000

CNAUS: - POF-510000

**Note**

Before ordering these components, make sure that they match the serial number of the IRBP.

Item	Component	Description	Qty	Material, type, etc.	Dimension
1	3HAC035436-002	Gearbox MTD 500, incl motor	1	ABB Orange	
1	3HAC035398-004	Gearbox MTD 750, incl motor	1	ABB Orange	
6	3HAC036974-001	Cover MTD 500/750	1	ABB Orange	

Components valid for all serial numbers

**Note**

These components are valid for all serial numbers of the IRBP.

Item	Component	Description	Qty	Material, type, etc.	Dimension
2	3HAC032819-001	Rotary disc MTD 750	1		
3	3HAC028304-005	Washer 17/30	10		17 x 30 T=4
4	3HAB7700-5	Hex socket head cap screw	10	UNBRAKO 12.9 GI 610	M16x70
6	3HAC036350-001	Bottom sheet MTD 500/750	1		
9	503880001	Screw, Current Collector	1		
10	9ADA312-8	Plain washer	1		DIN 125
11	25452021-21	Lubricating nipple	1		AH M6

Continues on next page

2 Rotary units and supports

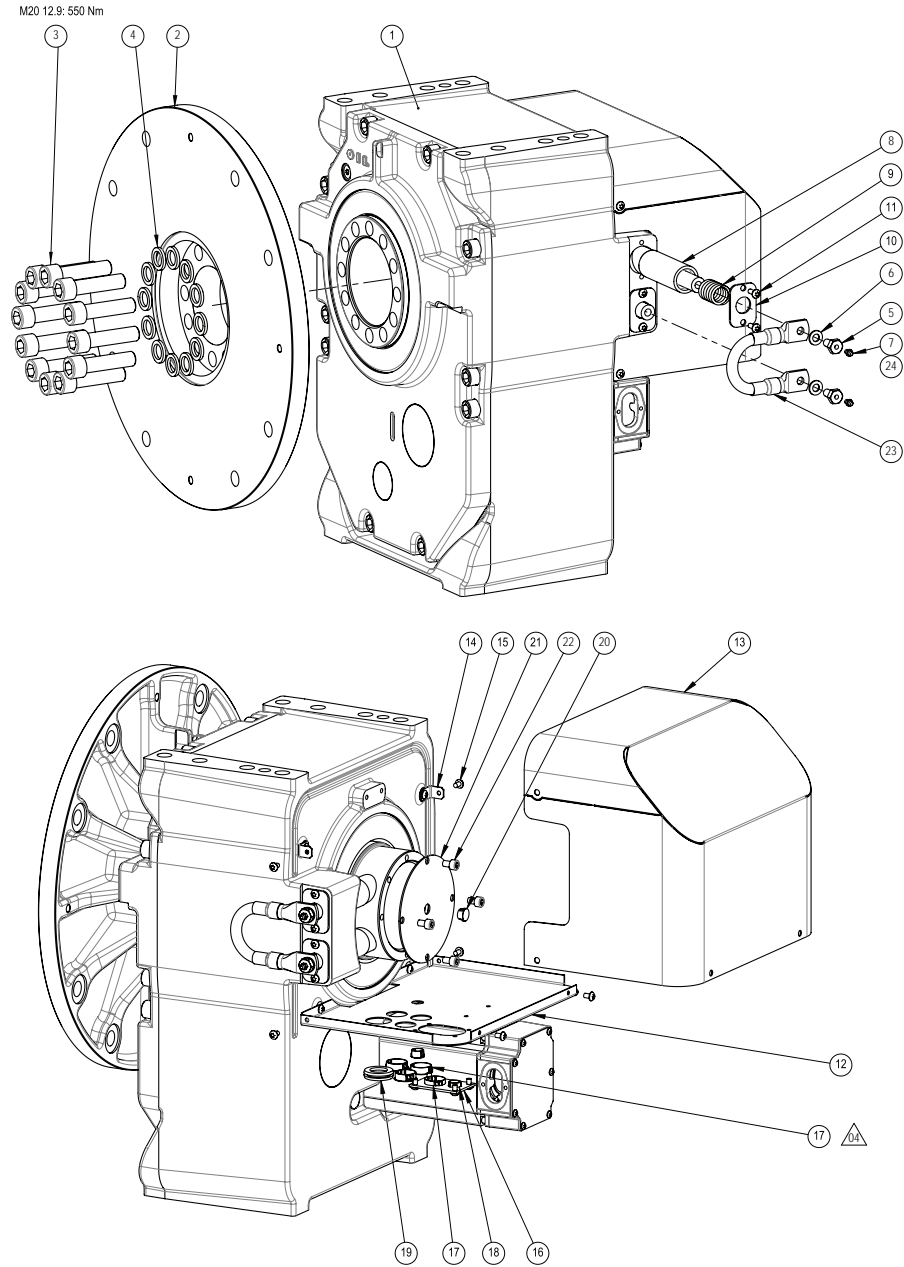
2.2 MTD 500/750

Continued

Item	Component	Description	Qty	Material, type, etc.	Dimension
12	503853001	Contact Bar 500/750	1	MTC 500/750	
13	418554002	Spring	1		Spring 3x22x4
14	503857001	Washer MTC	1		
15	9ADA618-56	Torx pan head screw	2		
16	503839002	Cover MTC 500/750	1		
17	3HAC036336-001	Insulated connection plate	1		
18	504189010	Shelter plug	1		D= 32X40/3
19	3HAC029662-006	Blind Plug	2		D=28
20	3HAC029662-002	Blind Plug	4		D=16
21	3HAC029662-001	Blind Plug	1		D=14
22	0501869002	Special grease type P 34	5		
30	3HAC036352-001	Cable bracket MTD 500/750	1		
40	501728007	ROTATING COUPLING	1		
41	503882001	NIPPEL 1/4	1		
42	504478001	Hose 1/4	1		
43	193761002	HOSE CLAMP	1		D 13/7
44	192200103	Hose Nipple	1		1/4", D4.25-4.4"
45	3HAC028304-004	Washer 13/24 MTD 500	1		13 x 24 T=3
50	504478002	Hose 3/8	2		
51	503876880	Swivel 2-K	1	D 75	
52	504475003	Nipple 90deg.	2		M18X1.5
53	504476003	Coupling	4		M16X1.5
54	9ADA120-20	Hexagon head screw	4		
55	9ADA312-6	Plain washer	4		
56	9ABA142-73	Spring-Type Straight Pins 8x16	2		D8x16
57	503889001	Bar MTC 750	1		
58	504477003	Hose Nipple 3/8 M18X1.5	2		
59	9ADA629-57	Torx pan head roll. screw	1		
60	503883002	Cover elec. Swivel MTC 750	1		
61	3HAC032972-002	Slip ring capsule	1		
62	3HAC033459-002	Screw	3	Polyamide	M5x20
63	3HAC033458-001	Washer	3	Polyamide	5.3x10x1
64	9ADA267-5	Hexagon nut	3		

2.3 MTD 2000

Rotary unit MTD 2000



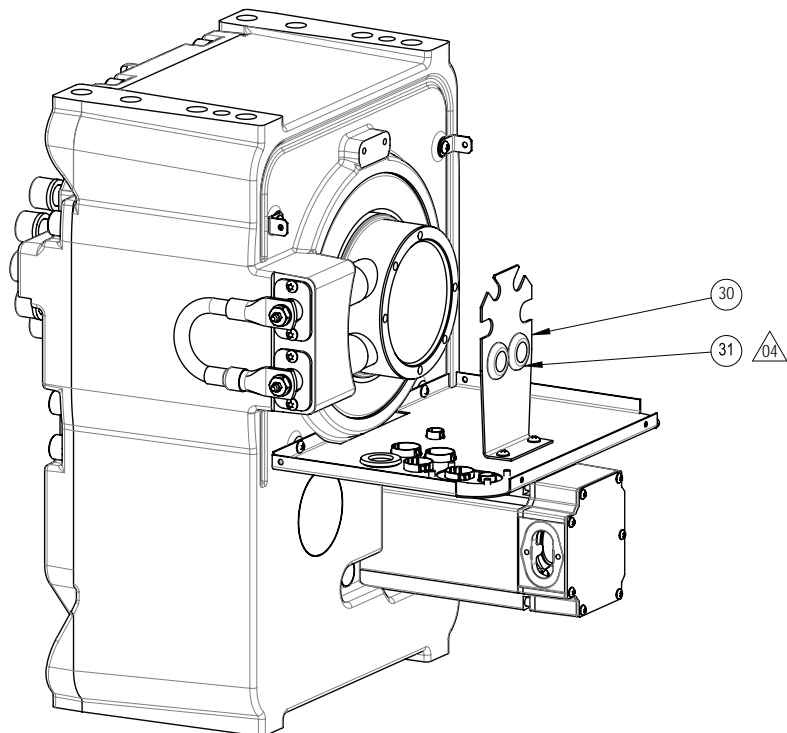
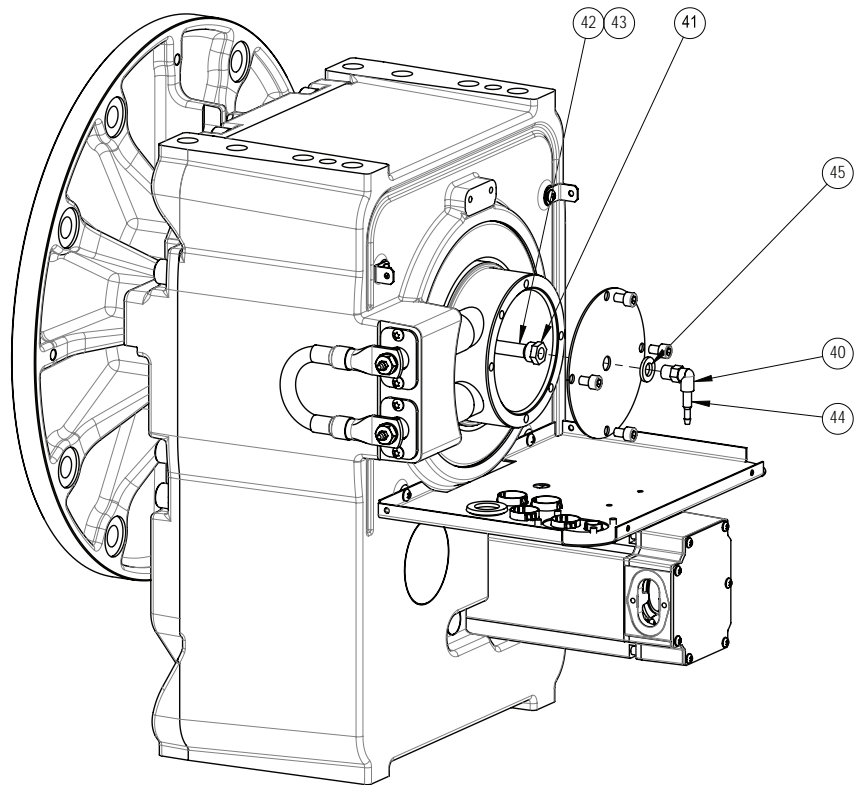
xx100000169

Continues on next page

2 Rotary units and supports

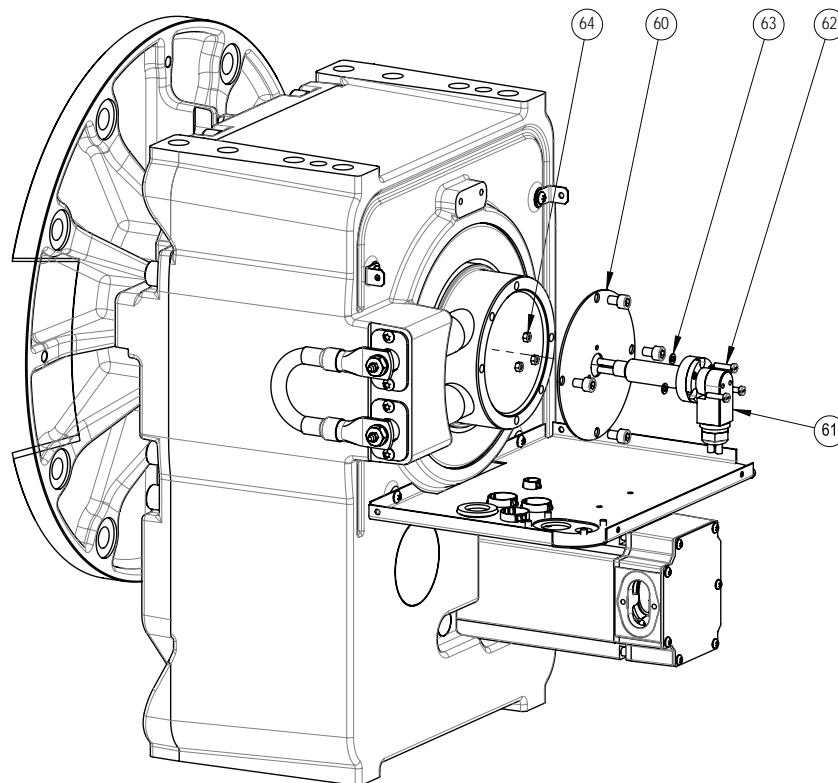
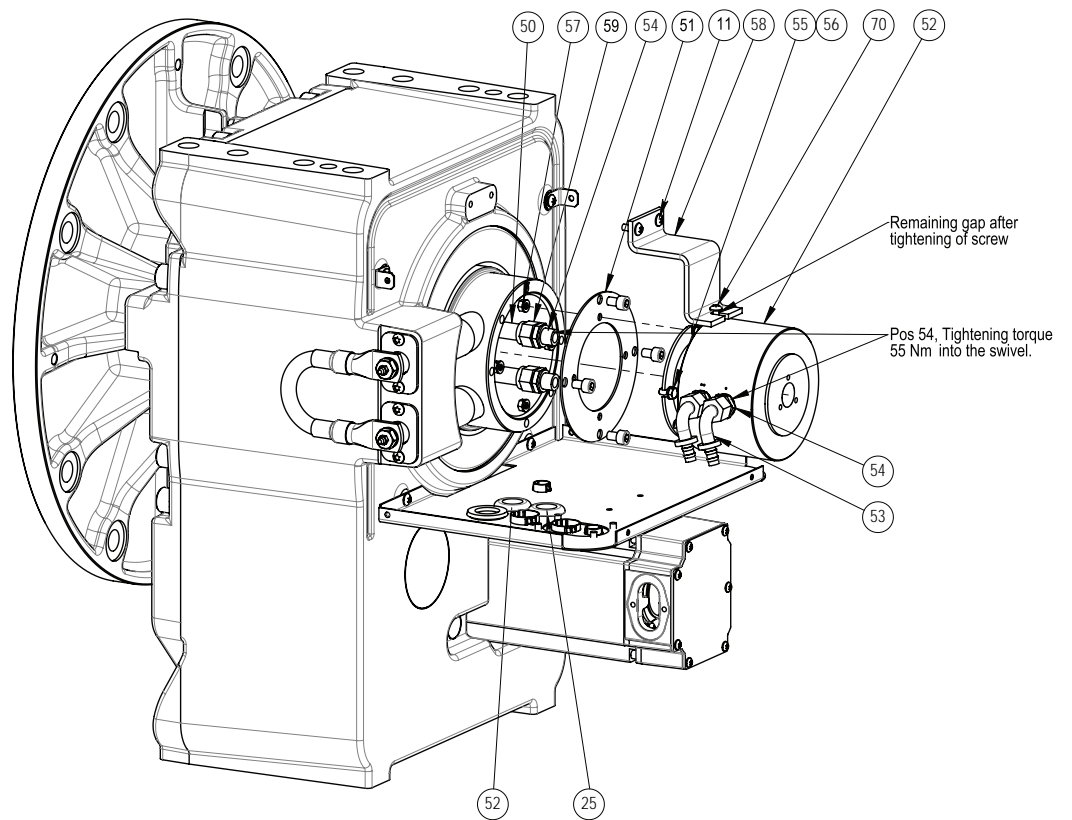
2.3 MTD 2000

Continued



xx100000170

Continues on next page



xx100000171

Components valid from these serial numbers, onwards:

SEROP: POF-110001 -

Continues on next page

2 Rotary units and supports

2.3 MTD 2000

Continued

CNAUS: POF-510001 -



Note

Before ordering these components, make sure that they match the serial number of the IRBP.

Item	Component	Description	Qty	Material, type, etc.	Dimension
1	3HAC035406-008	Gearbox MTD 2000, incl motor	1	Graphite White	
1	3HAC035406-012	Gearbox MTD 2000, incl motor	1	ABB Orange	
13	3HAC050326-001	Cover MTD 2000	1	Graphite White	
13	3HAC036975-001	Cover MTD 2000	1	ABB Orange	

Components valid up to these serial number:

SEROP: - POF-110000

CNAUS: - POF-510000



Note

Before ordering these components, make sure that they match the serial number of the IRBP.

Item	Component	Description	Qty	Material, type, etc.	Dimension
1	3HAC035406-004	Gearbox MTD 2000, incl motor	1	ABB Orange	
13	3HAC036975-001	Cover MTD 2000	1	ABB Orange	

Components valid for all serial numbers



Note

These components are valid for all serial numbers of the IRBP.

Item	Component	Description	Qty	Material, type, etc.	Dimension
2	3HAC032820-001	Rotary disc MTD 2000	1		
4	3HAC035525-001	Washer	12		21x31 T=4
5	503880001	Screw, Current Collector	2		
7	25452021-21	Lubricating nipple	2		AH M6
8	503854001	Contact Bar 2000	2	MTC 2000	
9	418554002	Spring 3x22x45	2		3X22X4
10	503857001	Washer MTC	2		
11	9ADA629-56	Torx pan head roll. screw	4		
12	3HAC036356-001	Bottom sheet MTD 2000	1		
14	503861001	Bracket	2		
15	9ADA629-54	Torx pan head roll. screw	14		
16	3HAC036336-001	Insulated connection plate	1		

Continues on next page

2 Rotary units and supports

2.3 MTD 2000

Continued

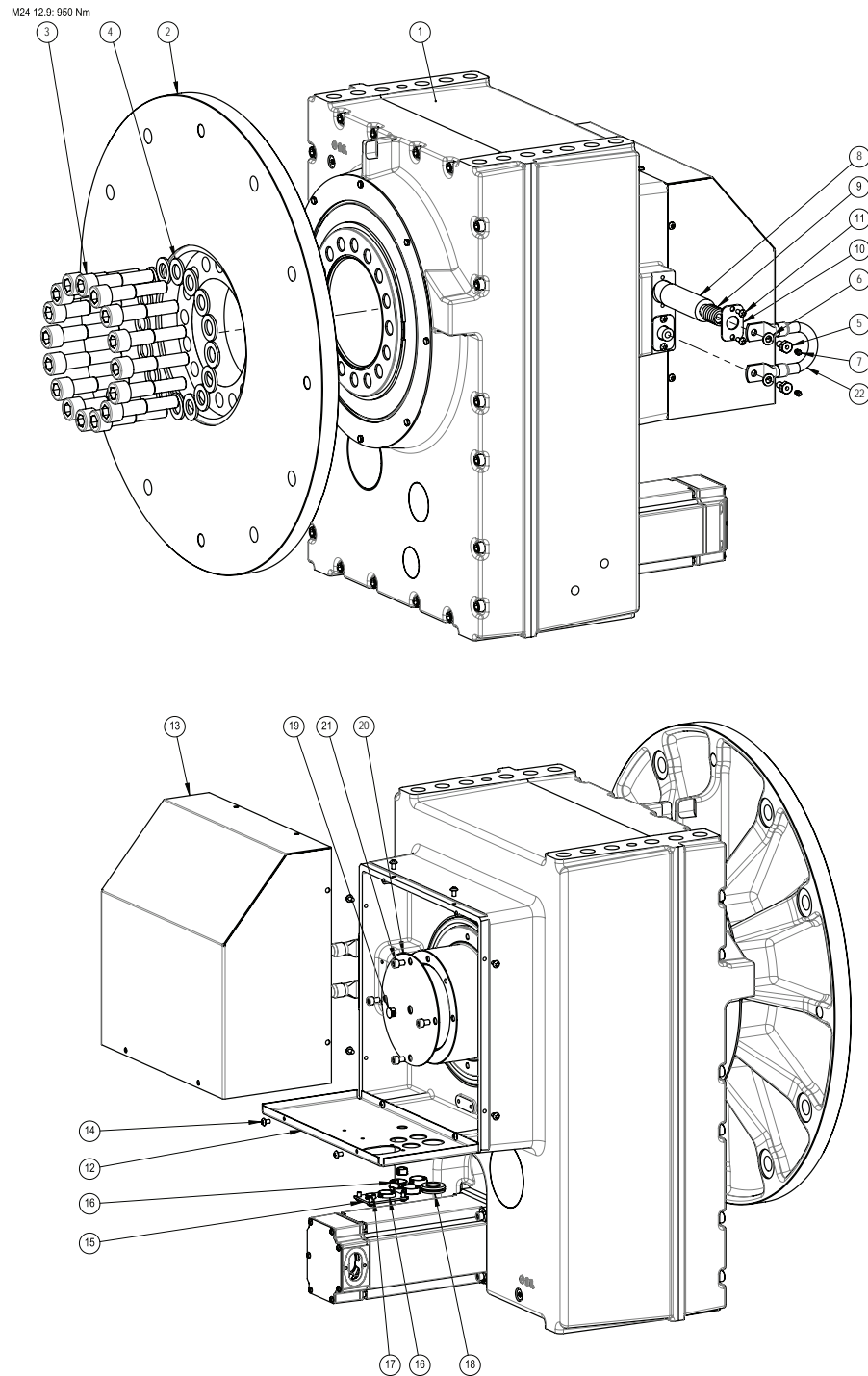
Item	Component	Description	Qty	Material, type, etc.	Dimension
17	3HAC029662-006	Blind Plug	2		D=28
18	3HAC029662-002	Blind Plug	4		D=16
19	504189010	Shelter plug D 32X40/3	1		D= 32X40/3
20	3HAC029662-001	Blind Plug	1		D=14
21	503839003	Cover MTC 2000	1		
23	504504890	Welding return cable 95mm ²	1		0.15m
24	3HAC036806-001	Special grease	12	Type P 34	
30	3HAC036354-001	Cable bracket MTD 2000	1		
40	501728007	ROTATING COUPLING	1		
41	503882001	Nipple 1/4	1		
42	504478001	Hose 1/4	1		
43	193761002	HOSE CLAMP	1	D 13/7	
44	192200103	Hose Nipple	1	1/4" D4.25-4.4"	
45	3HAC028304-004	Washer	1		13/24
50	504478002	Hose	2		3/8 2.2 m
51	503873001	SVIVELADAPTER MTC 2000	1		
52	503876880	Swivel 2-K	1	D 75	
53	504475003	Nipple 90deg.	2		M18X1.5
54	504476003	Coupling	4		M16X1.5
55	9ADA120-21	Hexagon head screw	4		
56	9ADA312-6	Plain washer	8		
57	9ADA267-6	Hexagon nut	4		
58	503872001	Bar 2000	1		
59	504477003	Hose Nipple 3/8 M18X1.5	2		
60	503883003	Cover elec. Swivel MTC 2000	1		
61	3HAC032972-002	Slip ring capsule	1		
62	3HAC033459-002	Screw	3	Polyamide	M5x20
63	3HAC033458-001	Washer	3	Polyamide	5.3x10x1
64	9ADA267-5	Hexagon nut	3		
70	9ADA629-57	Torx pan head roll. screw	1		

2 Rotary units and supports

2.4 MTD 5000

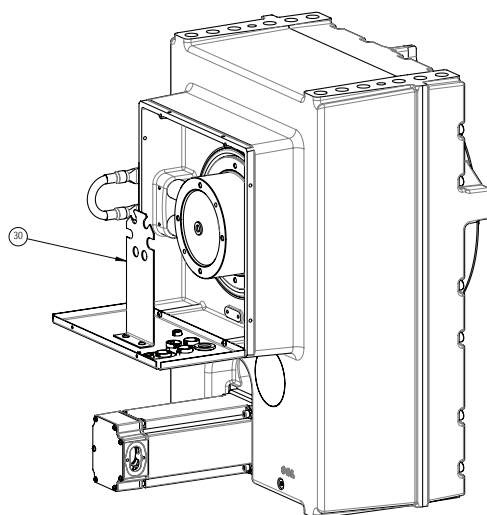
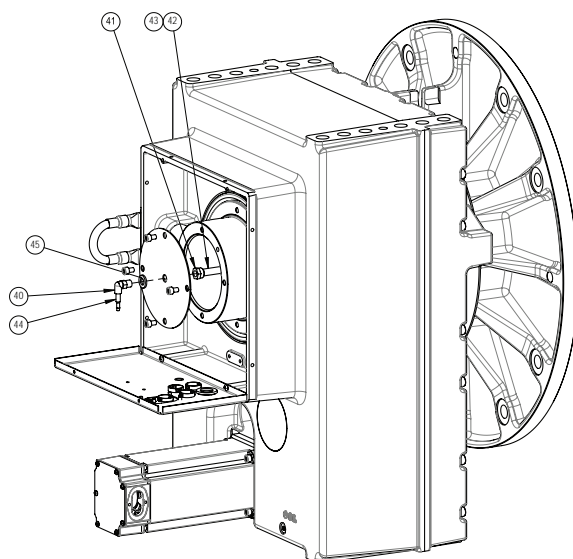
2.4 MTD 5000

Rotary unit MTD 5000



xx100000172

Continues on next page

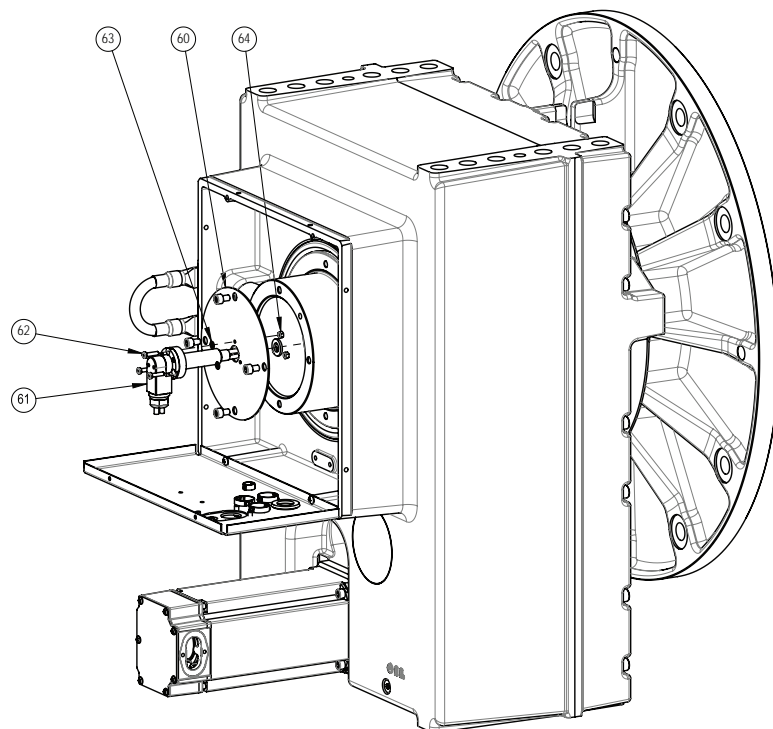
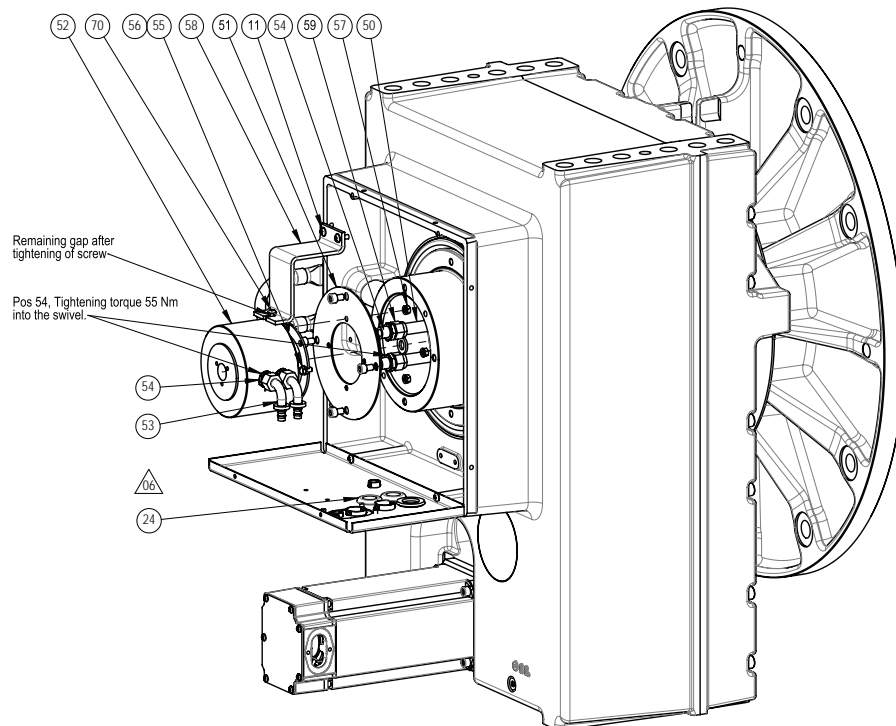


xx100000173

2 Rotary units and supports

2.4 MTD 5000

Continued



xx100000174

Components valid from these serial numbers, onwards:

SEROP: POF-110001 -

Continues on next page

CNAUS: POF-510001 -

**Note**

Before ordering these components, make sure that they match the serial number of the IRBP.

Item	Component	Description	Qty	Material, type, etc.	Dimension
1	3HAC035444-004	Gearbox MTD 5000, incl motor	1	Graphite White	
1	3HAC035444-006	Gearbox MTD 5000, incl motor	1	ABB Orange	
13	3HAC050667-001	Cover MTC 5000	1	Graphite White	
13	503849880	Cover MTC 5000	1	ABB Orange	

Components valid up to these serial numbers:

SEROP: - POF-110000

CNAUS: - POF-510000

**Note**

Before ordering these components, make sure that they match the serial number of the IRBP.

Item	Component	Description	Qty	Material, type, etc.	Dimension
1	3HAC035444-002	Gearbox MTD 5000, incl motor	1	ABB Orange	
13	503849880	Cover MTC 5000	1	ABB Orange	

Components valid for all serial numbers

**Note**

These components are valid for all serial numbers of the IRBP.

Item	Component	Description	Qty	Material, type, etc.	Dimension
2	3HAC032821-001	Rotary disc MTD 5000	1		
4	3HAC028304-007	Washer 25/44	16		25 x 44 T=4
5	503880001	Screw, Current Collector	2		
7	25452021-21	Lubricating nipple	2		AH M6
8	503855001	Contact bar 5000	2		
9	418554002	Spring 3x22x45	2		3X22X4
10	503857001	Washer MTC	2		
11	9ADA629-56	Torx pan head roll. screw	4		
12	3HAC036361-001	Bottom sheet MTD 5000	1		
13	3HAC050667-001	Cover	1		
14	9ADA629-54	Torx pan head roll. screw	14		
15	3HAC036336-001	Insulated connection plate	1		

Continues on next page

2 Rotary units and supports

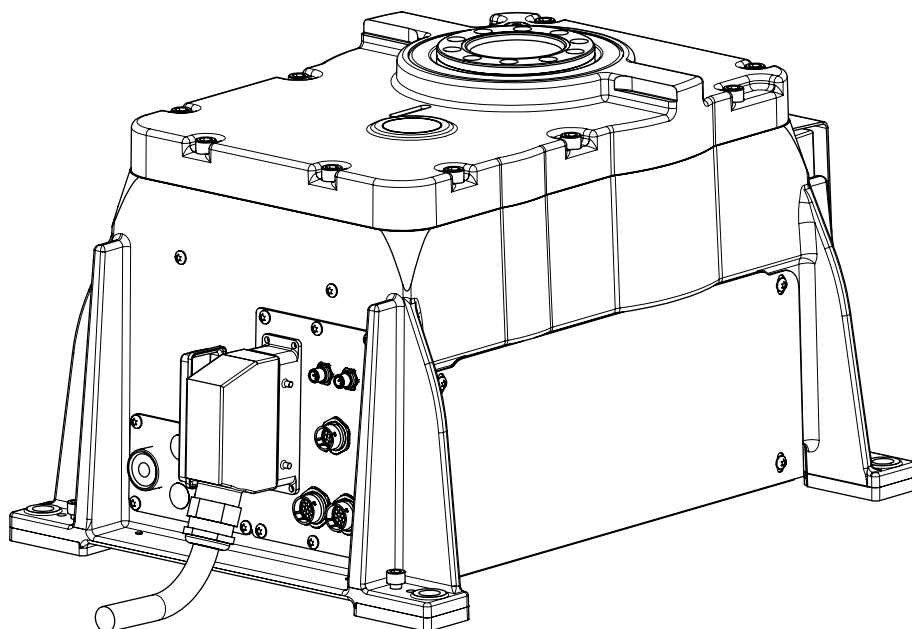
2.4 MTD 5000

Continued

Item	Component	Description	Qty	Material, type, etc.	Dimension
16	3HAC029662-006	Blind plug	2		D=28
17	3HAC029662-002	Blind plug	4		D=16
18	504189010	Shelter plug D 32X40/3	1		D= 32X40/3
19	3HAC029662-001	Blind plug	1		D=14
20	503839004	Welding return cable 95mm ²	1		
21	9ADA183-48	Hex socket head cap screw	4		
22	504504890	Welding return cable 95mm ²	1		0.15m
23	3HAC036806-001	Special grease	16	Type P 34	
30	3HAC036362-001	Cable bracket MTD 5000	1		
40	501728007	ROTATING COUPLING	1		
41	503882001	NIPPEL 1/4	1		
42	504478001	Hose 1/4			1.1 m
43	193761002	HOSE CLAMP	1		D 13/7
44	192200103	Hose Nipple	1		1/4", D4.25-4.4"
45	3HAC028304-004	Washer	1		D 13/24
50	504478002	Hose			3/8 2.2 m
51	503874001	SVIVELADAPTER MTC 5000	1		
52	503876880	Swivel 2-K	1		D 75
53	504475003	Nipple 90deg.	2		M18X1.5
54	504476003	Coupling	4		M16X1.5
55	9ADA120-21	Hexagon head screw	4		
56	9ADA312-6	Plain washer	8		
57	9ADA267-6	Hexagon nut	4		
58	503879001	STAG MTC 5000	1		
59	504477003	Hose Nipple 3/8 M18X1.5	2		
60	503883004	Cover elec. Swivel MTC 5000	1		
61	3HAC032972-002	Slip ring capsule	1		
62	3HAC033459-002	Screw	3	Polyamide	M5x20
63	3HAC033458-001	Washer	3	Polyamide	5.3x10x1
64	9ADA267-5	Hexagon nut	3		
70	9ADA629-57	Torx pan head roll. screw	1		

2.5 MID 1.1

Rotary unit MID 1.1



xx1300002584

Components valid from these serial numbers, onwards:

SEROP: POF-110001 -

CNAUS: POF-510001 -

**Note**

Before ordering these components, make sure that they match the serial number of the IRBP.

Item	Component	Description	Qty	Material, type, etc.	Dimension
1	3HAC035480-004	Gearbox MID 1.1, incl motor	1	Dark grey	
1	3HAC035480-002	Gearbox MID 1.1, incl motor		Black	

Components valid up to these serial numbers:

SEROP: - POF-110000

CNAUS: - POF-510000

**Note**

Before ordering these components, make sure that they match the serial number of the IRBP.

Item	Component	Description	Qty	Material, type, etc.	Dimension
1	3HAC035480-004	Gearbox MID 1.1, incl motor	1	Black	

Continues on next page

2 Rotary units and supports

2.5 MID 1.1

Continued

Components valid for all serial numbers



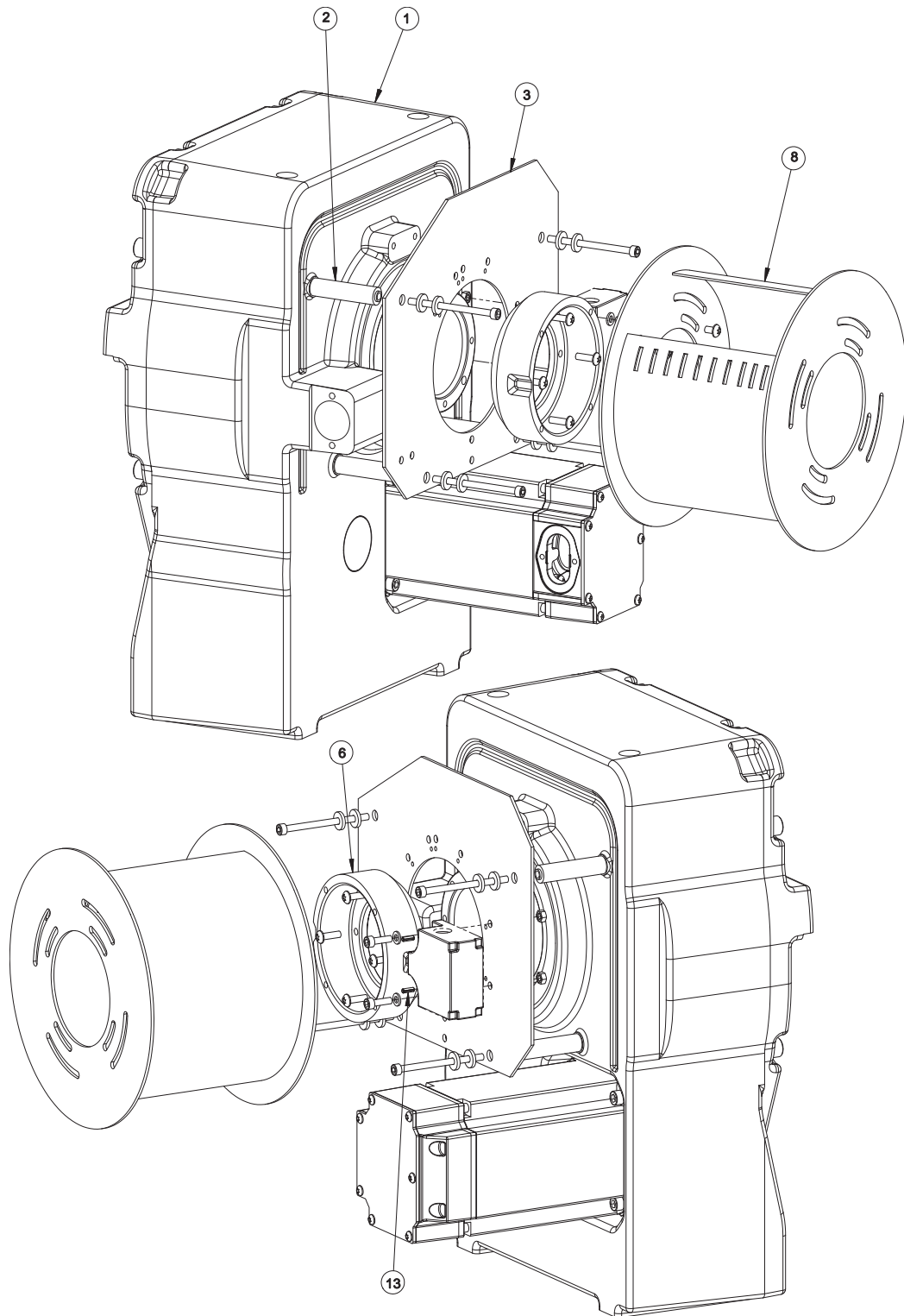
Note

These components are valid for all serial numbers of the IRBP.

Item	Component	Description	Qty	Material, type, etc	Dimension
2	503827001	Distance	4		
3	503940001	Limit Switch plate MIC 1	1		
4	9ADA183-430	Hex socket head cap screw	4	Steel 8.8-A2F	M6x90
5	9ADA327-4	Plain washer, large	8	Steel-mZn12c	6.4x17x3
6	503938001	Limit switch disc MIC 1	1		
8	503865880	Cable drum MIC x.2	1		
13	9ABA142-31	Spring pin, slotted	2	Steel	4x12

2.6 MID 1.2

Rotary unit MID 1.2



xx100000176

Continues on next page

2 Rotary units and supports

2.6 MID 1.2

Continued

Components valid from these serial numbers, onwards:

SEROP: POF-110001 -

CNAUS: POF-510001 -



Note

Before ordering these components, make sure that they match the serial number of the IRBP.

Item	Component	Description	Qty	Material, type, etc.	Dimension
1	3HAC035398-007	Gearbox MID 1.2, incl motor	1	Graphite White	
1	3HAC035398-011	Gearbox MID 1.2, incl motor	1	ABB Orange	

Components valid up to these serial numbers:

SEROP: - POF-110000

CNAUS: - POF-510000



Note

Before ordering these components, make sure that they match the serial number of the IRBP.

Item	Component	Description	Qty	Material, type, etc.	Dimension
1	3HAC035398-003	Gearbox MID 1.2, incl motor	1	ABB Orange	

Components valid for all serial numbers



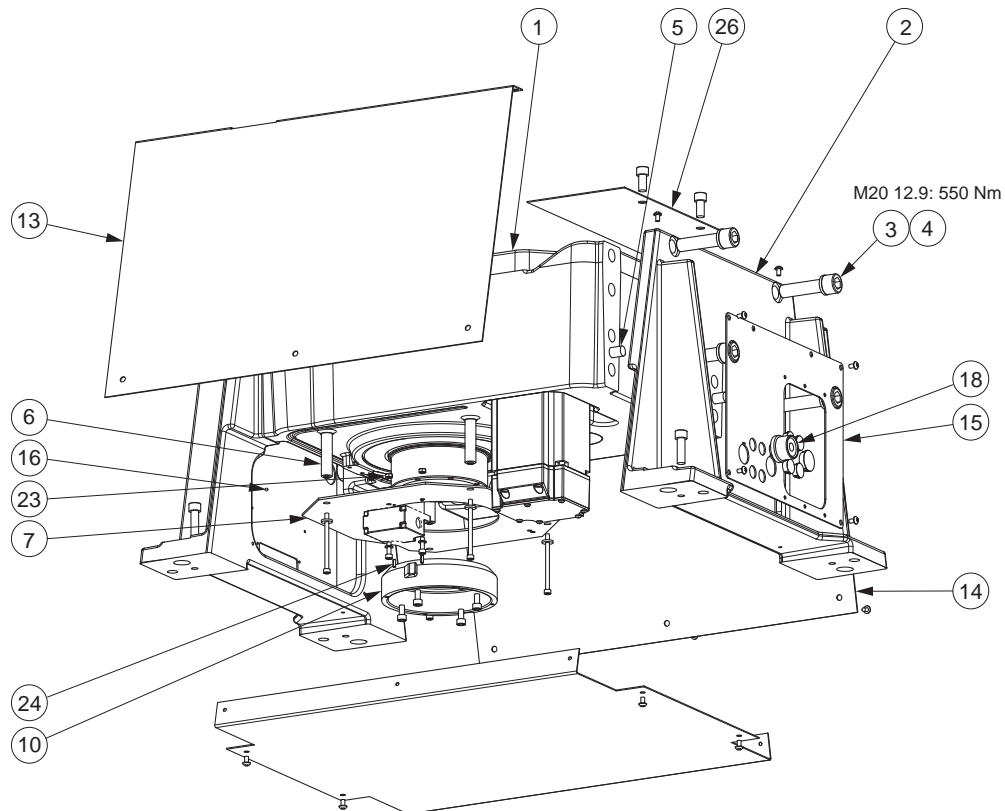
Note

These components are valid for all serial numbers of the IRBP.

Item	Component	Description	Qty	Material, type, etc	Dimension
2	503827001	Distance	4		
3	503940001	Limit Switch plate MIC 1	1		
6	503938001	Limit switch disc MIC 1	1		
8	503865880	Cable drum MIC x.2	1		
13	9ABA142-31	Spring pin, slotted	2	Steel	4x12

2.7 MID 2.1

Rotary unit MID 2.1



xx100000175

Components valid from these serial numbers, onwards:

SEROP: POF-110001 -

CNAUS: POF-510001 -



Note

Before ordering these components, make sure that they match the serial number of the IRBP.

Item	Component	Description	Qty	Material, type, etc.	Dimension
1	3HAC035406-007	Gearbox MID 2.1, incl motor	1	Graphite White	
1	3HAC035406-011	Gearbox MID 2.1, incl motor	1	ABB Orange	

Components valid up to these serial numbers:

SEROP: - POF-110000

Continues on next page

2 Rotary units and supports

2.7 MID 2.1

Continued

CNAUS: - POF-510000



Note

Before ordering these components, make sure that they match the serial number of the IRBP.

Item	Component	Description	Qty	Material, type, etc.	Dimension
1	3HAC035406-005	Gearbox MID 2.1, incl motor	1	ABB Orange	

Components valid for all serial numbers



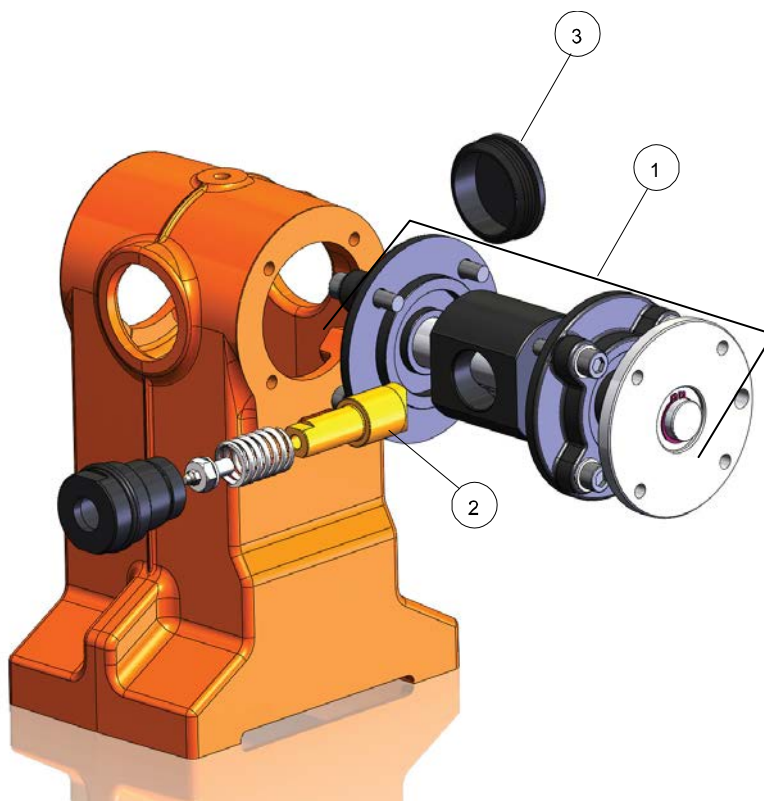
Note

These components are valid for all serial numbers of the IRBP.

Item	Component	Description	Qty	Material, type, etc.	Dimension
2	3HAC032646-001	Frame MID 2.1	2		
3	3HAB3409-217	Hex socket head cap screw	8	Steel 12.9 Gle 603+Geo500	M20x80
4	3HAC035525-001	Washer	8		21x31 T=4
5	3HEA418698-007	Guide pin	4		Ø16x40
6	503827001	Distance	4		
7	503941001	Limit switch plate MIC 2	1	MIC 2	M6x90
10	503939001	Limit switch disc MIC 2	1	MIC 2	
13	3HAC035506-001	Side cover MID 2.1	1		
14	3HAC035507-001	Side cover MID 2.1	1		
15	3HAC035511-001	Connection plate MID 2.1	1		
16	3HAC035512-001	Connection plate MID 2.1	1		
18	160362881	Welding current term OKC 50	1	OKC50	
24	9ABA142-31	Spring pin, slotted	2	Steel	4x12
26	3HAC036531-001	Cover plate	1		T=1.5

2.8 Support collar

Support collar illustration



xx100000295

Support collar 250

Item	Component	Description	Qty	Material, type, etc	Dimension
1	504212880	SUPPORT BEARING MTC 250	1		
2	3HAC037002-001	Contact bar 250	1		
3	3HAC035520-001	Plug	1		

Support collar 500/750

Item	Component	Description	Qty	Material, type, etc	Dimension
1	504215880	SUPPORT BEARING MTC 750	1		
2	3HAC037005-001	Contact bar 500/750	1		
3	3HAC035520-001	Plug	1		

Support collar 2000

Item	Component	Description	Qty	Material, type, etc	Dimension
1	504581880	SUPPORT BEARING MTC 2000	1		
2	3HAC037007-001	Contact bar 2000	1		

Continues on next page

2 Rotary units and supports

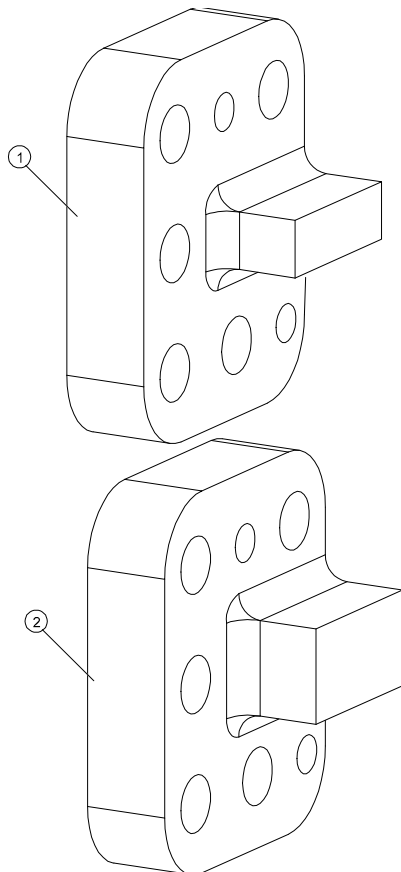
2.8 Support collar

Continued

Item	Component	Description	Qty	Material, type, etc	Dimension
3	3HAC035520-001	Plug	1		

2.9 Stop lug

Stop lug



xx100000297

Item	Component	Description	Qty	Material, type, etc.	Dimension
1	505387-001	Stop lug	1	MID 1	
2	505388-001	Stop lug	1	MID 2	

This page is intentionally left blank

3 Motor units

3.1 Motor units for MTD 250

Motor units for MTD 250

Components valid from these serial numbers, onwards:

SEROP: POF-110001 -

CNAUS: POF-510001 -



Note

Before ordering these components, make sure that they match the serial number of the IRBP.

Item	Component	Description	Qty	Material, type, etc.	Note
1	3HAC038187-003	Motor unit for MTD 250	1	Graphite White	Complete
1	3HAC038187-004	Motor unit for MTD 250	1	ABB Orange	Complete

Components valid up to these serial numbers:

SEROP: - POF-110000

CNAUS: - POF-510000



Note

Before ordering these components, make sure that they match the serial number of the IRBP.

Item	Component	Description	Qty	Material, type, etc.	Note
1	3HAC038187-002	Motor unit for MTD 250	1	ABB Orange	Complete
	3HAC034216-001	Rot. AC motor incl. pinion	1		

Seal and isolation kit



Note

These components are valid for all serial numbers of the IRBP.

Spare part number	Description	Qty.	Note
3HAC038213-002	Seal and isolation kit	1	

The seal and isolation kit contains:

Pos	Description	Qty.	Note
11	O-ring	1	Nitrile Rubber, D80x3
12	Insulating material	1	
13	Insulating tube	4	
14	Insulating material	4	

Continues on next page

3 Motor units

3.1 Motor units for MTD 250

Continued

Pos	Description	Qty.	Note
15	Plain washer	4	Steel-A2F, 8.4x16x1.6
16	Hex socket head cap screw	4	Steel 12.9 Gle 603+Geo500 /M8x25

Spare part kit connection box, complete - Components valid from these serial numbers, onwards:

SEROP: POF-110001 -

CNAUS: POF-510001 -



Note

Before ordering these components, make sure that they match the serial number of the IRBP.

Spare part number	Description	Qty.	Note
3HAC038188-003	Spare part kit connection box, complete	1	Graphite White
3HAC038188-004	Spare part kit connection box, complete	1	ABB Orange

Spare part kit connection box, complete - Components valid up to these serial numbers:

SEROP: - POF-110000

CNAUS: - POF-510000



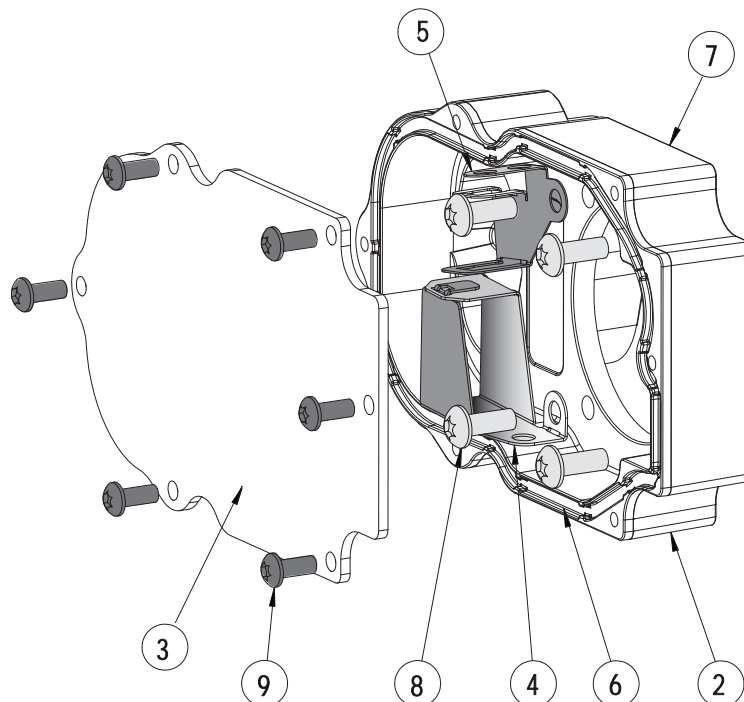
Note

Before ordering these components, make sure that they match the serial number of the IRBP.

Spare part number	Description	Qty.	Note
3HAC038188-002	Spare part kit connection box, complete	1	ABB Orange

Continues on next page

Spare part kit connection box, complete - Valid for all serial numbers of the IRBP:



xx1400002555

The spare part kit connection box complete contains:

Pos	Description	Qty.	Note
2	Connection box	1	
3	Cover	1	
4	Connector bracket MP	1	
5	Connector bracket 9p Dsub	1	
6	O-ring	1	Nitrile rubber, 150.0x2.0
7	O-ring	1	Nitrile rubber, D1=100 D2=2
8	Torx pan head screw	4	Steel 8.8-A2F / M6x16
9	Torx pan head screw	6	Steel 8.8-A2F / M5x12
	Surface treatment, Graphite White		Color depends on which spare part kit is ordered.
	Surface treatment, ABB Orange		Color depends on which spare part kit is ordered.

3 Motor units

3.2 Motor unit for MTD 500-750

3.2 Motor unit for MTD 500-750

Motor units for MTD 500-750

Components valid from these serial numbers, onwards:

SEROP: POF-110001 -

CNAUS: POF-510001 -



Note

Before ordering these components, make sure that they match the serial number of the IRBP.

Item	Component	Description	Qty	Material, type, etc.	Note
1	3HAC038210-010	Motor unit for MTD 500-750	1	Graphite White	Complete
1	3HAC038210-014	Motor unit for MTD 500-750	1	ABB Orange	Complete

Components valid up to these serial numbers:

SEROP: - POF-110000

CNAUS: - POF-510000



Note

Before ordering these components, make sure that they match the serial number of the IRBP.

Item	Component	Description	Qty	Material, type, etc.	Note
1	3HAC038210-002	Motor unit for MTD 500-750	1	ABB Orange	Complete
	3HAC034222-001	Rot. AC motor incl. pinion	1		

Seal and isolation kit



Note

These components are valid for all serial numbers of the IRBP.

Spare part number	Description	Qty.	Note
3HAC038214-002	Seal and isolation kit	1	

The seal and isolation kit contains:

Pos	Description	Qty.	Note
11	O-ring	2	Nitrile Rubber D102x3
12	Insulating material	4	
13	Insulating tube	7	
14	Insulating material	4	
15	Washer	4	
16	Hex socket head cap screw	4	Steel 12.9 Gle. 603+Geo500 /M8x30

Continues on next page

Spare part kit connection box, complete - Components valid from these serial numbers, onwards:

SEROP: POF-110001 -

CNAUS: POF-510001 -



Note

Before ordering these components, make sure that they match the serial number of the IRBP.

Spare part number	Description	Qty.	Note
3HAC038209-003	Spare part kit connection box, complete	1	Graphite White
3HAC038209-005	Spare part kit connection box, complete	1	ABB Orange

Spare part kit connection box, complete - Components valid up to these serial numbers:

SEROP: - POF-110000

CNAUS: - POF-510000



Note

Before ordering these components, make sure that they match the serial number of the IRBP.

Spare part number	Description	Qty.	Note
3HAC038209-002	Spare part kit connection box, complete	1	ABB Orange

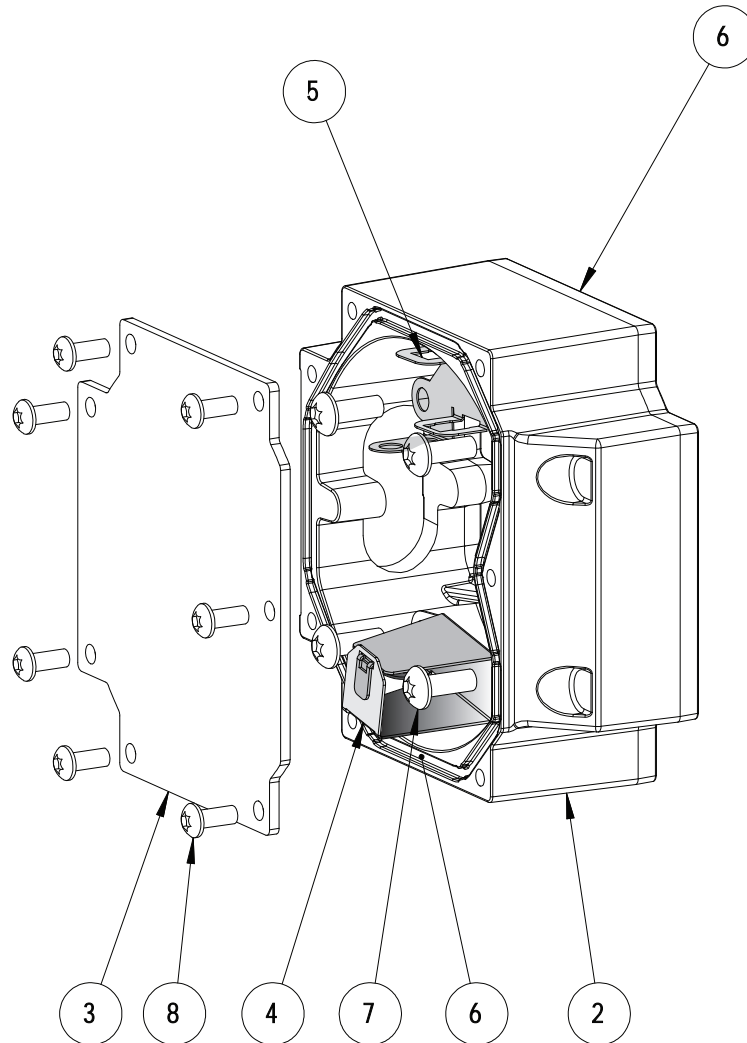
Continues on next page

3 Motor units

3.2 Motor unit for MTD 500-750

Continued

Spare part kit connection box, complete - Valid for all serial numbers of the IRBP:



xx1400002556

The spare part kit connection box complete contains:

Pos	Description	Qty.	Note
2	Connection box FS130	1	
3	Cover box FS130	1	
4	Connector bracket MP	1	
5	Connector bracket 9p Dsub	1	
6	O-ring	2	Nitrile Rubber D119x3
7	Torx pan head screw	7	Steel 8.8-A2F M6x16
8	Torx pan head screw	4	Steel 8.8-A2F M5x12
-	Surface treatment, Graphite White	50 ml	Color depends on which spare part kit is ordered.
-	Surface treatment, ABB Orange	50 ml	Color depends on which spare part kit is ordered.

3.3 Motor units for MTD 2000

Motor units for MTD 2000

Components valid from these serial numbers, onwards:

SEROP: POF-110001 -

CNAUS: POF-510001 -



Note

Before ordering these components, make sure that they match the serial number of the IRBP.

Item	Component	Description	Qty	Material, type, etc.	Note
1	3HAC038210-009	Motor unit for MTD 2000	1	Graphite White	Complete
1	3HAC038210-013	Motor unit for MTD 2000	1	ABB Orange	Complete

Components valid up to these serial numbers:

SEROP: - POF-110000

CNAUS: - POF-510000



Note

Before ordering these components, make sure that they match the serial number of the IRBP.

Item	Component	Description	Qty	Material, type, etc.	Note
1	3HAC038210-003	Motor unit for MTD 2000	1	ABB Orange	Complete
	3HAC034231-001	Rot. AC motor incl. pinion	1		

Seal and isolation kit



Note

These components are valid for all serial numbers of the IRBP.

Spare part number	Qty.	Description	Note
3HAC038214-002	1	Seal and isolation kit	

The seal and isolation kit contains:



Note

These components are valid for all serial numbers of the IRBP.

Pos	Description	Qty.	Note
11	O-ring	1	Nitrile Rubber D102x3
12	Insulating material	1	
13	Insulating tube	4	

Continues on next page

3 Motor units

3.3 Motor units for MTD 2000

Continued

Pos	Description	Qty.	Note
14	Insulating material	4	
15	Washer	4	
16	Hex socket head cap screw	4	Steel 12.9 Gle. 603+Geo500 /M8x30

Spare part kit connection box, complete - Components valid from these serial numbers, onwards:

SEROP: POF-110001 -

CNAUS: POF-510001 -



Note

Before ordering these components, make sure that they match the serial number of the IRBP.

Spare part number	Description	Qty.	Note
3HAC038209-003	Spare part kit connection box, complete	1	Graphite White
3HAC038209-005	Spare part kit connection box, complete	1	ABB Orange

Spare part kit connection box, complete - Components valid up to these serial numbers:

SEROP: - POF-110000

CNAUS: - POF-510000



Note

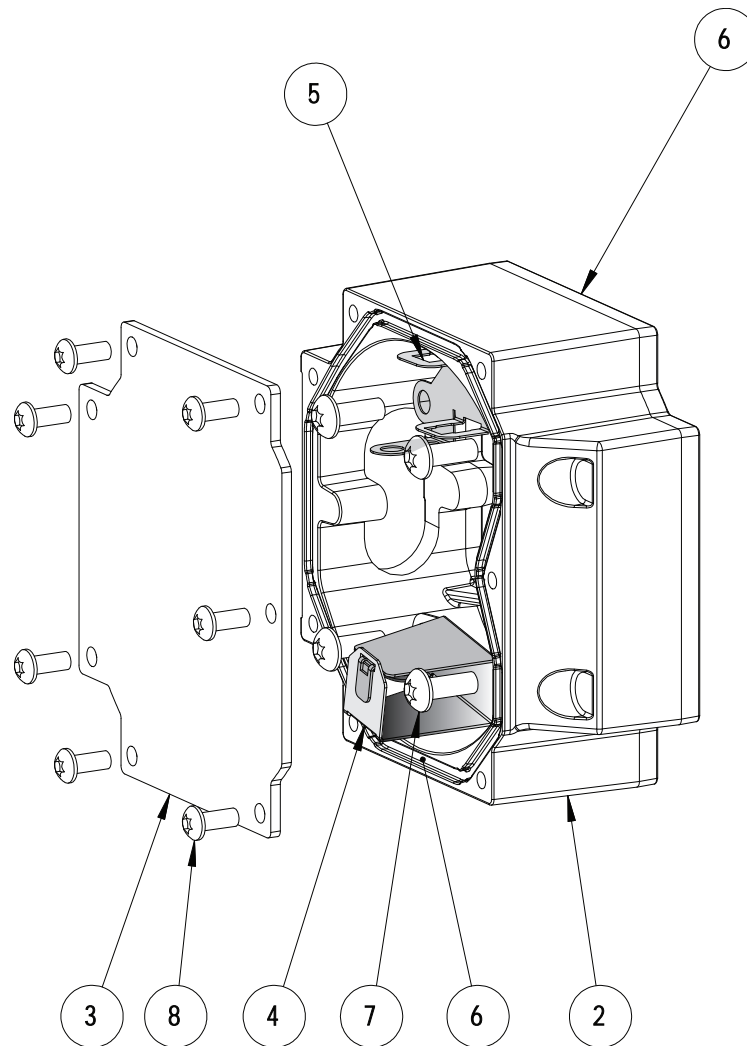
Before ordering these components, make sure that they match the serial number of the IRBP.

Spare part number	Description	Qty.	Note
3HAC038209-002	Spare part kit connection box, complete	1	ABB Orange

Continues on next page

Spare part kit connection box complete - Valid for all serial numbers of the IRBP:

The spare part kit connection box complete, contains:



xx1400002556

Pos	Description	Qty.	Note
1	Connection box FS130	1	
2	Cover box FS130	1	
3	Connector bracket MP	1	
4	Connector bracket 9p Dsub	1	
5	O-ring	2	Nitrile Rubber D119x3
6	Torx pan head screw	4	Steel 8.8-A2F M6x16
7	Torx pan head screw	4	Steel 8.8-A2F M5x12
8	Surface treatment ABB Orange		Color delivered, depends on which connection box is ordered.
8	Surface treatment Graphite White		Color delivered, depends on which connection box is ordered.

3 Motor units

3.4 Motor units for MTD 5000

3.4 Motor units for MTD 5000

Motor units for MTD 5000

Components valid from these serial numbers, onwards:

SEROP: POF-110001 -

CNAUS: POF-510001 -



Note

Before ordering these components, make sure that they match the serial number of the IRBP.

Item	Component	Description	Qty	Material, type, etc.	Note
1	3HAC038212-003	Motor unit for MTD 5000	1	Graphite White	Complete
1	3HAC038212-004	Motor unit for MTD 5000	1	ABB Orange	Complete

Components valid up to these serial numbers:

SEROP: - POF-110000

CNAUS: - POF-510000



Note

Before ordering these components, make sure that they match the serial number of the IRBP.

Item	Component	Description	Qty	Material, type, etc.	Note
1	3HAC038212-002	Motor unit for MTD 5000	1	ABB Orange	Complete
	3HAC035443-001	Rot. AC motor incl. shaft adapter	1		

Seal and isolation kit

Spare part number	Description	Qty.	Note
3HAC038215-002	Seal and isolation kit	1	

The seal and isolation kit contains:



Note

These components are valid for all serial numbers of the IRBP.

Pos	Description	Qty.	Note
13	Insulating tube	4	
14	Insulating material	4	
15	Washer	4	
16	Hex socket head cap screw	4	Steel 12.9 Gle603+Geo500

Spare part kit connection box, complete - Components valid from these serial numbers, onwards:

SEROP: POF-110001 -

Continues on next page

CNAUS: POF-510001 -

**Note**

Before ordering these components, make sure that they match the serial number of the IRBP.

Spare part number	Description	Qty.	Note
3HAC038209-003	Spare part kit connection box, complete	1	Graphite White
3HAC038209-005	Spare part kit connection box, complete	1	ABB Orange

Spare part kit connection box, complete - Components valid up to these serial numbers:

SEROP: - POF-110000

CNAUS: - POF-510000

**Note**

Before ordering these components, make sure that they match the serial number of the IRBP.

Spare part number	Description	Qty.	Note
3HAC038209-002	Spare part kit connection box, complete	1	ABB Orange

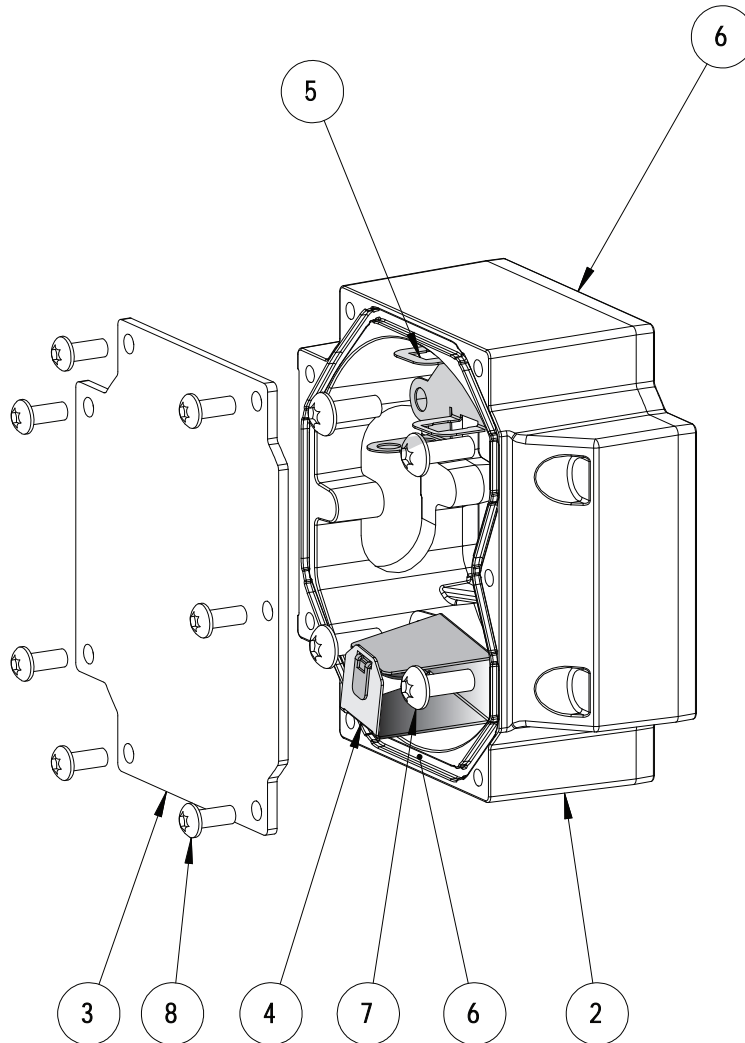
Continues on next page

3 Motor units

3.4 Motor units for MTD 5000

Continued

Spare part kit connection box, complete - Valid for all serial numbers of the IRBP:



xx1400002556

The spare part kit connection box complete contains:

Pos	Description	Qty.	Note
2	Connection box FS130	1	
3	Cover box FS130	1	
4	Connector bracket MP	1	
5	Connector bracket 9p Dsub	1	
6	O-ring	2	Nitrile Rubber D119x3
7	Torx pan head screw	7	Steel 8.8-A2F M6x16
8	Torx pan head screw	4	Steel 8.8-A2F M5x12
-	Surface treatment, Graphite White	50 ml	Color depends on which spare part kit is ordered.
-	Surface treatment, ABB Orange	50 ml	Color depends on which spare part kit is ordered.

3.5 Motor unit for MID 1.2

Motor units for MID 1.2

Components valid from these serial numbers, onwards:

SEROP: POF-110001 -

CNAUS: POF-510001 -



Note

Before ordering these components, make sure that they match the serial number of the IRBP.

Item	Component	Description	Qty	Material, type, etc.	Note
1	3HAC038210-007	Motor unit for MID 1.2	1	Graphite White	Complete
1	3HAC038210-011	Motor unit for MID 1.2	1	ABB Orange	Complete

Components valid up to these serial numbers:

SEROP: - POF-110000

CNAUS: - POF-510000



Note

Before ordering these components, make sure that they match the serial number of the IRBP.

Item	Component	Description	Qty	Material, type, etc.	Note
1	3HAC038210-004	Motor unit for MID 1.2	1	ABB Orange	Complete
	3HAC034280-001	Rot. AC motor incl. pinion	1		

Seal and isolation kit 3HAC038214-002



Note

These components are valid for all serial numbers of the IRBP.

Pos	Spare parts	Qty.	Description	Note
11	3HAB3772-107	2	O-ring	Nitrile Rubber D102x3
12	3HAC034268-001	4	Insulating material	
13	3HAC036835-002	7	Insulating tube	
14	3HAC037222-001	4	Insulating material	
15	3HAC037202-001	4	Washer	
16	3HAB3409-38	4	Hex socket head cap screw	Steel 12.9 Gle. 603+Geo500 /M8x30

Spare part kit connection box, complete - Components valid from these serial numbers, onwards:

SEROP: POF-110001 -

Continues on next page

3 Motor units

3.5 Motor unit for MID 1.2

Continued

CNAUS: POF-510001 -



Note

Before ordering these components, make sure that they match the serial number of the IRBP.

Spare part number	Description	Qty.	Note
3HAC038209-003	Spare part kit connection box, complete	1	Graphite White
3HAC038209-005	Spare part kit connection box, complete	1	ABB Orange

Spare part kit connection box, complete - Components valid up to these serial numbers:

SEROP: - POF-110000

CNAUS: - POF-510000



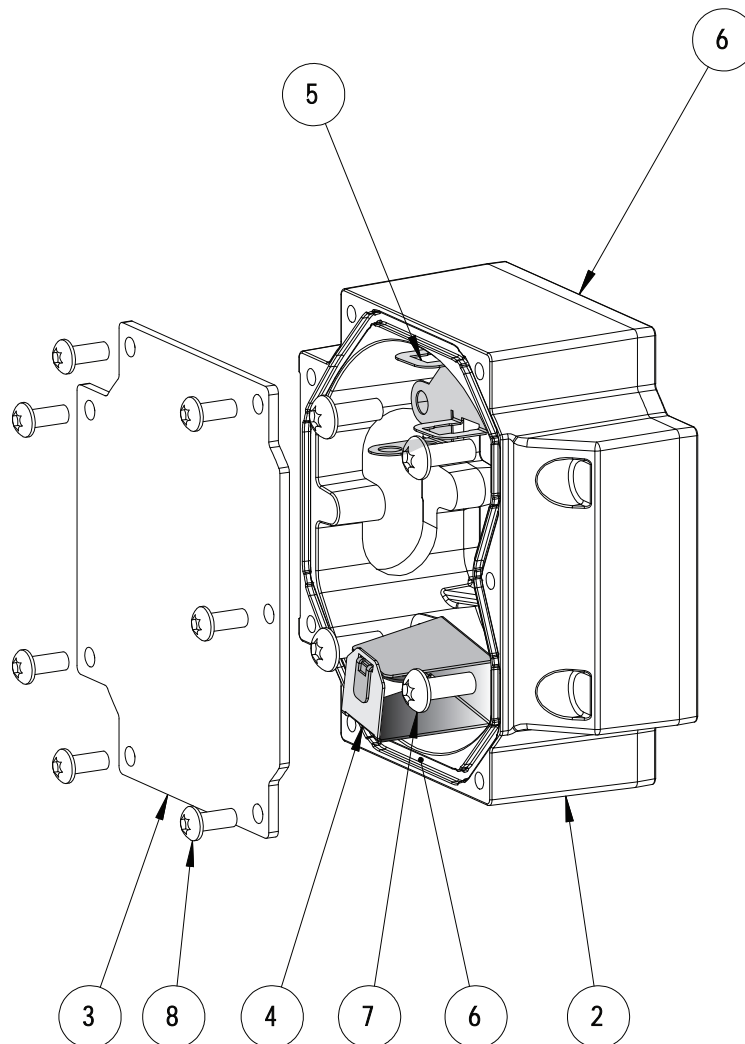
Note

Before ordering these components, make sure that they match the serial number of the IRBP.

Spare part number	Description	Qty.	Note
3HAC038209-002	Spare part kit connection box, complete	1	ABB Orange

Continues on next page

Spare part kit connection boxes - Valid for all serial numbers of the IRBP:



xx1400002556

The spare part kit connection box complete, contains:

Pos	Qty.	Description	Note
2	1	Connection box FS130	
3	1	Cover box FS130	
4	1	Connector bracket MP	
5	1	Connector bracket 9p Dsub	
6	2	O-ring	Nitrile Rubber D119x3
7	7	Torx pan head screw	Steel 8.8-A2F M6x16
8	4	Torx pan head screw	Steel 8.8-A2F M5x12
		Surface treatment, Graphite White	Color depends on which spare part kit is ordered.
		Surface treatment, ABB Orange	Color depends on which spare part kit is ordered.

3 Motor units

3.6 Motor unit for MID 2.1-2.2

3.6 Motor unit for MID 2.1-2.2

Motor units for MID 2.1 - 2.2

Components valid from these serial numbers, onwards:

SEROP: POF-110001 -

CNAUS: POF-510001 -



Note

Before ordering these components, make sure that they match the serial number of the IRBP.

Item	Component	Description	Qty	Material, type, etc.	Note
1	3HAC038210-008	Motor unit for MID 2.1-2-2	1	Graphite White	Complete
1	3HAC038210-012	Motor unit for MID 2.1-2-2	1	ABB Orange	Complete

Components valid up to these serial numbers:

SEROP: - POF-110000

CNAUS: - POF-510000



Note

Before ordering these components, make sure that they match the serial number of the IRBP.

Item	Component	Description	Qty	Material, type, etc.	Note
1	3HAC038210-005	Motor unit for MID 1.2	1	ABB Orange	Complete
	3HAC034274-001	Rot. AC motor incl. pinion	1		

Seal and isolation kit 3HAC038214-002

Spare parts	Qty.	Description	Note
3HAC038214-002	1	O-ring	Nitrile Rubber D102x3

The seal and isolation kit contains:



Note

These components are valid for all serial numbers of the IRBP.

Pos	Qty.	Description	Note
11	2	O-ring	Nitrile Rubber D102x3
12	4	Insulating material	
13	7	Insulating tube	
14	4	Insulating material	
15	4	Washer	
16	4	Hex socket head cap screw	Steel 12.9 Gle. 603+Geo500 /M8x30

Continues on next page

Spare part kit connection box, complete - Components valid from these serial numbers, onwards:

SEROP: - POF-110001

CNAUS: - POF-510001



Note

Before ordering these components, make sure that they match the serial number of the IRBP.

Spare part number	Description	Qty.	Note
3HAC038209-003	Spare part kit connection box, complete	1	Graphite White
3HAC038209-005	Spare part kit connection box, complete	1	ABB Orange

Spare part kit connection box, complete - Components valid up to these serial numbers:

SEROP: - POF-110000

CNAUS: - POF-510000



Note

Before ordering these components, make sure that they match the serial number of the IRBP.

Spare part number	Description	Qty.	Note
3HAC038209-002	Spare part kit connection box, complete	1	ABB Orange

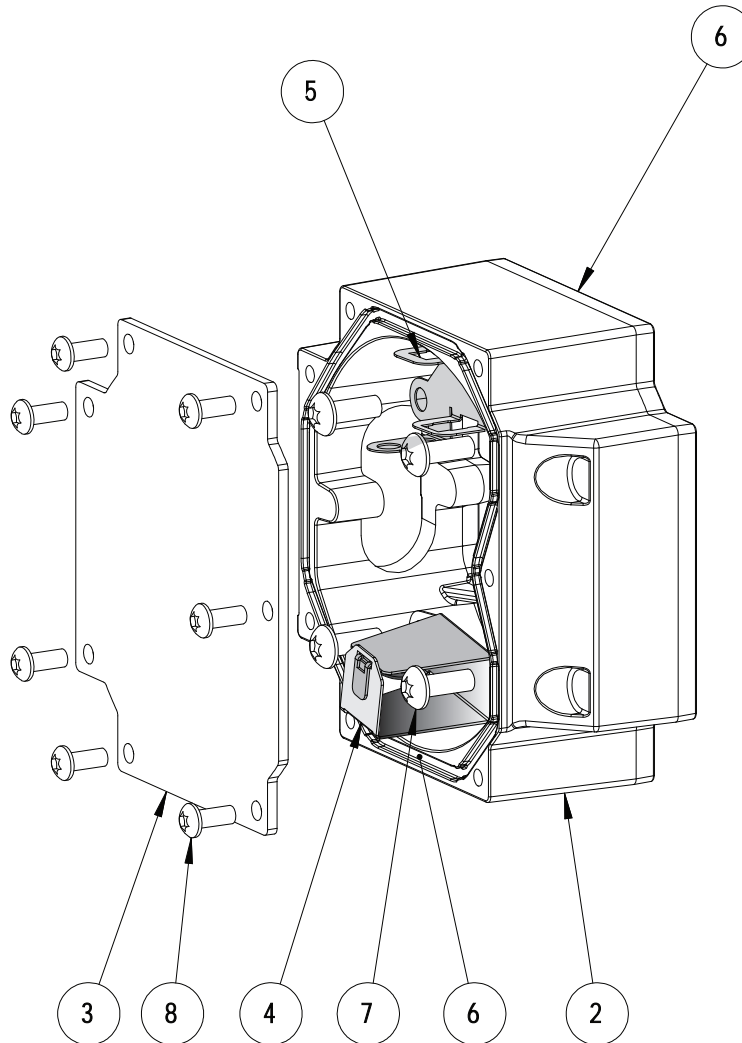
Continues on next page

3 Motor units

3.6 Motor unit for MID 2.1-2.2

Continued

Spare part kit connection box complete - Valid for all serial numbers of the IRBP:



xx1400002556

The spare part kit connection box complete, contains:

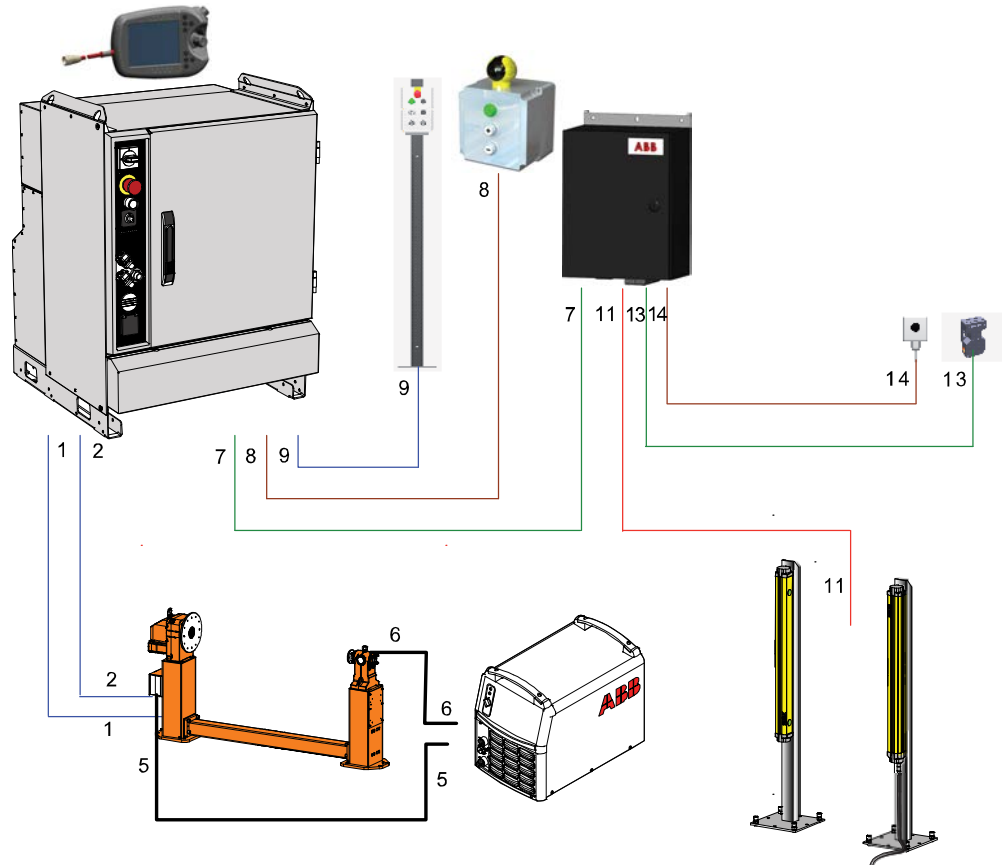
Pos	Qty.	Description	Note
2	1	Connection box FS130	
3	1	Cover box FS130	
4	1	Connector bracket MP	
5	1	Connector bracket 9p Dsub	
6	2	O-ring	Nitrile Rubber D119x3
7	7	Torx pan head screw	Steel 8.8-A2F M6x16
8	4	Torx pan head screw	Steel 8.8-A2F M5x12
		Surface treatment, Graphite White	Color depends on which spare part kit is ordered.
		Surface treatment, ABB Orange	Color depends on which spare part kit is ordered.

4 Electrical spare parts

4.1 External connectors

4.1.1 Spare parts, cables

Spare parts, floor cables



xx100000245

Pos	Description	Spare part	Length	Note
1	Control cable signal IRBP	3HAC068917-001	7	
		3HEA800800-001	10	
		3HAC068918-001	15	
		3HAC068919-001	22	
		3HAC068920-001	30	
		3HAC061329-001	7	
		3HAC061329-002	10	
		3HAC061329-003	15	
		3HAC061329-004	22	
				3HAC061329-005

Continues on next page

4 Electrical spare parts

4.1.1 Spare parts, cables

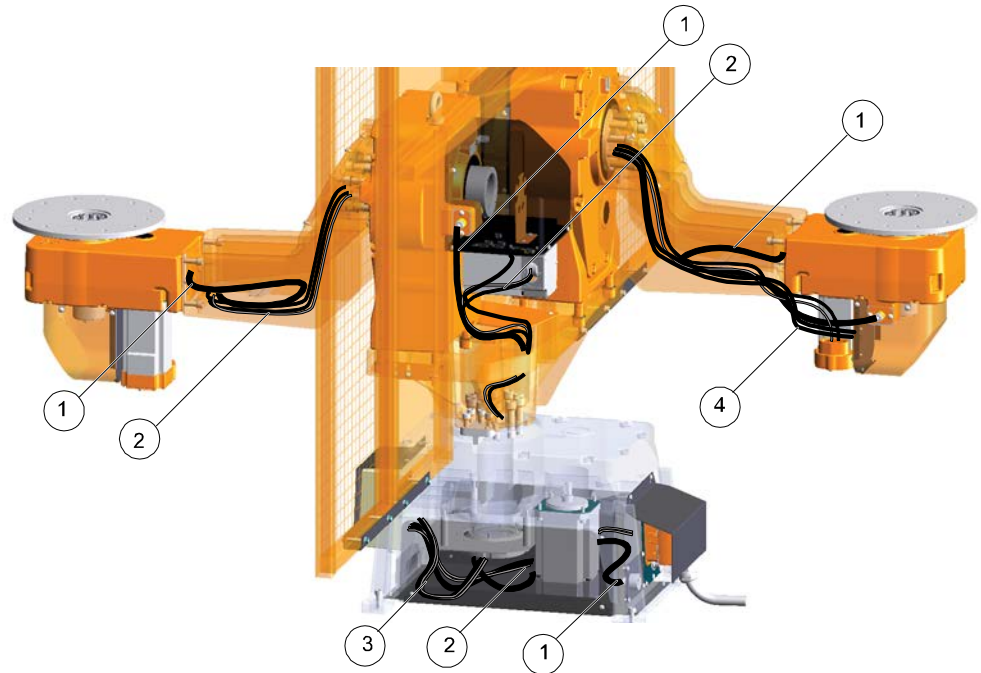
Continued

Pos	Description	Spare part	Length	Note
2	Cable motor IRBP	3HAC035346-001	7	Not for IRBP L
		3HAC035346-002	10	
		3HAC035346-003	15	
		3HAC035346-006	22	
		3HAC035346-007	30	
5	Return Cable 95mm ² , 2x OKC	418620884	7	
	Return Cable 95mm ² , 2x OKC	418620885	10	
	Return Cable 95mm ² , 2x OKC	418620887	15	
6	Return Cable 95mm ² , 1x OKC	504540880	7	
	Return Cable 95mm ² , 1x OKC	504540881	10	
	Return Cable 95mm ² , 1x OKC	504540882	15	
7	CAN bus	3HEA802203-004	2.5	
8	Cable control panel manual jog	3HEA802217-003	15	
9	Cable operator panel		15	
11	Cable Light Beam	3HAC030122-001	15	
13	Cable gate switch	3HEA800782-001	15	
14	Cable PB Complete	3HEA800781-001	7	
	Cable PB Complete	3HEA800781-002	10	
	Cable PB Complete	3HEA800781-003	15	

4.2 Internal connectors

4.2.1 Spare parts, connectors in manipulator

Connectors in manipulator



xx100000281

1	Current collector cable
2	Cable harness on page 70
3	Cable limit switch on page 74
4	Cable slipping (option) on page 75

Continues on next page

4 Electrical spare parts

4.2.1 Spare parts, connectors in manipulator

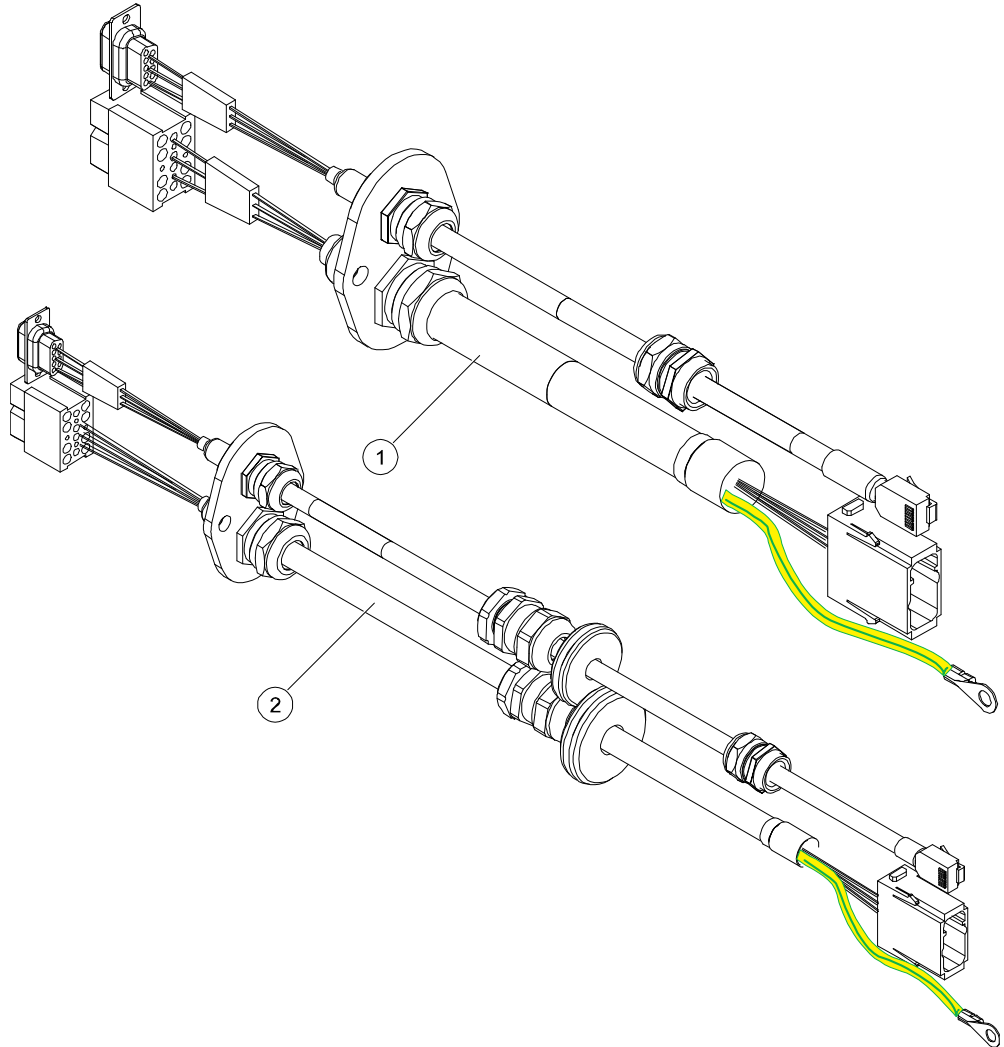
Continued

Cable harness



Note

These cables are valid with SMB box 3HAC046493-001 and 3HAC046492-001, see [Spare part list SMB box 3HAC046493-001 on page 77](#).



xx100000279

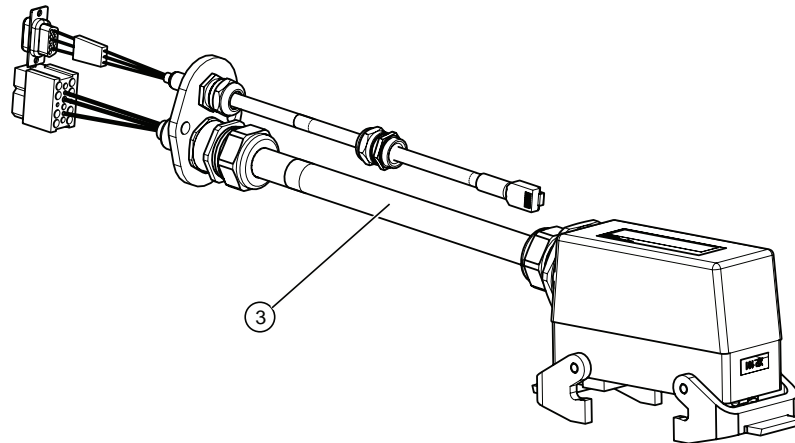
Pos.	Spare part	Description	Note
1	3HAC035219-001	Cable harness MTD, Complete	Length=0.8 m
1	3HAC035219-002	Cable harness MTD, Complete	Length=1.1 m
1	3HAC035219-003	Cable harness MTD, Complete	Length=2.2 m
1	3HAC035219-004	Cable harness MTD, Complete	Length=3.7 m
2	3HAC035399-001	Cable set int.IRBP (IRBP A/B/D only)	Length=3.1 m
2	3HAC035399-002	Cable set int.IRBP (IRBP A/B/D only)	Length=4.3 m
2	3HAC035399-003	Cable set int.IRBP (IRBP A/B/D only)	Length=5.3 m

Continues on next page

4 Electrical spare parts

4.2.1 Spare parts, connectors in manipulator

Continued



xx170000381

Pos.	Spare part	Description	Note
3	3HAC035347-001	Cable harness motor/resolver (IRBP L only)	Length=7 m
	3HAC035347-002	Cable harness motor/resolver (IRBP L only)	Length=10 m
	3HAC035347-003	Cable harness motor/resolver (IRBP L only)	Length=15 m
	3HAC035347-006	Cable harness motor/resolver (IRBP L only)	Length=22 m
	3HAC035347-007	Cable harness motor/resolver (IRBP L only)	Length=30 m

Continues on next page

4 Electrical spare parts

4.2.1 Spare parts, connectors in manipulator

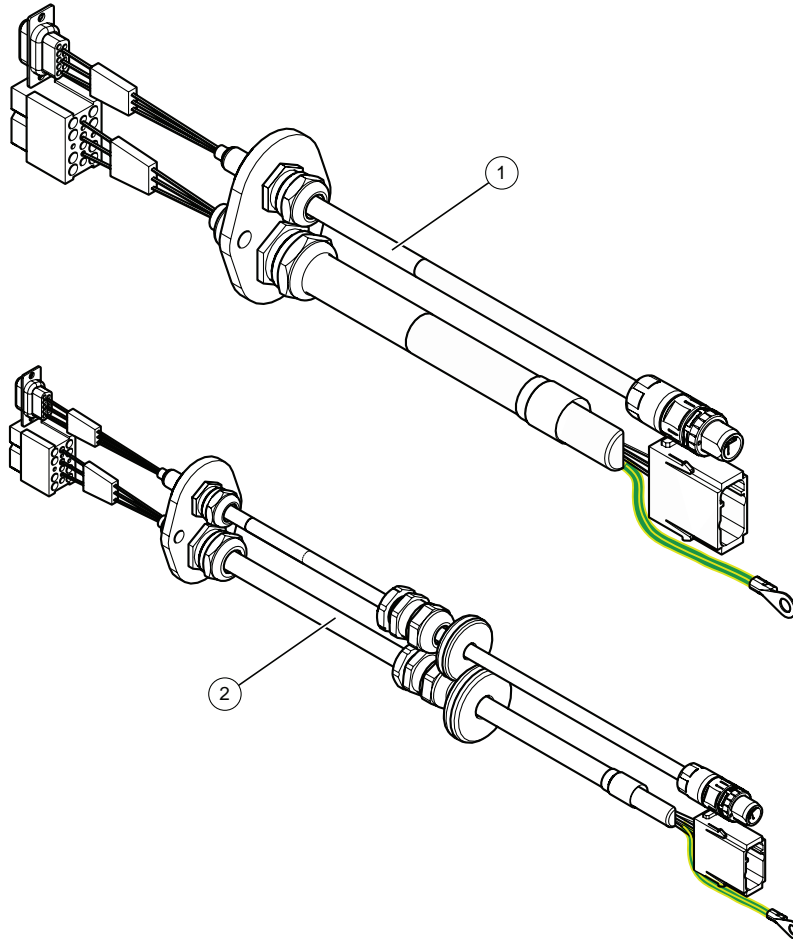
Continued

Cable harness



Note

These cables are valid with SMB box 3HAC061824-003 and 3HAC061824-004, see [Spare part list SMB box 3HAC061824-00X on page 78](#).



xx170000352

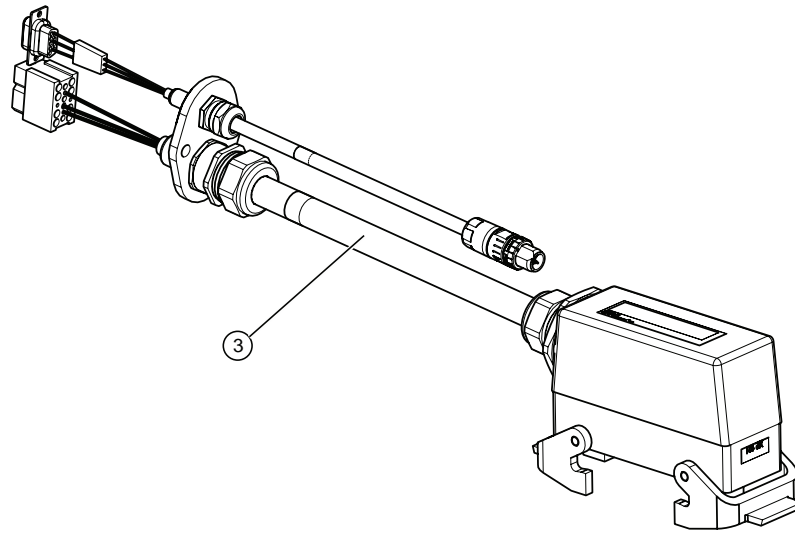
Pos.	Spare part	Description	Note
1	3HAC060343-002	Cable harness MTD, Complete	Length=1.1 m
1	3HAC060343-003	Cable harness MTD, Complete	Length=2.2 m
1	3HAC060343-004	Cable harness MTD, Complete	Length=3.7 m
2	3HAC061318-001	Cable set int.IRBP (IRBP A/B/C only)	Length=3.1 m
2	3HAC061318-002	Cable set int.IRBP (IRBP A/B/C only)	Length=4.3 m
2	3HAC061318-003	Cable set int.IRBP (IRBP A/B/C only)	Length=5.3 m

Continues on next page

4 Electrical spare parts

4.2.1 Spare parts, connectors in manipulator

Continued



xx170000382

Pos.	Spare part	Description	Note
3	3HAC061402-001	Cable harness motor/resolver (IRBP L only)	Length=7 m
	3HAC061402-002	Cable harness motor/resolver (IRBP L only)	Length=10 m
	3HAC061402-003	Cable harness motor/resolver (IRBP L only)	Length=15 m
	3HAC061402-004	Cable harness motor/resolver (IRBP L only)	Length=22 m
	3HAC061402-005	Cable harness motor/resolver (IRBP L only)	Length=30 m

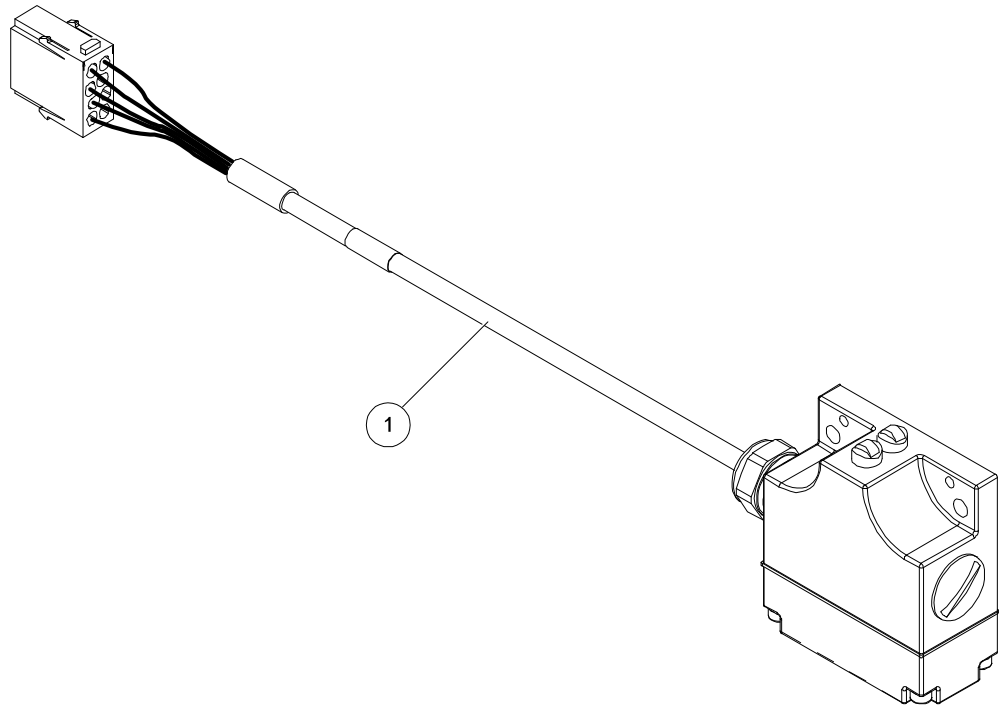
Continues on next page

4 Electrical spare parts

4.2.1 Spare parts, connectors in manipulator

Continued

Cable limit switch

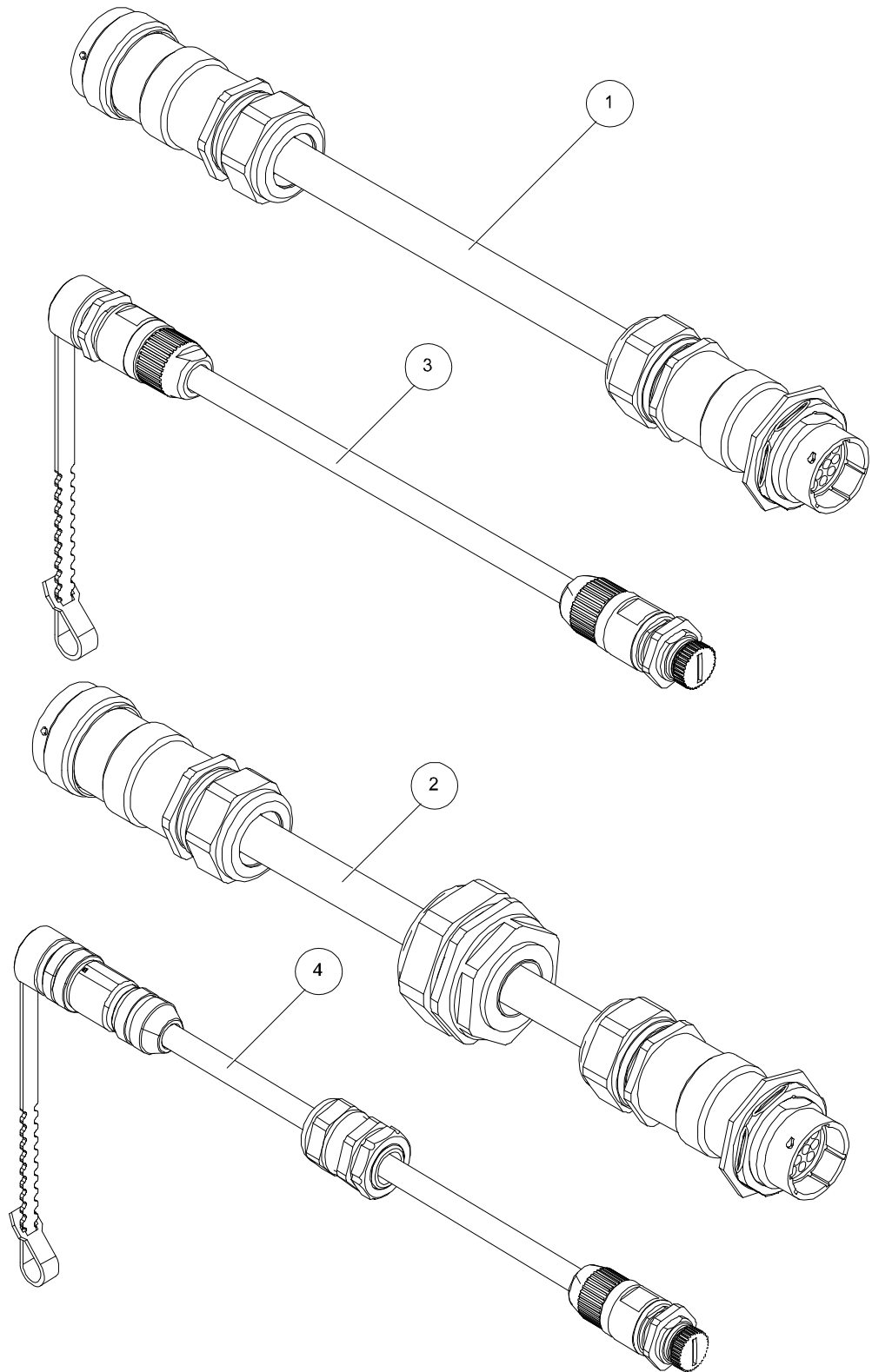


xx100000278

Pos.	Spare part	Description	Note
1	3HAC035494-001	Cable Limit Switch Complete	L=1.0 m

Continues on next page

Cable sliping (option)



xx100000290

Pos.	Spare part	Description	Note
1	3HAC035339-001	Cable sliping WCP1/WCP2	L=0.8m

Continues on next page

4 Electrical spare parts

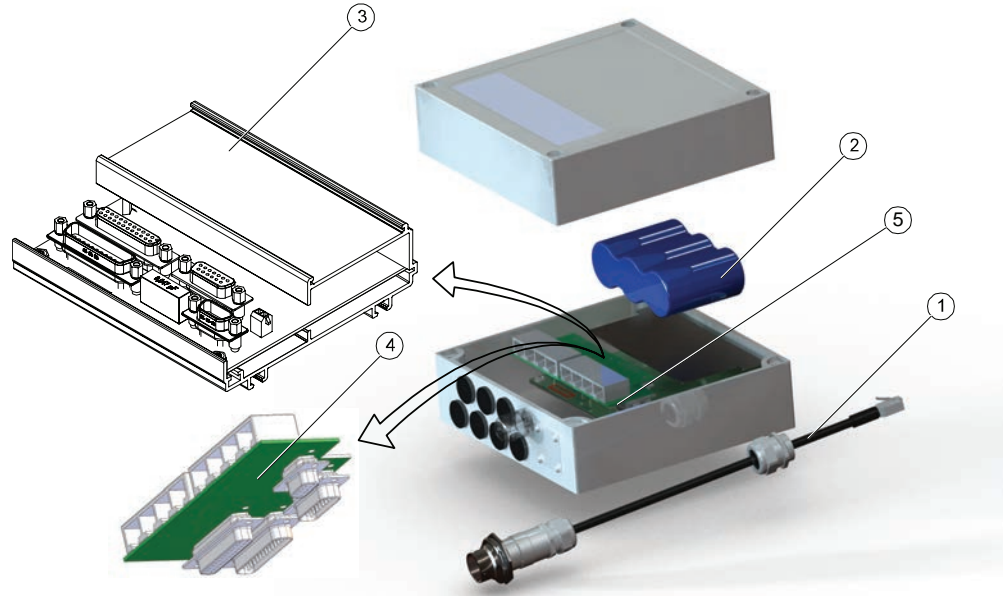
4.2.1 Spare parts, connectors in manipulator

Continued

Pos.	Spare part	Description	Note
1	3HAC035339-002	Cable slipring WCP1/WCP2	L=2.6m
1	3HAC035339-003	Cable slipring WCP1/WCP2	L=3.2m
1	3HAC035339-004	Cable slipring WCP1/WCP2	L=3.7m
2	3HAC035708-001	Cable WCP3/WCP4	L=2m
2	3HAC035708-002	Cable WCP3/WCP4	L=3.7m
3	3HAC035370-001	Cable WCS1/WCS2	L=0.8m
3	3HAC035370-002	Cable WCS1/WCS2	L=2.6m
3	3HAC035370-003	Cable WCS1/WCS2	L=3.2m
3	3HAC035370-004	Cable WCS1/WCS2	L=3.7m
4	3HAC035881-001	Cable slipring WCS3/WCS4	L=2m
4	3HAC035881-002	Cable slipring WCS3/WCS4	L=3.7m
	3HAC035432-001	Connector set CP/CS	

4.2.2 Spare part, SMB box

Spare part list SMB box 3HAC046493-001



xx100000248

Pos.	Sparepart	Description	Note
	3HAC046493-001	SMB box complete, For IRBP A/B/C/D/K/R	Not as spare part
	3HAC046492-001	SMB box complete For IRBP L	Not as spare part
1	3HAC035397-001	Cable SMB Internal, IRBP	Not valid for variant IRBP L
2	3HAC044075-001	Battery unit	
2	3HAC16831-1	Battery unit	Only with SMB unit DSQC633A
3	3HAC043904-001	SMB unit DSQC63C	
4	3HEA800906-001	Node splitter	
5	3HEA800786-001	Cable SMB, connection in box	Only valid for IRBP L

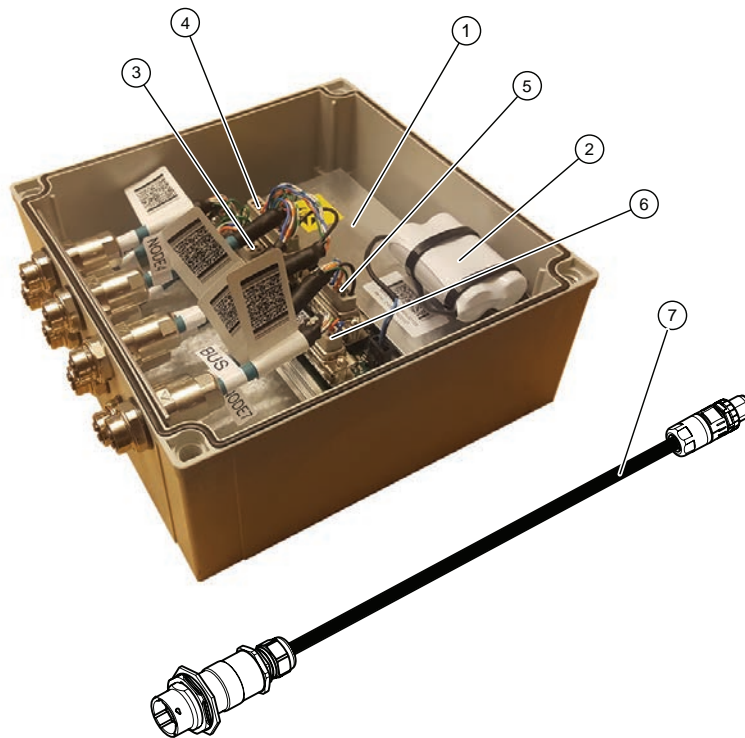
Continues on next page

4 Electrical spare parts

4.2.2 Spare part, SMB box

Continued

Spare part list SMB box 3HAC061824-00X



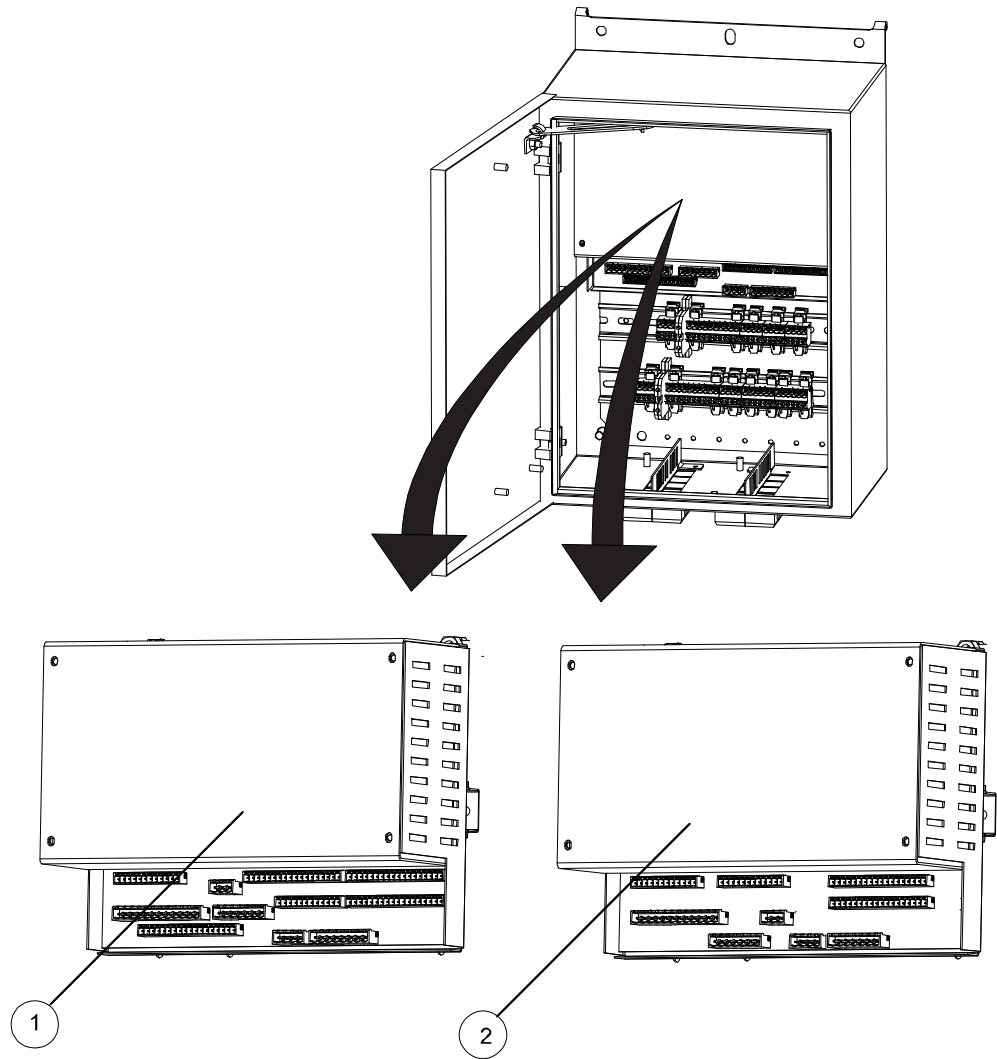
xx170000350

Pos.	Sparepart	Description	Note
	3HAC061824-003	SMB box complete (3 Nodes)	Valid for IRBP L/K/A/R/C
	3HAC061824-004	SMB box complete (6 Nodes)	Valid for IRBP B/D
1	3HAC043904-001	SMB unit DSQC633C	
2	3HAC044075-001	Battery unit	
3	3HAC060837-001	M12 - D-sub adapter harness, Node 1, 2 and 3	
4	3HAC060838-001	M12 - D-sub adapter harness, Node 4, 5 and 6	
5	3HAC060839-001	M12 - D-sub adapter harness, Node 7	Only on request
6	3HAC060840-001	M12 - D-sub adapter harness, Bus	
7	3HAC060342-001	Cable SMB Internal, IRBP	Not valid for variant IRBP L

4.3 Electrical options

4.3.1 SIB V , spare parts

SIB V types



xx100000291

Pos	Spare parts	Description	Note
1	3HEA504996880	SIB V.Type 3	
2	3HEA504994880	SIB V.Type 1	

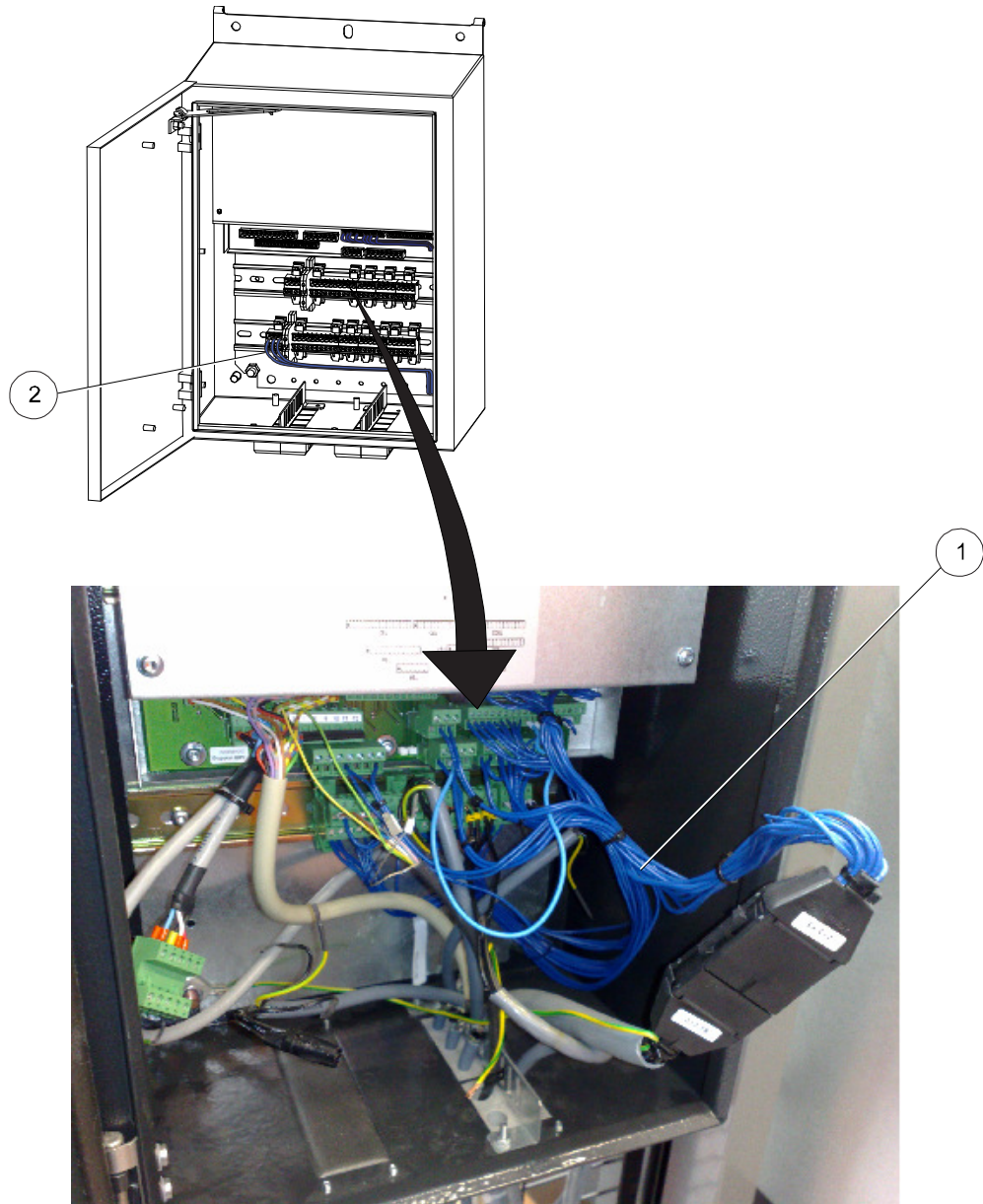
Continues on next page

4 Electrical spare parts

4.3.1 SIB V , spare parts

Continued

SIB harness

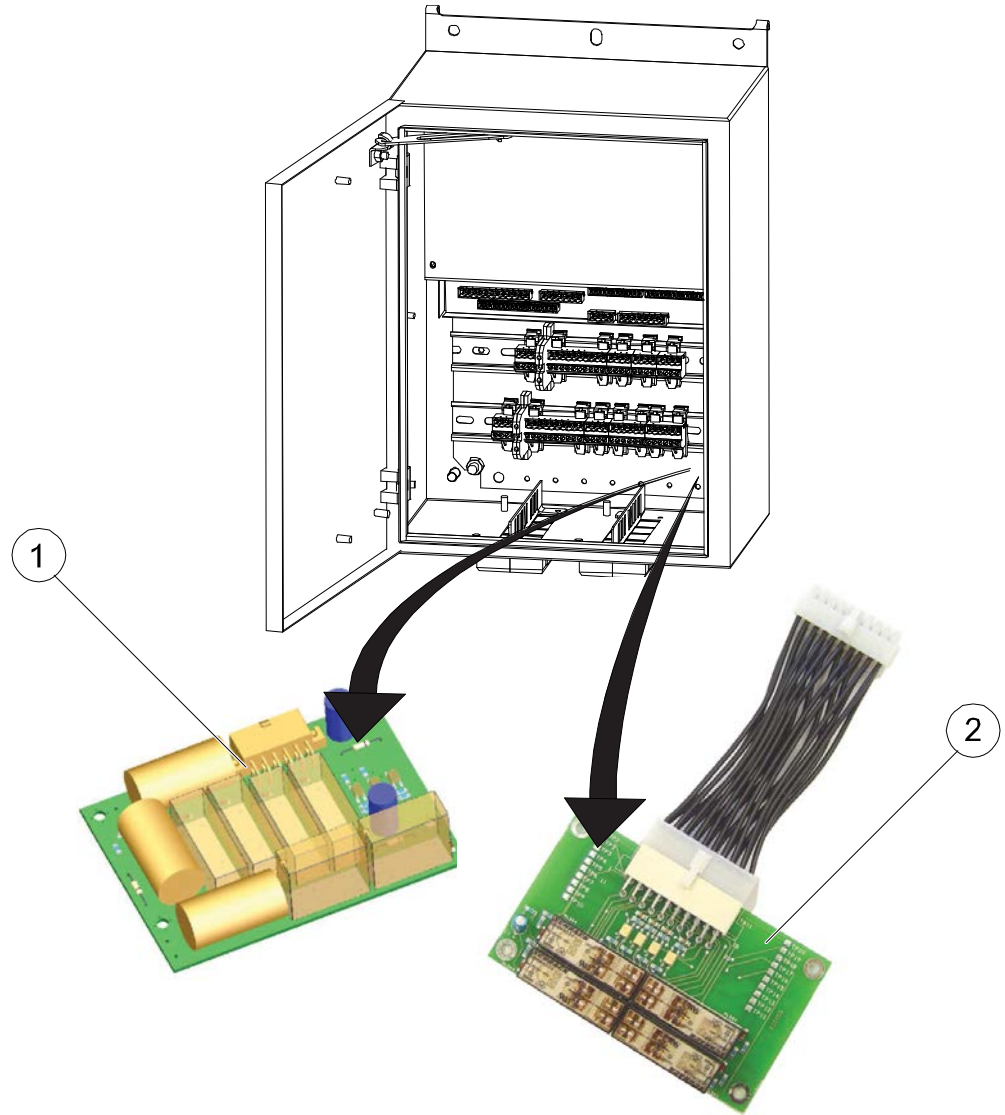


xx100000292

Pos.	Spare part	Description	Note
1	3HEA802196-001	Harness Safety B/C/Ci/D/K/R	
1	3HEA802195-001	Harness Safety A/L/S	
1	3HEA802197-001	Harness SIB A/L/S	
2	3HAC037833-001	Harness EPS	

4.3.2 Spare parts, SIB V option board 1 and 2

Spare part list



xx100000260

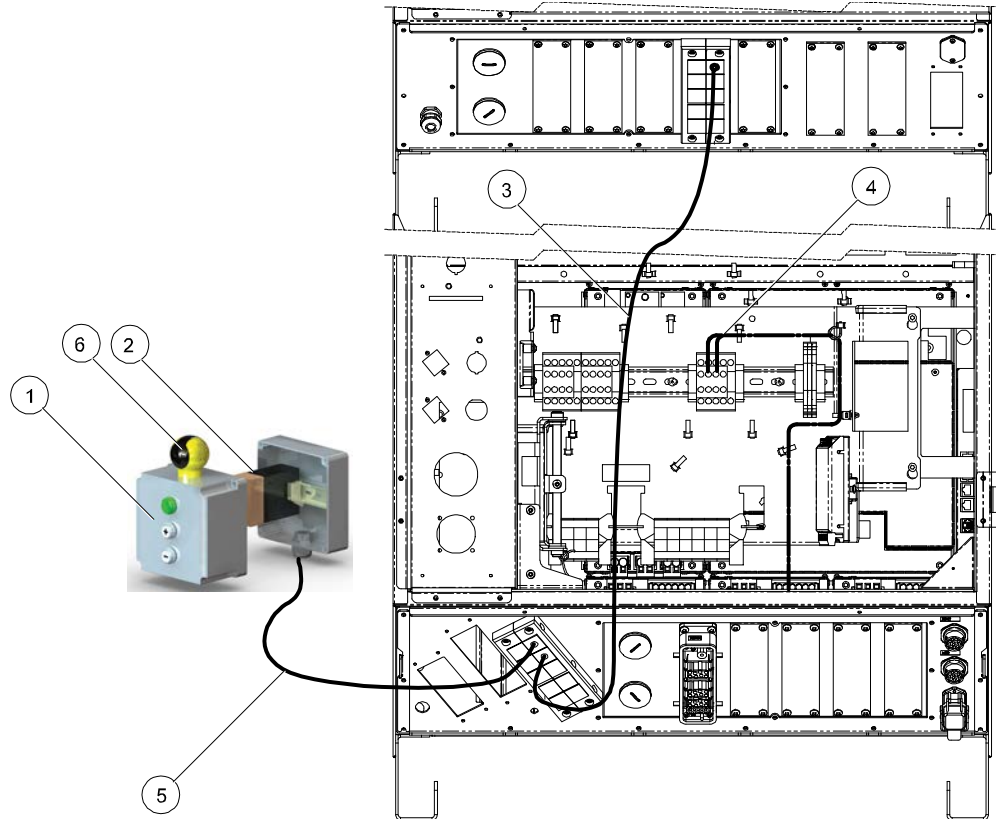
Pos	Spare part	Description	Note
1	3HEA800464-001	SIB V Option bard 2	PreReset
2	504997880	SIB V Option bard 1	

4 Electrical spare parts

4.3.3 Spare parts, manual jog L/K/R

4.3.3 Spare parts, manual jog L/K/R

Spare parts

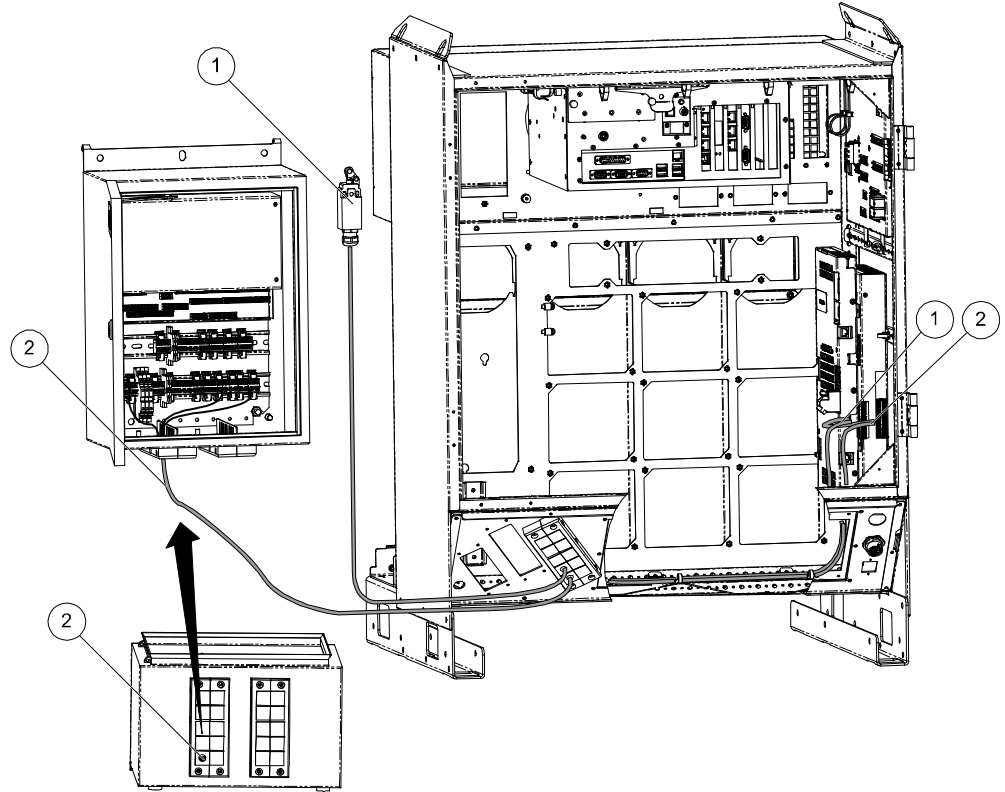


xx100000277

Pos	Spare parts	Description	Note
1	3HAC028129-001	Control Panel Manual Jog	
2	552009004	Safety Relay RT6 24V DC	
3	3HAC029925-001	Cable Manual Jog K/R,DC	
4	3HEA802189-001	Harness Manual Jog IRBP K/R	
	3HAC037498-001	Harness Manual Jog IRBP 2xL	
5	3HEA802217-003	Cable Manual Jog 15m	
6	3HEA802497-001	Safety Ball 2NO	

4.3.4 Spare parts station sync

Cable sync switch



xx100000294

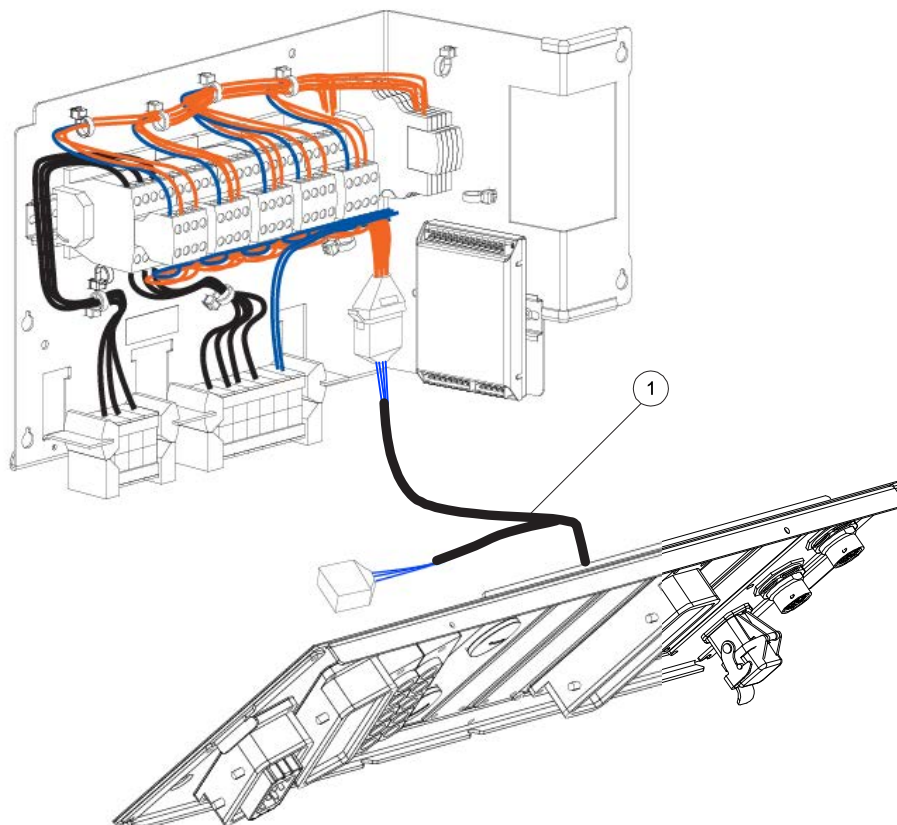
Pos.	Spare part	Description	Note
1	3HAC037826-001	Cable Sync switch	
2	3HAC037550-001	Cable EPS	

4 Electrical spare parts

4.3.5 Spare parts, active relay supervision

4.3.5 Spare parts, active relay supervision

Harness MI Interface



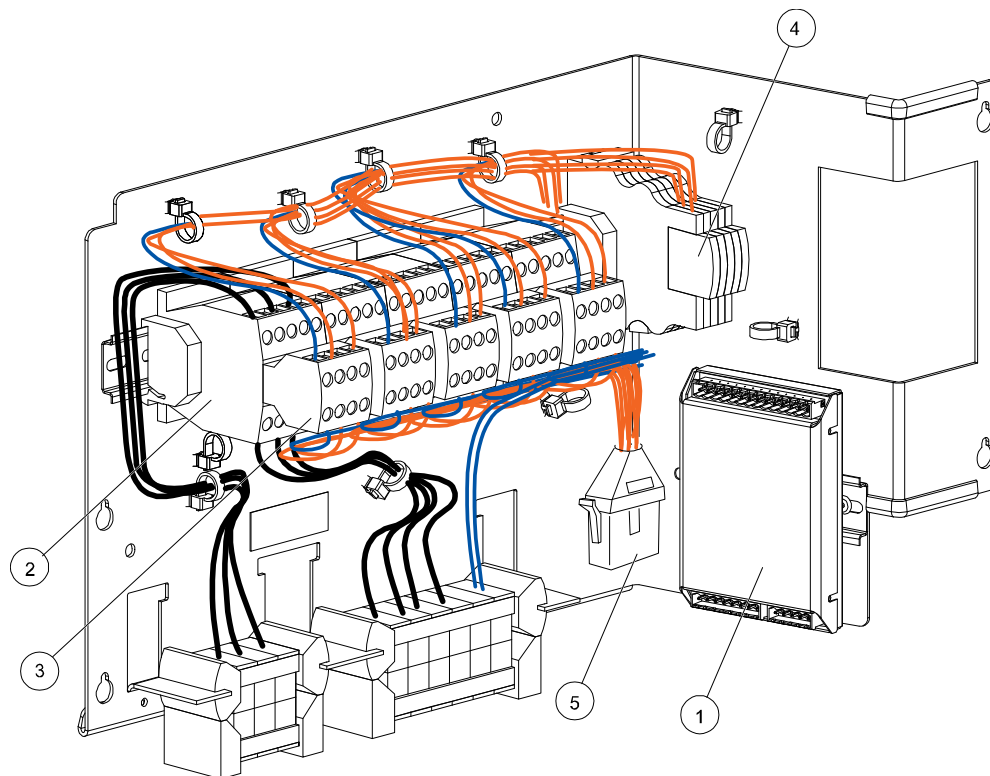
xx100000296

Item	Component	Description	Qty	Material, type, etc.	Dimension
1	3HAC028483-001	Harness MI Interface	1		0.45 m

5 Controller

5.1 Spare parts, controller IRBP

Spare parts, axis selector



xx100000230

Pos	Spare part	Description	Note
1	3HEA800439-002	Drive Module I/O RS485	
2	3HEA800447-001	Contactor DILM12-10	(24VDC)
3	3HEA800447-003	Auxiliary Contact 1NO/3NC DILA-XHI13	
4	3HEA800448-001	Relay D2.5/5-R121L	(24VDC LED) (1 pcs)
5	3HAC035611-001	Harness IRBP C	
5	3HAC035612-001	Harness IRBP L	
5	3HAC035613-001	Harness IRBP K/R	
5	3HAC035614-001	Harness IRBP A	
5	3HAC035615-001	Harness IRBP B/D	

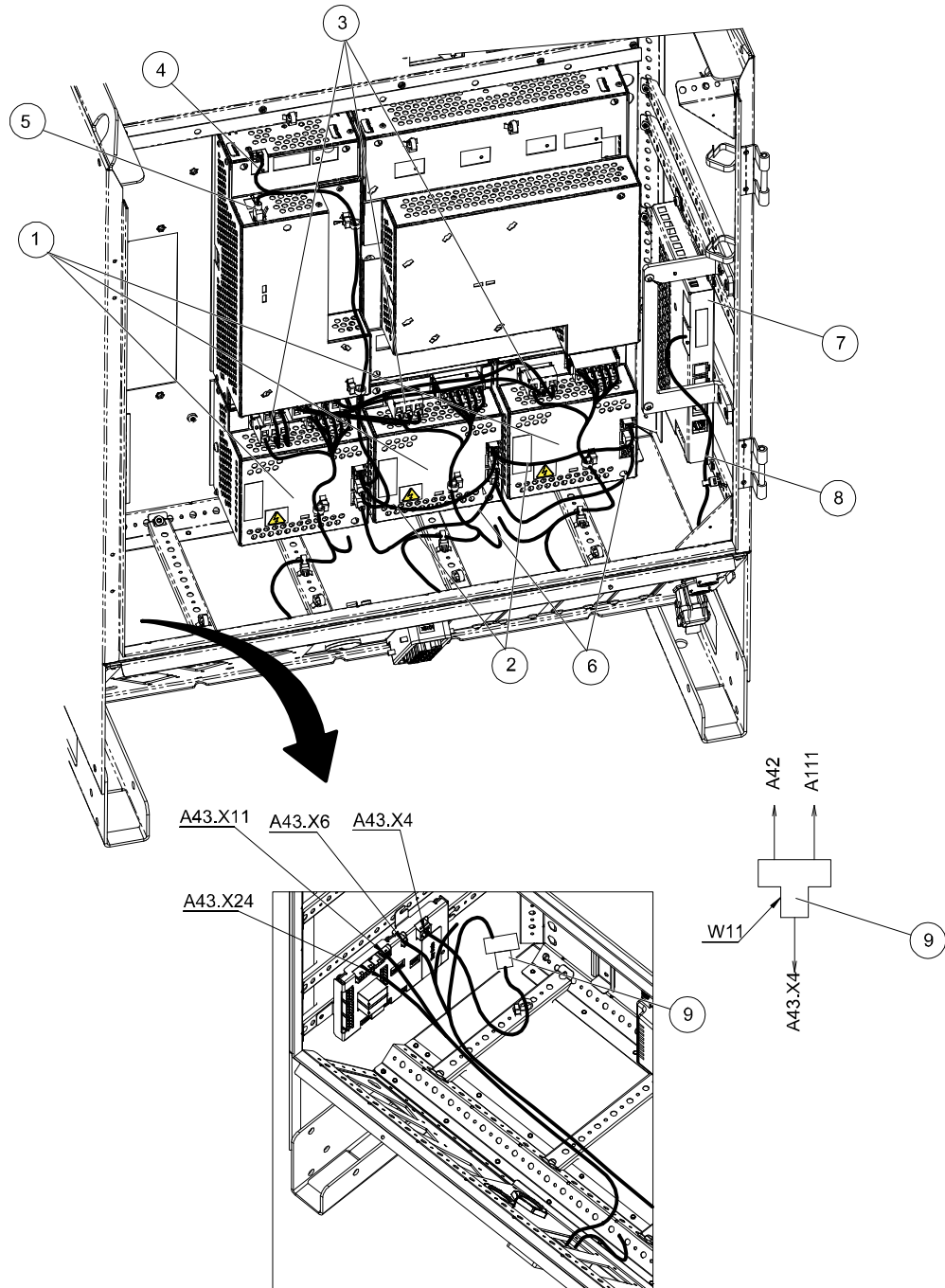
Continues on next page

5 Controller

5.1 Spare parts, controller IRBP

Continued

Additional drives



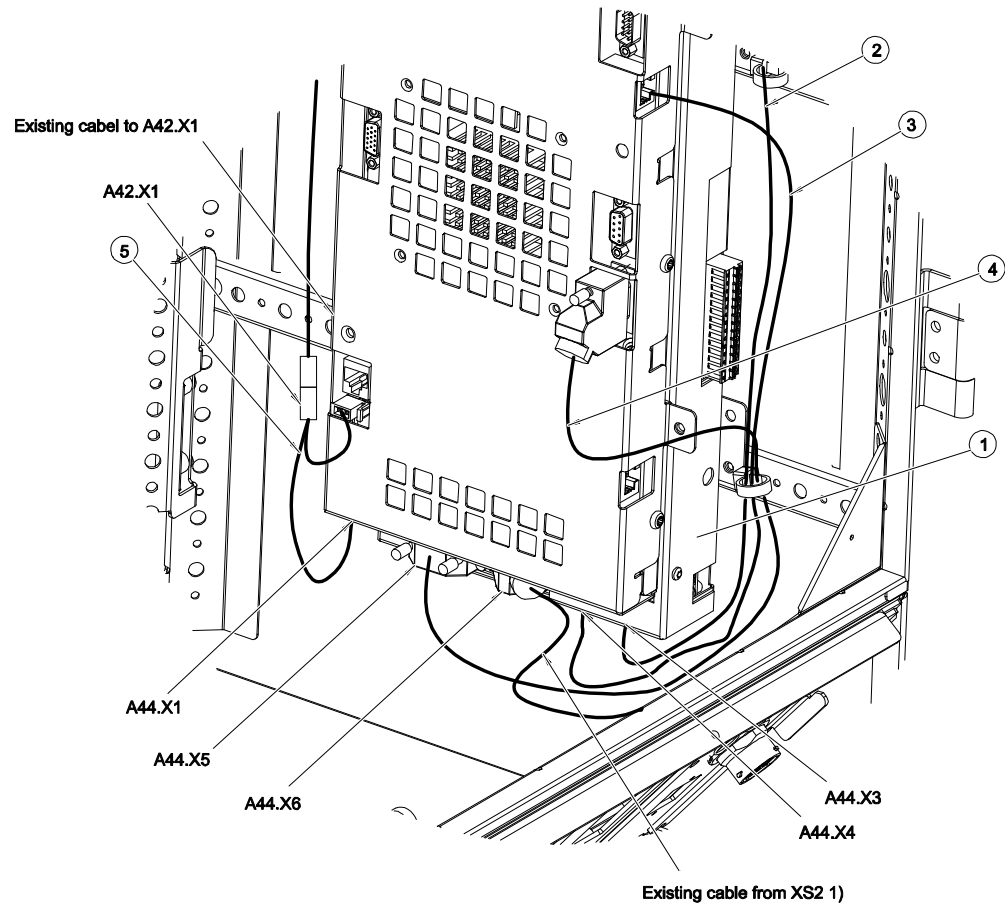
xx100000249

Pos	Spare part	Description	Note
1	3HAC030923-001	DSQC664 HV ADU Drive unit	
2	3HAC032601-001	Harness-ADU 24V	
3	3HAC032612-001	Harness-MDU/ADU DC-bus	
4	3HAC032595-001	Harness-MDU/ADU 24V	
5	3HAC024254-007	Ethernet cable straight connection	

Continues on next page

Pos	Spare part	Description	Note
6	3HAC024254-008	Ethernet cable straight connection	
7	3HAC026271-003	ELAN EPS unit,DSQC646	
8	3HAC020677-001	Harness-Axis board/XS41	
9	3HEA802183-001	3-way RJ45 8P/8C Shielded MPK 402	

Spare parts, ELAN



xx100000276

Pos	Spare parts	Description	Note
1	3HAC026271-003	ELAN EPS unit, DSQC646	
2	3HAC026292-001	Harness-Ethernet ELAN/MC	
3	3HAC026218-001	Harness-Ethernet cross connection	
4	3HAC026193-001	Harness-SMB AXC/ELAN	
5	3HAC026413-001	Harness-Adapter 24V ELAN/AXC	

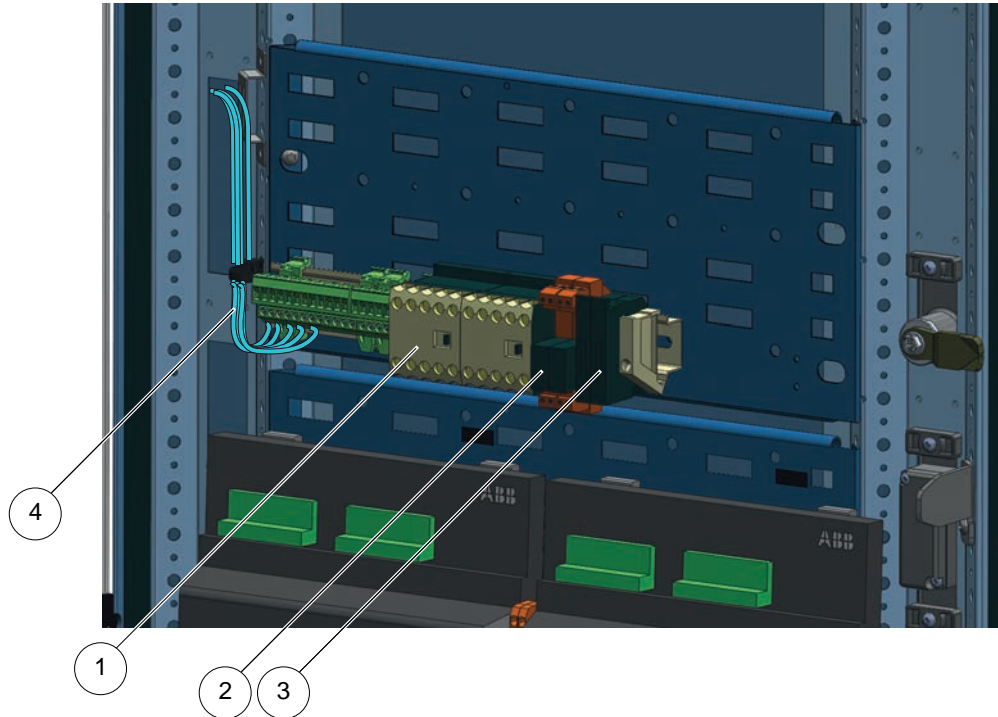
Continues on next page

5 Controller

5.1 Spare parts, controller IRBP

Continued

Spare parts external emergency stop

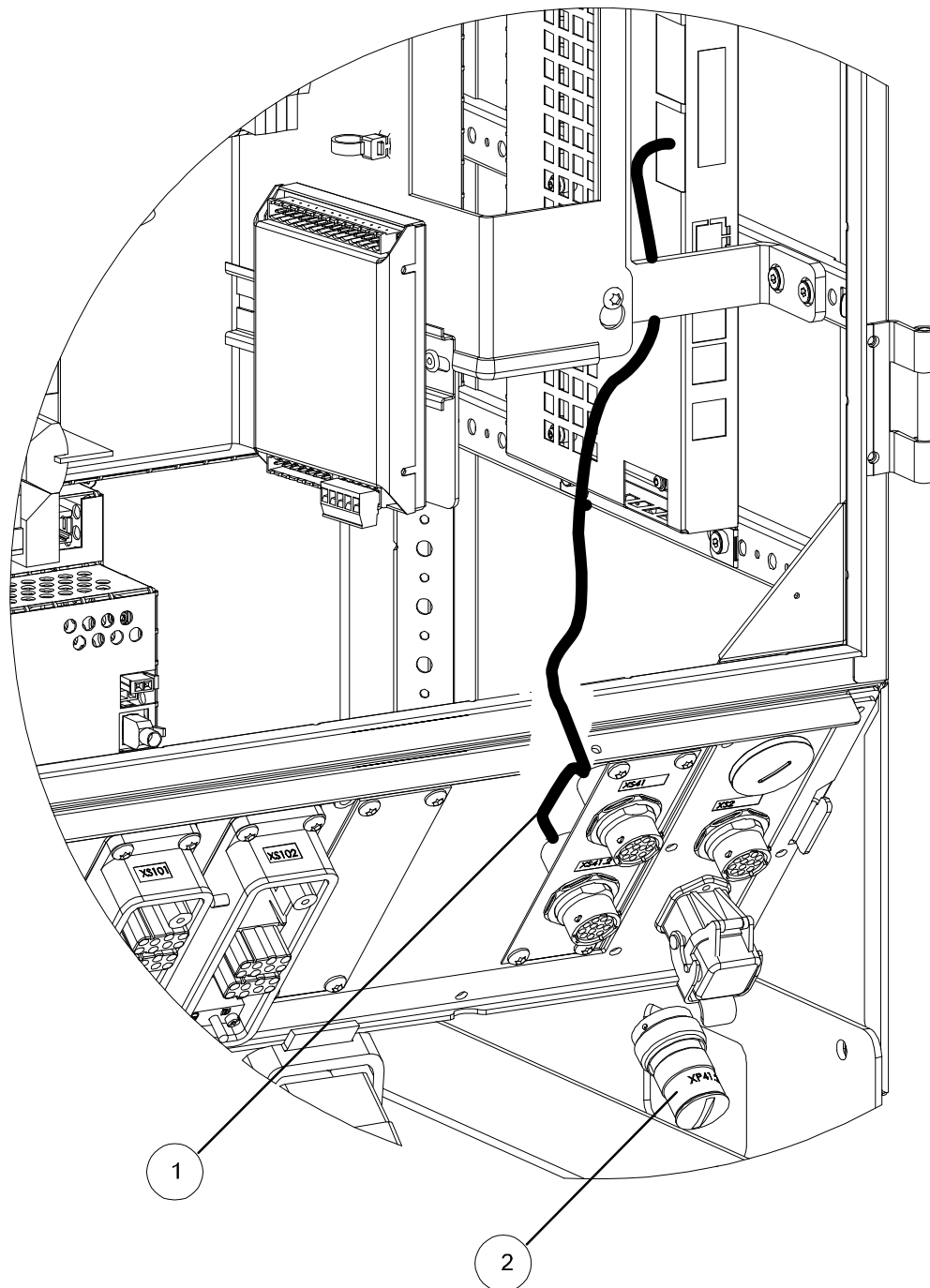


xx100000293

Pos	Spare part	Description	Note
1	193825029	Relay contactor	DIL ER-31-G
2	193540004	Relay	ECO30-24V
3	193541001	Connection Block	TS35
4	3HEA800519-001	Harness Opt. Ext. Emergency Stop	

Continues on next page

Spare parts cable MS XS41/XS41.2



xx100000284

Pos	Spare parts	Description	Note
1	3HEA800461-001	Cable MS XS41/XS41.2	
2	3HAC028434-001	Jumper Connector XP41.2	1xA/L

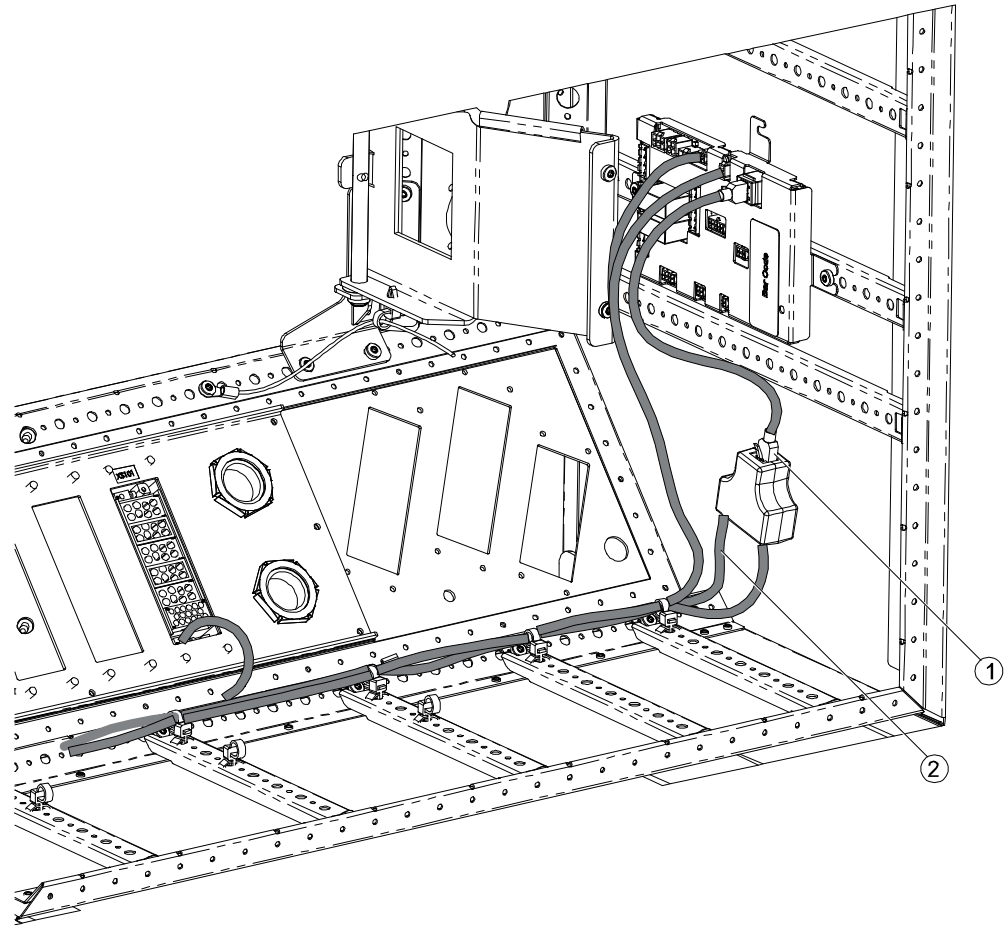
Continues on next page

5 Controller

5.1 Spare parts, controller IRBP

Continued

Cables axis selector

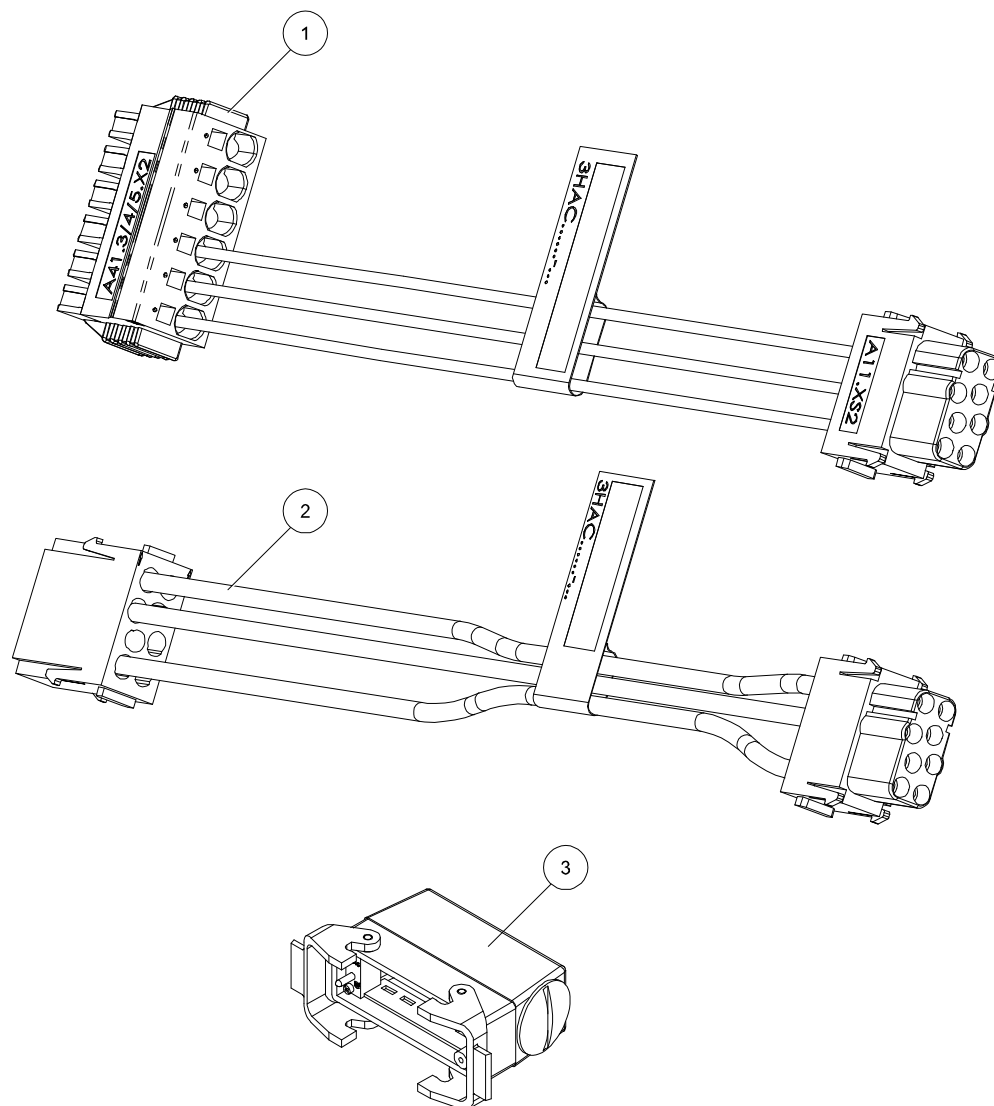


xx100000285

Pos	Spare parts	Description	Note
1	3HEA802215-001	Cable Patch	L= 0.1 m
2	3HEA802201-001	Cable I/O RS485	

Continues on next page

Harness controller



xx100000286

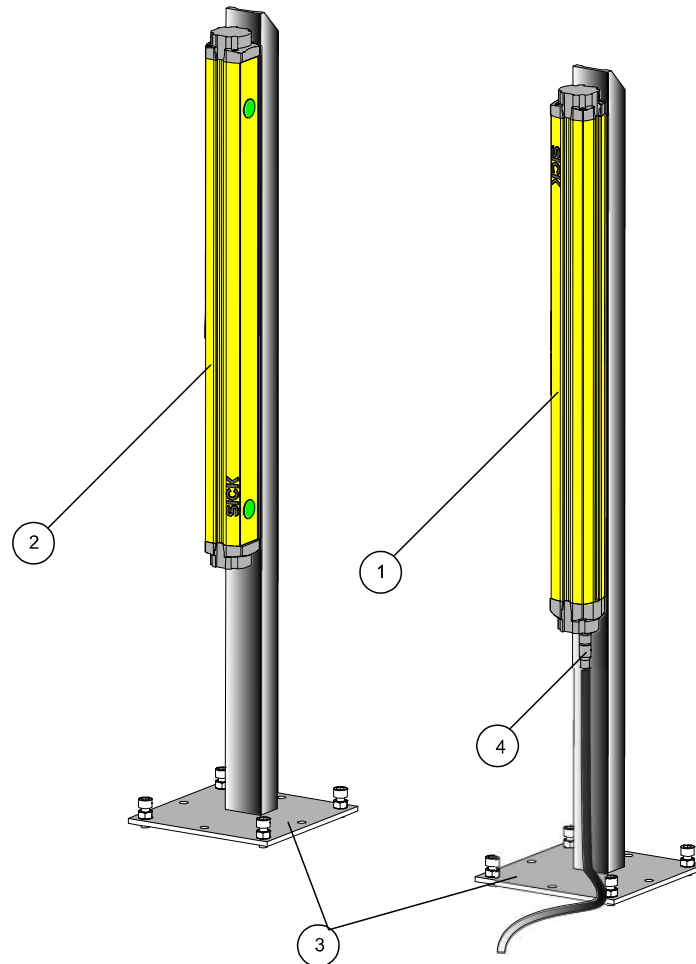
Pos	Spare part	Description	Note
1	3HAC035806-001	Harness Drive unit IRBP	L= 0.55m
2	3HAC035551-001	Harness Motor IRBP A/B/C/Ci/D/K/R	L= 0.36m
2	3HEA800450-001	Harness Motor IRBP L	L= 0.36m
3	3HAC036197-001	Cover Hood	

This page is intentionally left blank

6 Safety equipment

6.1 Spare parts, light beam

Spare parts, light beam



xx100000247

Pos	Spare part		
1	3HAC030116-001	Sender/Receiver, Light Beam	
2	3HAC030117-001	Mirror, Light Beam	
3	3HAC030120-001	Post, Light Beam	
4	3HAC030122-001	Cable, Light Beam	L=15m



ABB AB

Robotics & Discrete Automation

S-721 68 VÄSTERÅS, Sweden

Telephone +46 (0) 21 344 400

ABB AS

Robotics & Discrete Automation

Nordlysvegen 7, N-4340 BRYNE, Norway

Box 265, N-4349 BRYNE, Norway

Telephone: +47 22 87 2000

ABB Engineering (Shanghai) Ltd.

Robotics & Discrete Automation

No. 4528 Kangxin Highway

PuDong New District

SHANGHAI 201319, China

Telephone: +86 21 6105 6666

ABB Inc.

Robotics & Discrete Automation

1250 Brown Road

Auburn Hills, MI 48326

USA

Telephone: +1 248 391 9000

abb.com/robotics